



Local climate emergency

Brief insights on challenges and solutions

New Economics Foundation



Climate change is now mainstream and a rapidly evolving political issue

Over 450 UK councils have declared a Climate (/and Ecological) Emergency, but many lack the resources or knowledge to meet their ambitious pledges

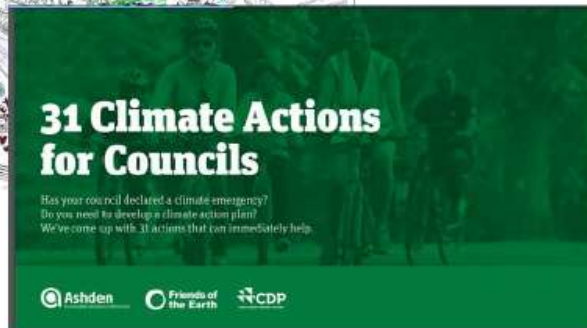
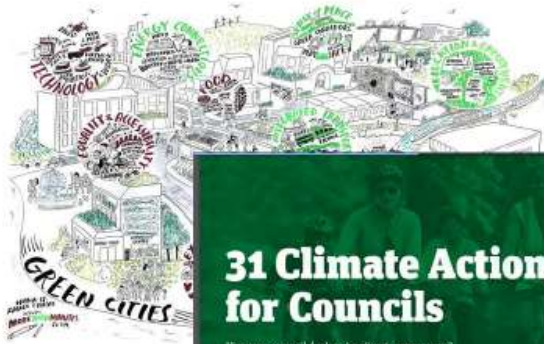
The government is serious at a green recovery from Covid but deems Covid-19 as a setback to climate action. In part owing to large fiscal deficit

COP26 remains a key milestone for government, outside of the EU and No.10 and Whitehall are keen on showing off the country's climate credentials and value image of a climate leader

Some key policy decisions pending – energy white paper, national infra strategy, transport decarb plan, heat strategy etc.

Current focus of govt., national and local, is Covid-19. Both from a rescue and recovery point of view.

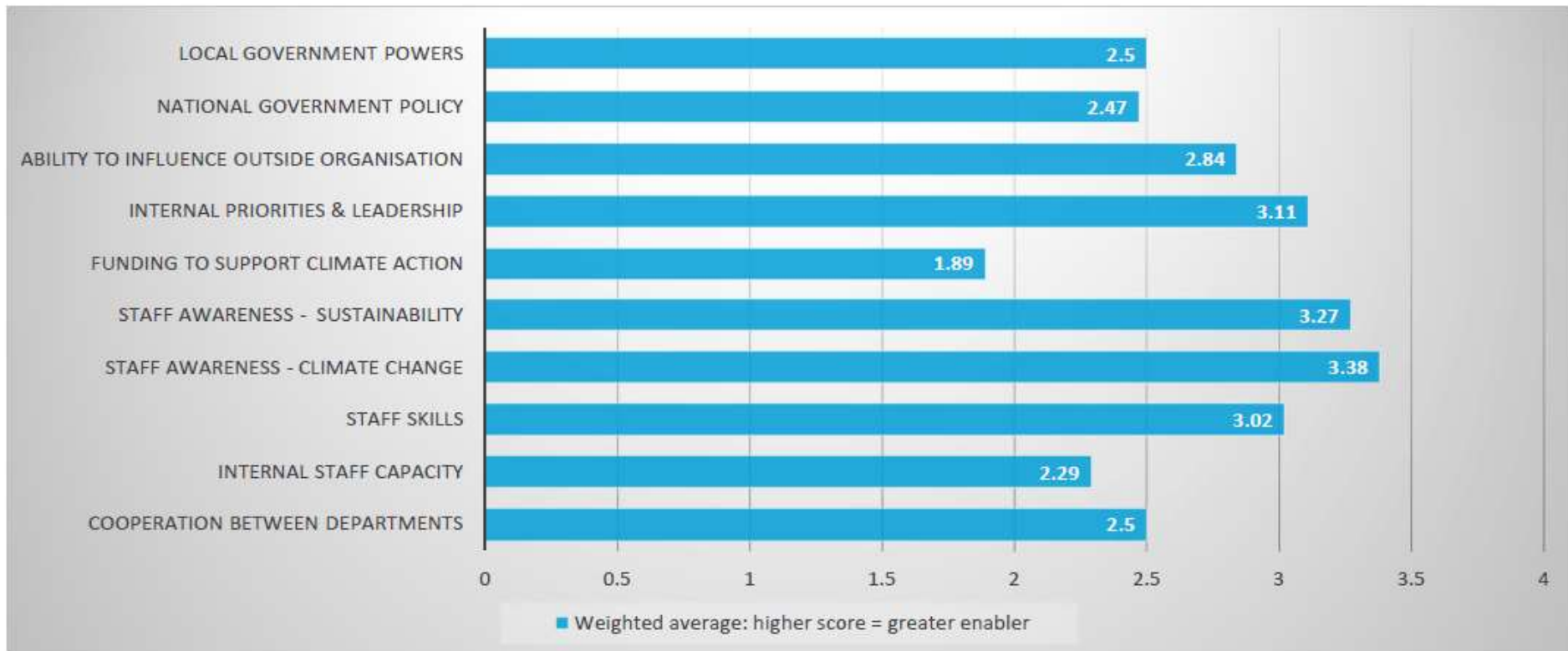
Since the declarations, several civil society and business initiatives in response



**PLACE-BASED
CLIMATE ACTION
NETWORK**



They have identified these barriers and enablers for local authorities



And the needs for companies and organisations to engage with the emergency?

What needs to change?	Survey weighted average: higher rating = greater priority
More funding or investment in solutions (financial or in kind)	4.47
A more collaborative and strategic approach	4.38
Making climate action central to city or locality decision making	4.38
Greater access to tools and support for this work	3.66
More integrated professional networks	3.57
National or international leadership	4.38
A stronger shared vision of what sustainability means and will look like	4.21

Local authorities have identified a similar need

Type of help	Weighted average in order of priority
Funding to increase capacity	4.32
Practical action planning tools	3.95
Community engagement support	3.82
Strategic framework or planning support	3.8
Greater capacity for outreach	3.78
Technical support – measurement and tracking data	3.69
Training and support to individuals	3.48
Training - with groups	3.41
Communications support	3.36
Face to face networking events (with other localities)	3.2
International case studies of successful approaches	3.16
Online support	3
Online networking - with peers internationally	2.75

LA's are adopting different approaches to addressing this issue

- **Independent groups**, such as the [Manchester Climate Change Agency](#), act as independent voices on climate change in the city, they bring together a diverse range of organisations and actors from across the city in order to inspire and inform place-based climate action.
- **Expert-led groups**, such as [The London Climate Change Partnership](#) (LCCP) are often created by local or national governments in order to advise decision-making surrounding climate change within the public-sector. Their work is therefore closely tied to these bodies, both in terms of funding and research
- **Networks of third sector organisations** operate within many UK cities (e.g. [Derby Climate Coalition](#)). Bringing together a diverse range of environmental groups, these networks help to facilitate action at a local, regional and national scale, often raising funds through donations and fundraising events.
- **Climate governance beyond the city**, such as [Bright Green Business](#), utilise existing networks to maximise engagement. This archetype acknowledges the work of regional and national climate partnerships and their relevance to place-based climate action.

Croyden climate commission

- Set up after the Croyden climate citizens assembly in 2019
- Currently chaired by the New Economics Foundation
- A practical structure of expert + public engagement for developing recommendations
- Holding the council to account on keeping track to net zero by 2030
- Supporting the council in ways to implement the recommendations to whatever extent feasible
- Engaging with other commissions across the country for lessons, best practices and joint advocacy of national government

We've come across these most common solutions to the climate and ecological crisis that LA's are pursuing

- Invest in low-carbon and climate-resilient infrastructure
- Support reskilling, retraining and research for a net-zero well-adapted economy
- Upgrade our homes to ensure they are fit for the future
- Make it easy for people to walk, cycle, and work remotely
- Accelerate tree planting, peatland restoration, green spaces and other green infrastructure
- Innovation at the local level through business models and partnerships

These are some key steps from national government that many have identified

- Shared Prosperity Fund is designed to support zero and low carbon economic development
- Enable flexibility in the business rates system to support decarbonisation
- Ensure local authorities have adequate skilled staff and access to training for elected members to catalyse local zero and low carbon economic development
- Skills funding through the national skills fund for nurturing green jobs
- Heavy emphasis on place based transport decarb strategies through the upcoming national transport decarb plan
- Support local authorities to coordinate the development and delivery of integrated and strategic Local Nature Recovery Strategies and Local Natural Capital Plans

Some overarching questions to consider

- Implications of Covid on the medium to long term nature of our economy is far from clear
- Big policy questions await in terms of future tax, fiscal and monetary policy and what constraints the govt. faces
- Opportunities for devolution in the upcoming white paper and its role in climate governance
- The green jobs opportunity is immense but the pathway to getting there is far from clear
- Questions of natural capital, public money for public goods etc. and associated projects are still in a very nascent stage and LA's will have a strong role to play in that context.
- Lessons from managing Covid-19 to climate change, from public engagement to policy coordination



Thank you

Questions?

Chaitanya.kumar@neweconomics.org

