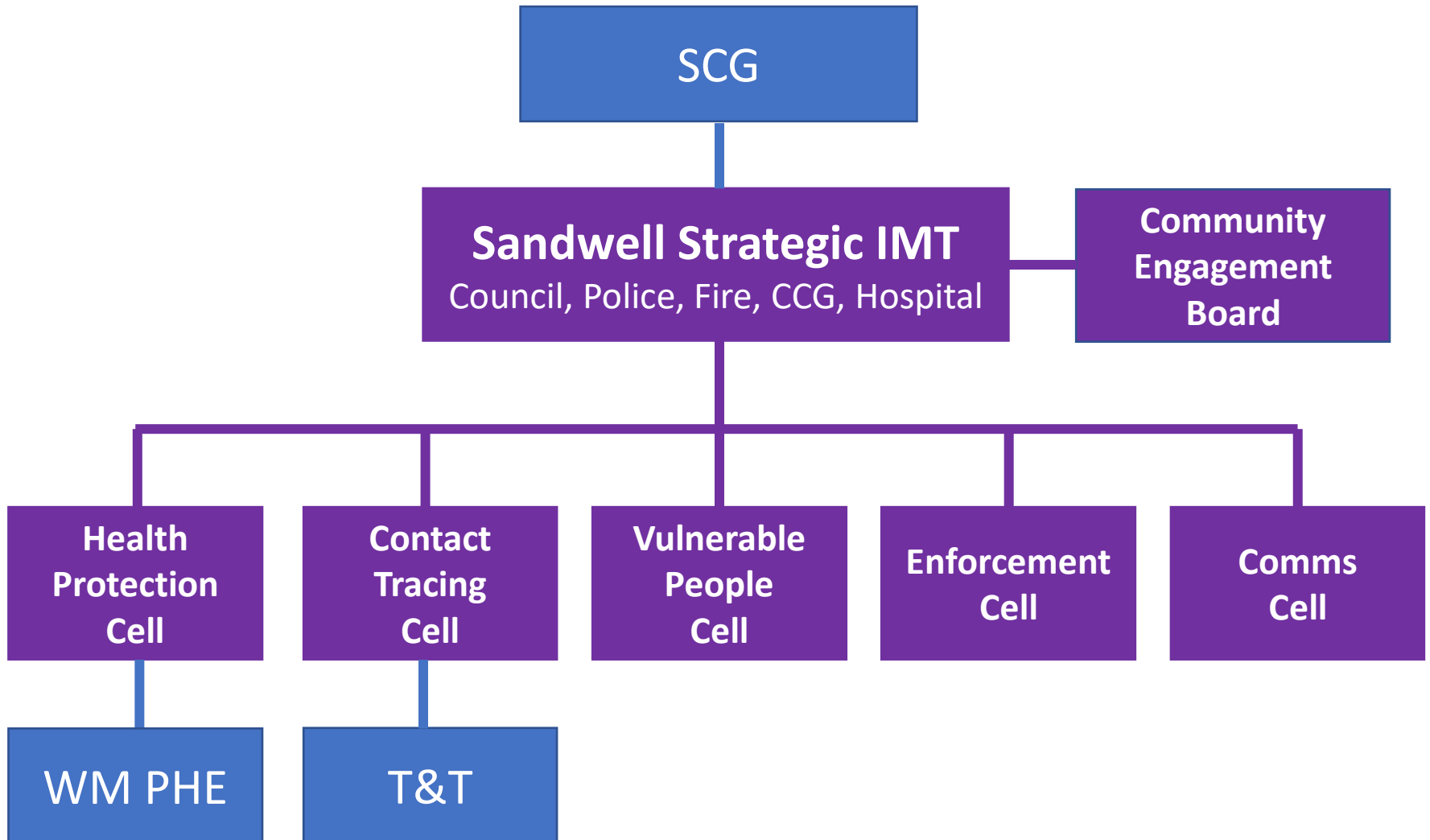


Sandwell COVID-19 Governance Structure



Health Protection Cell

7 day a week service – responds to cases and outbreaks

20 core staff – surge capacity up to 30

Three sub-cells:

- **Schools (in collaboration with Education)**
- **Care Homes (in collaboration with ASC)**
- **Workplaces (in collaboration with EHOs)**

Dedicated outbreak swabbing team – 150 tests a day

Contact Tracing Cell

7 day a week service

**25 core staff – surge capacity up to 50
(training delivered across the summer)**

CT supervised by PH specialists and backed by data analysts and database manager

Face to face CT provided by Council staff (NEW)

Contact Tracing Process

Two types of calls:

- 'Welfare Calls' – Offer of support plus brief CT**
- 'Hard to Reach' – Offer of support plus detailed CT**

Integrated with NHS T&T – using CTAS. Contacts fed back into CTAS for T&T to reach – but we are changing this.

Also integrated with HP Cell – numerous outbreaks spotted early via CT.

Successful reach between 80% and 90% (88% last week).

Contact Tracing Next Steps

Take over the contacting of contacts from Test & Trace

Ask T&T to pass some cases on to us without attempting them first (developing predictive model for this).

Create capacity for the above by prioritising welfare calls to certain groups (non English speakers, factory workers)

Get reach close to 100%