

**The
Sheffield
College**

Further Education leadership: Delivering Excellence in Uncertain Times

Tuesday 02 March 2021

Angela Foulkes: Chief Executive & Principal, The Sheffield College

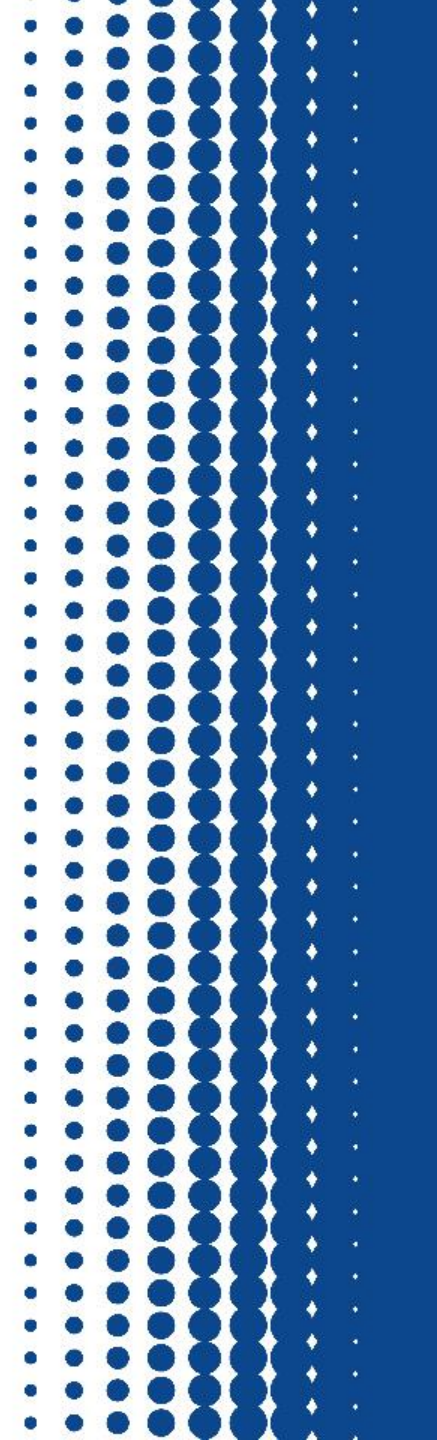
Building Strong Partnerships

What's the
problem we're
trying to solve?

*Who do we need
to work with to
solve it?*

How do we
engage those
potential partners
and stakeholders?

What will be
different if it
works?



The Sheffield College

The problem we were trying to solve

Improving the opportunities and life chances of our students



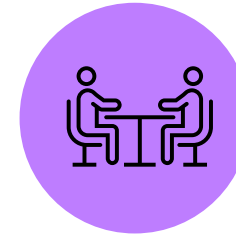
Building an exceptional work-related student experience



Increasing the numbers of students moving to Higher level study at a University

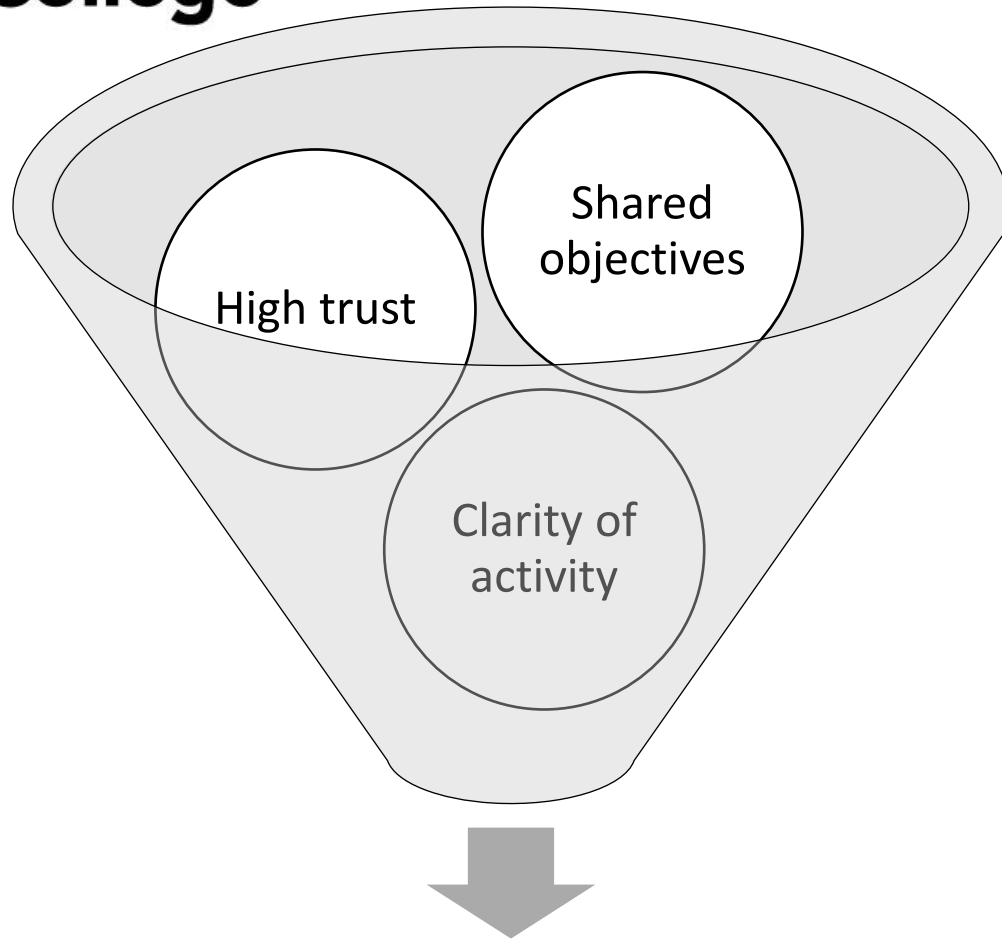


Supporting employers to get best value from Apprenticeship schemes



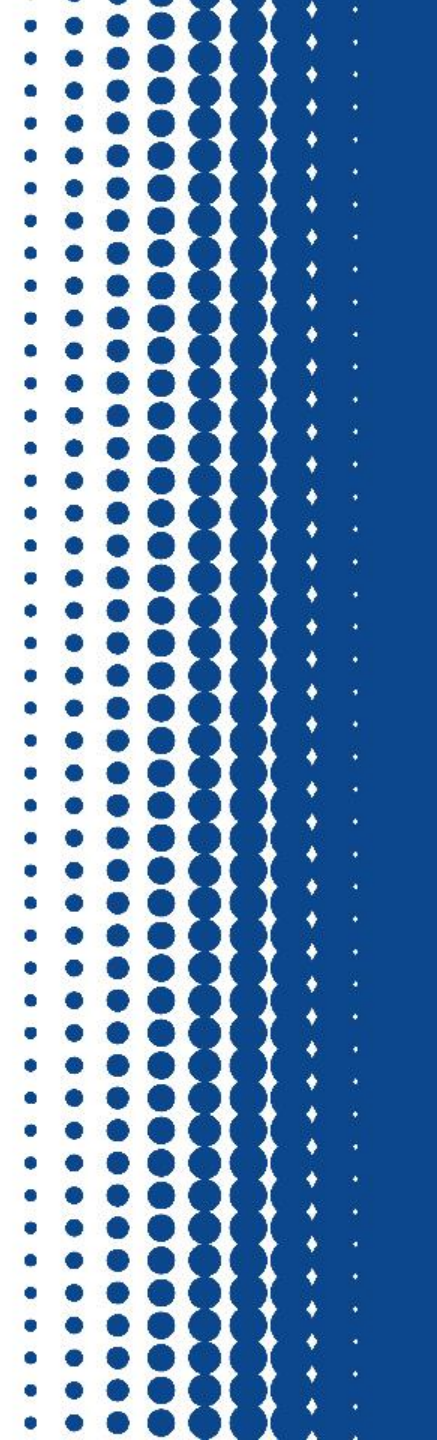
Adding value to the local and regional economy through engaging with businesses

Partnership “Principles” – Lessons Learnt



Mutually beneficial outcomes

- **WHY?**
 - Is there something in it for me?
- **WHAT?**
 - Will I need to do something?
- **HOW?**
 - What are the rules of engagement?
 - Be prepared to challenge and be challenged!
- **WHO?**
 - Will need to be involved?



Identifying Partners

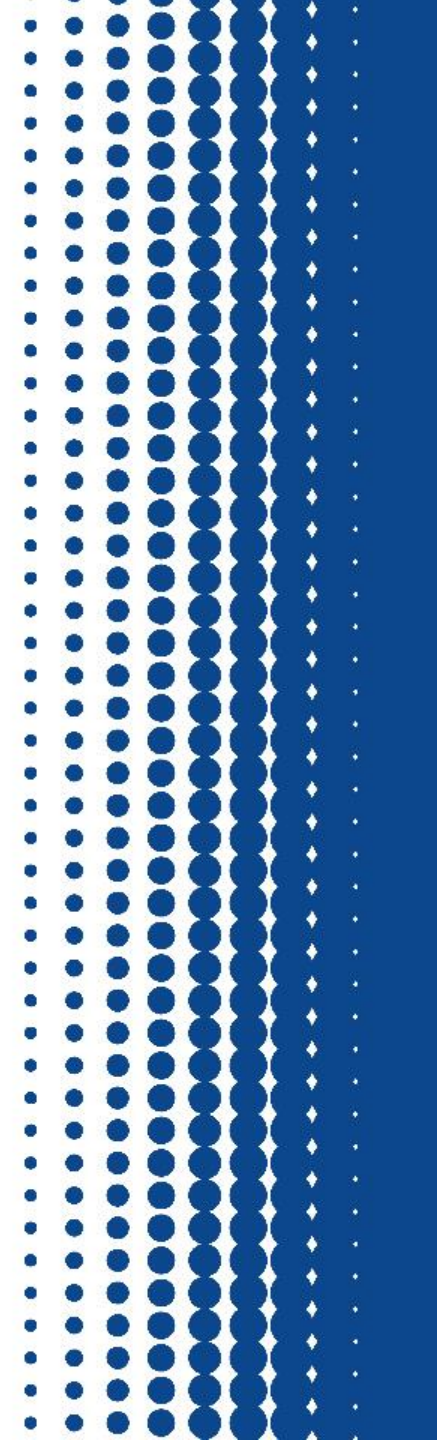
Local HEIs

Key “sector”
Employers

Key “local”
employers

Government
Departments

Combined
Authority



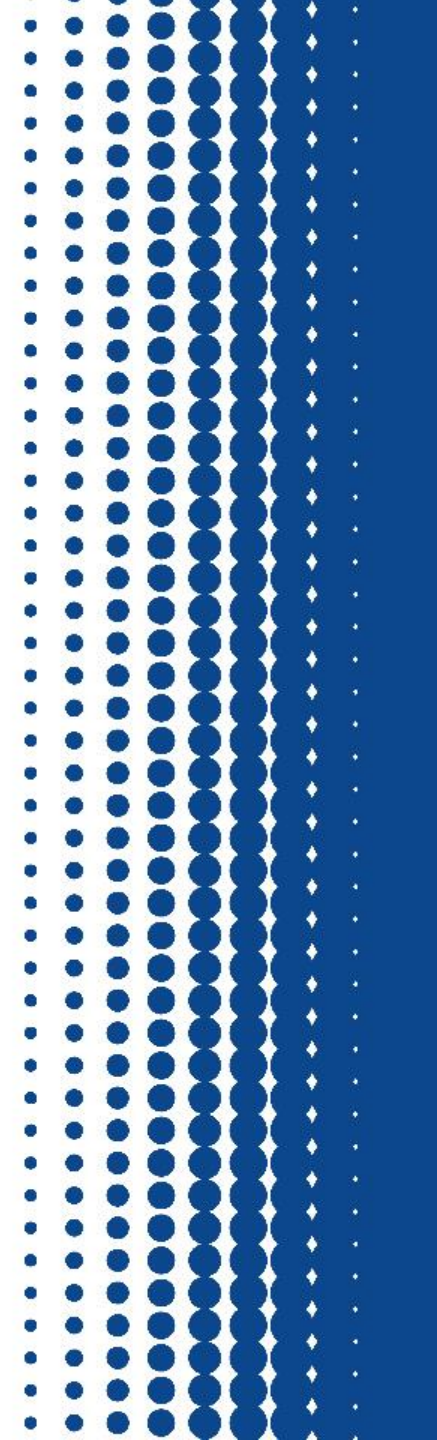
**The
Sheffield
College**

Working with local HEIs

**Sheffield
Hallam
University**

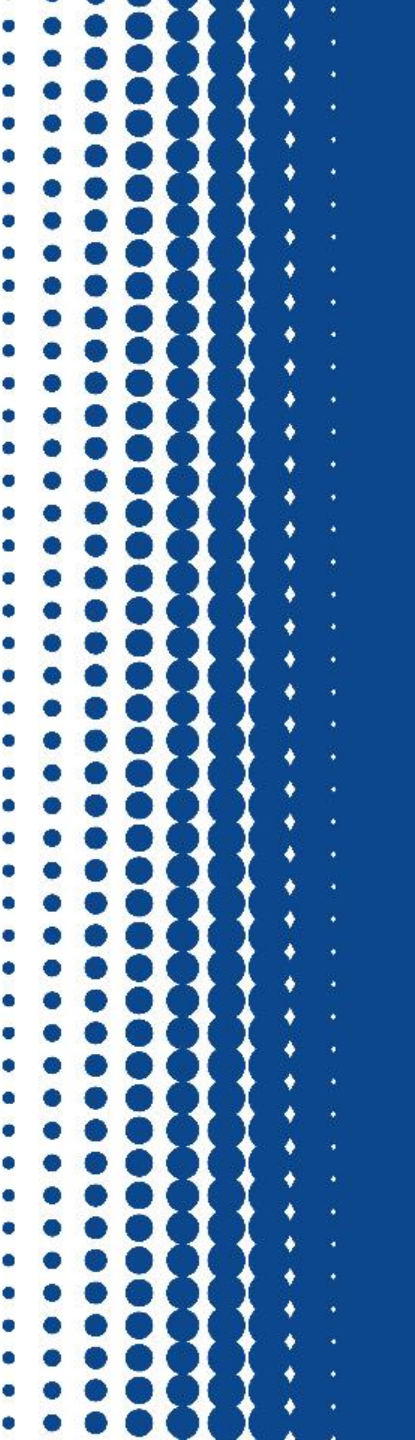


**The
University
Of
Sheffield.**



The Sheffield College

Employer Skills Academies



Lessons Learnt?

