



PDU

Practice
Development
Unit



opportunity 
NOTTINGHAM



The Story of Opportunity Nottingham

www.opportunitynottingham.co.uk |

@OppNottingham

Grant Everitt
Evaluation and Learning Lead – Opportunity Nottingham

About Opportunity Nottingham



- Part of the Fulfilling Lives Programme – www.multipledisadvantageday.org for info
- Funded by The National Lottery Community Fund for 8 years – due to end in June 2022
- Supporting people who experience Multiple Disadvantage via;
 1. System Change
 2. Delivery of Services
 3. Learning

How we define multiple disadvantage;

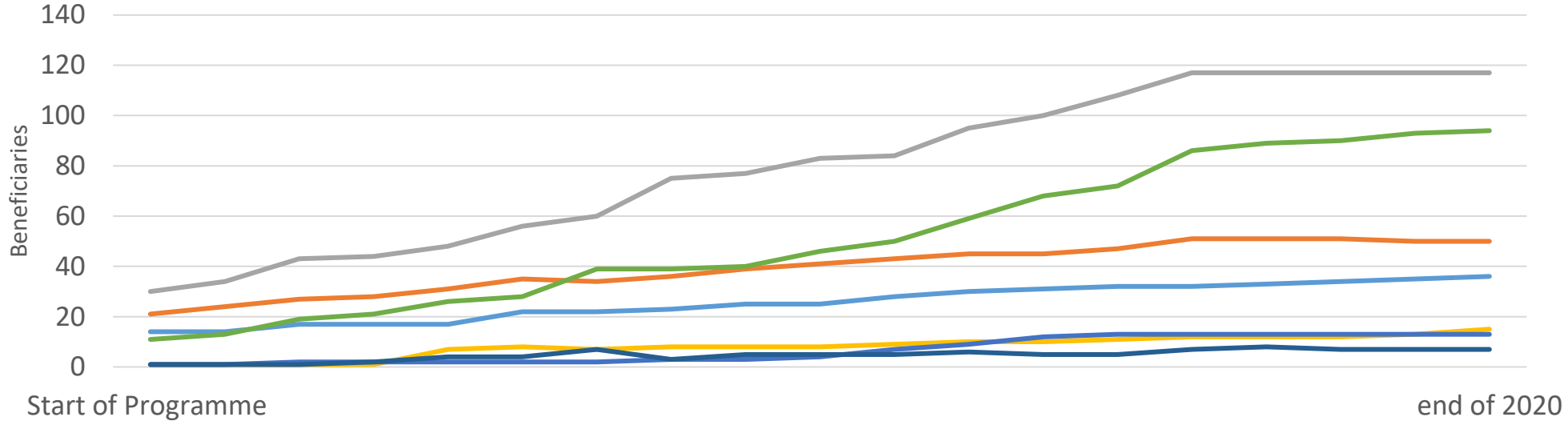
- Substance misuse
- Mental ill health
- Homelessness
- Offending
- New definition includes survivors of domestic / sexual abuse or violence

About Opportunity Nottingham



- A Partnership – statutory and voluntary sector representation
- Nottingham City programme
- Brief to work with only *the* most marginalised and excluded individuals – excluded from other services
- The presence of trauma
- Those that use huge resources across a range of services - “the system” - but without any meaningful outcomes

Beneficiary Destination



- Beneficiary died
- Beneficiary moved to different area before completion of programme
- Beneficiary no longer wants to participate in programme
- Moved to other support (not funded through this project)
- Prison
- Successful completion of programme

The Economic Case for Addressing Multiple Disadvantage

	Arrested		Not Arrested	
Spending category	Male	Female	Male	female
Accommodation	£9,185	£9,358	£6,063	£8,243
Criminal Justice	£31,756	£29,654	£7,504	£10,480
Physical Health	£3,960	£1,736	£1,599	£2,511
Mental Health	£4,211	£960	£1,377	£3,231
Substance Use	£1,678	£1,468	£1,610	£3,029
Total	£50,789	£43,177	£18,154	£27,494

Cost differences for beneficiaries who were arrested and those who were not arrested whilst on the programme
(Data from Fulfilling Lives Newcastle and Gateshead)

Our Theory of Change from 2014



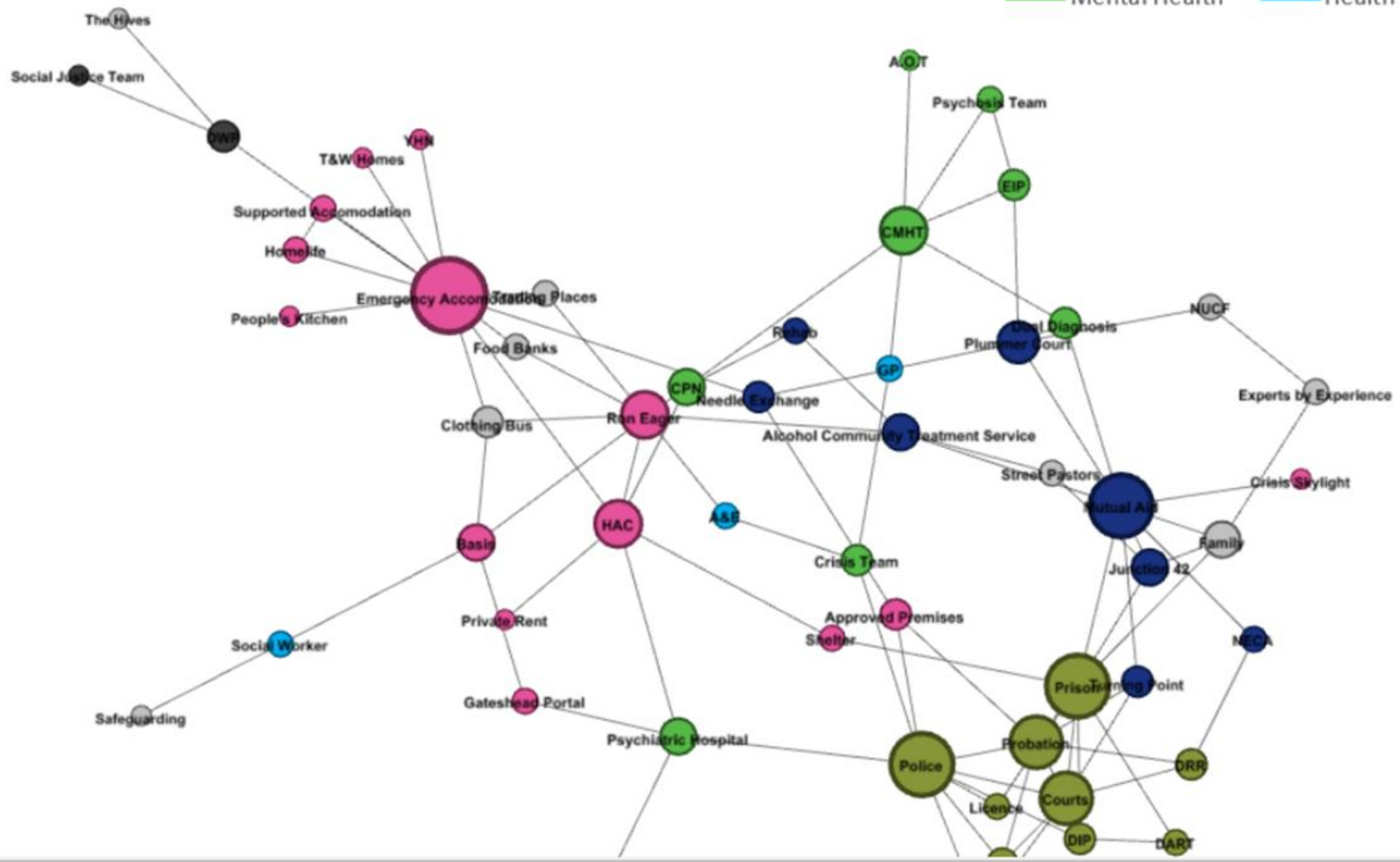
- Work with the most excluded – target 470 core service - Personal Development Coordinators (Navigators)
- At the same time through *System Change* the system becomes gradually less complex and completely joined up - so by 2022 Navigators are no longer needed

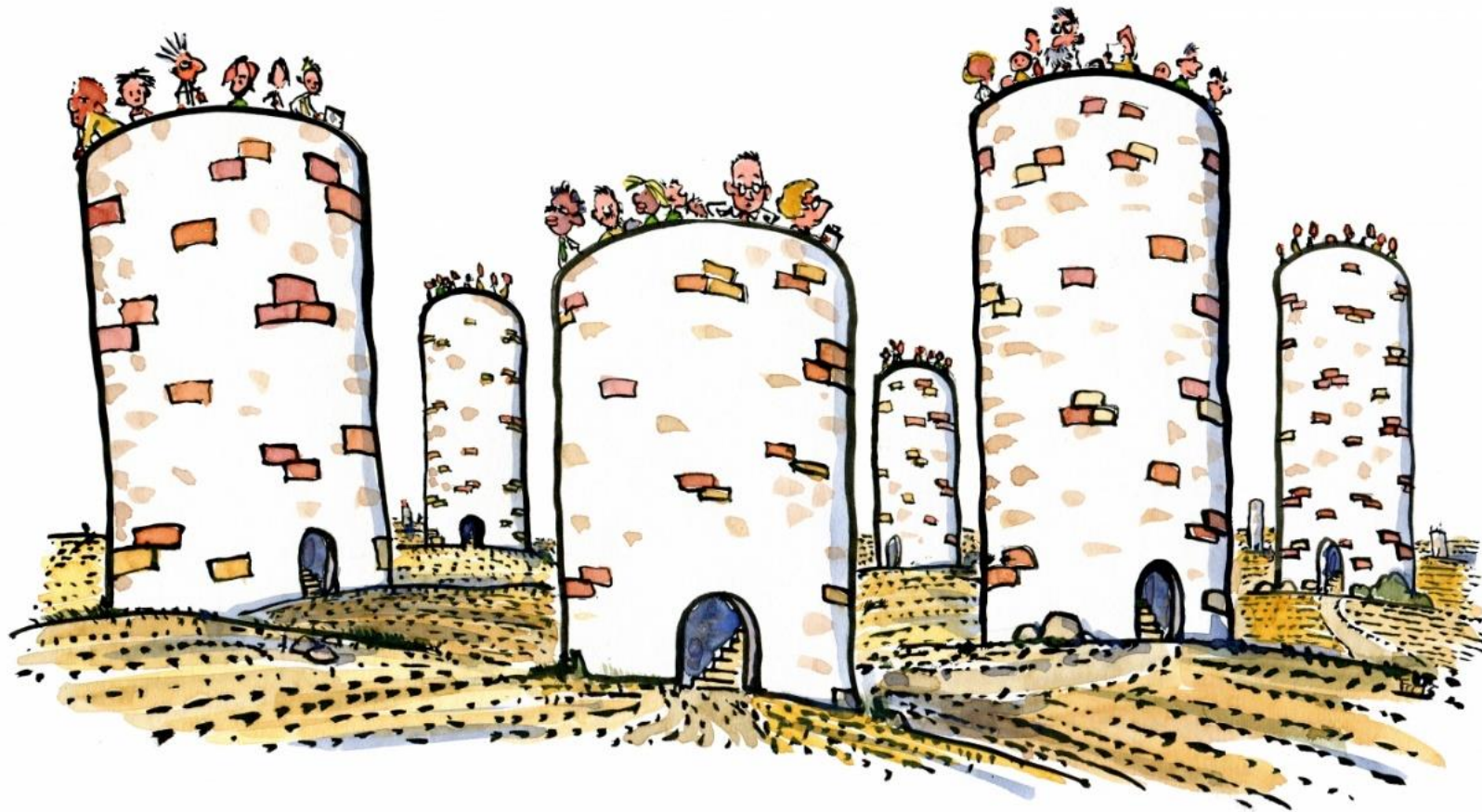
But it didn't quite work like that...

So What Actually Happened?



- The system was too complex
- Working in silos and system change isn't on the agenda
- We didn't understand how best to support beneficiaries
 - Lack of psychological insight – childhood trauma and neuro diversity
 - Degree of alienation from services – fight or flight
 - “What’s the point?” – lack of trust
 - People don't exist in silos
 - Too deficit based
- Under-representation of women and people from ethnic minorities
- Lacked strategic clout?
- Victim of own success?

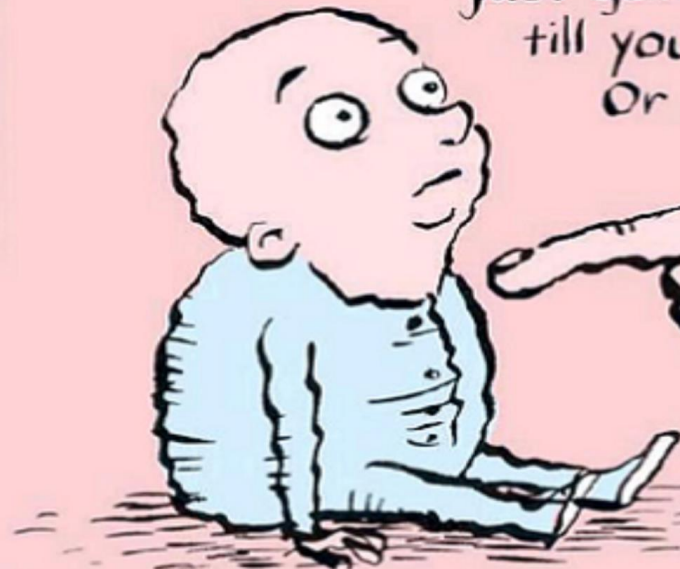




Frits Ahlefeldt

HISTORIC CLAIMS

YOU are going to make a lot of bad choices in your life
- choosing the wrong parents, the wrong socio-economic
group, and the wrong social welfare home, where you
are going to get yourself abused. After that you are
just going to carry on making bad choices
till you end up in prison.
Or a psych ward.



When are you going to take
some responsibility for yourself?

So What Did We Do? Learned and changed



Navigators;

- Build trust
- None-time limited support
- Person centred and strengths based
- Delivered where and when it suits the person
- Support to engage with services
- Advocacy
- No exclusions

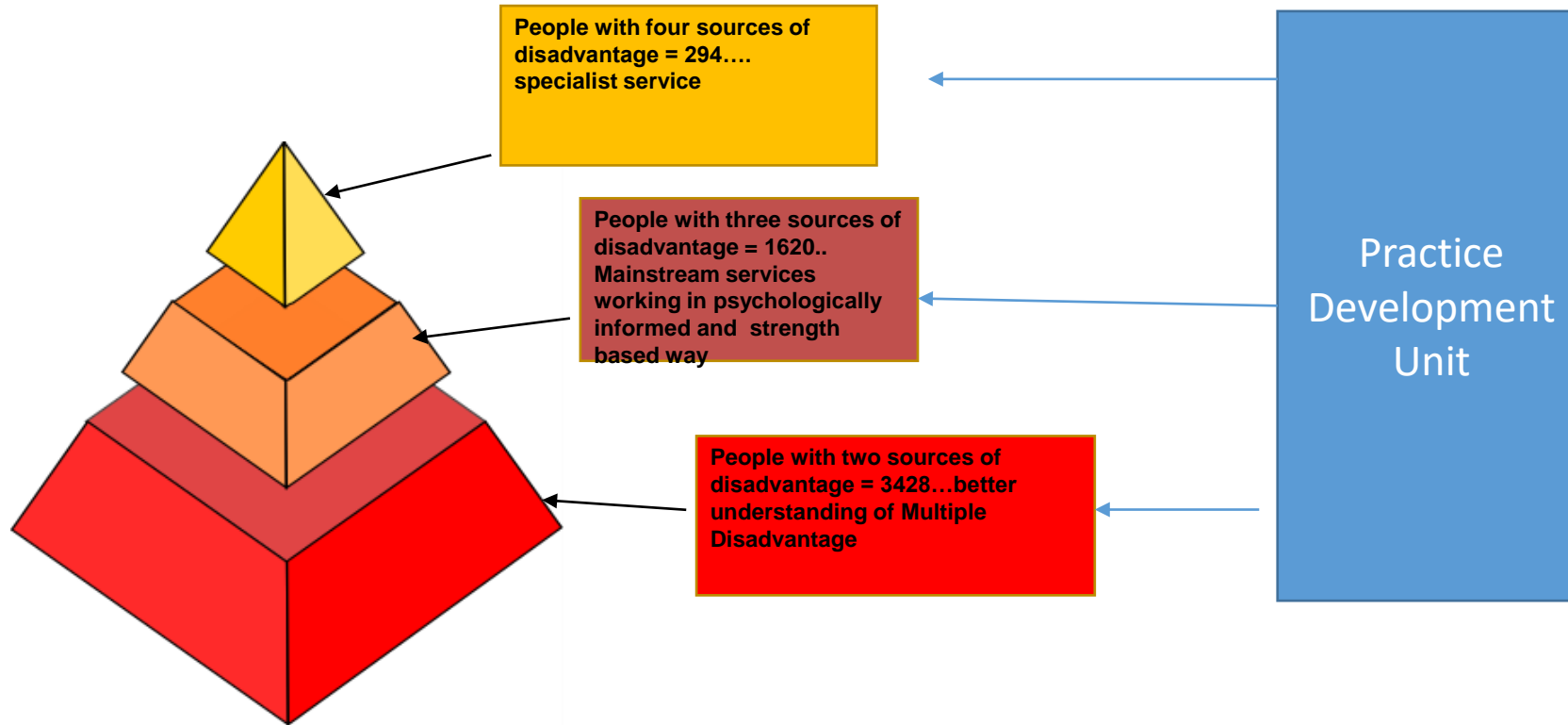
Other Core Roles – Not Add On's...



- Clinical Psychologist – develop a Psychologically Informed Environment and Trauma Informed Care approach
- CBT Practitioner
- Social Workers with Trusted Assessor Status
- Peer Mentors
- Employment – Training and Education Worker
- Housing First
- Expert Citizens
- Beneficiary Ambassadors

And System Change?

2019 - Joint Strategic Needs Assessment (JSNA) on Multiple Disadvantage



- Nottingham **8th highest** incidence of people facing Multiple Disadvantage in England. Estimated at 5,348 people (Hard Edges Study Lankelly Chase 2015)

2020 – Integrated Care Partnership (ICP) makes Multiple Disadvantage a Strategic Priority...



- Multiple Disadvantage a key strategic theme
- Legacy – end of Opportunity Nottingham
- Local Politicians - Health and Wellbeing Board
- Targeted/strategic Communications
- Voice of Lived Experience
- Robust learning and supporting practice development – PDU
- ICP have committed strategic leadership
- Success of *Everyone In...* MDT
- Health Sector buy-in... Homelessness specialist GP contract now an SMD contract
- Commissioner's willing to engage and learn

There are Challenges Ahead...



- Funding after Opportunity Nottingham?
- Funding Housing First in the longer-term?
- System still too complex – is it inevitable? Should Navigators be the long term answer – No wrong door?
- Data Sharing - Patient Knows Best
- Atrophy of silo working
- To boldly go... beyond rough sleeping

But to not do it is human and economic madness

For More Information...



Visit;

www.opportunitynottingham.co.uk

www.multipledisadvantageday.org

Follow;

#seethefullpicture