

# Supplementing Universal Credit Support at a Local Level

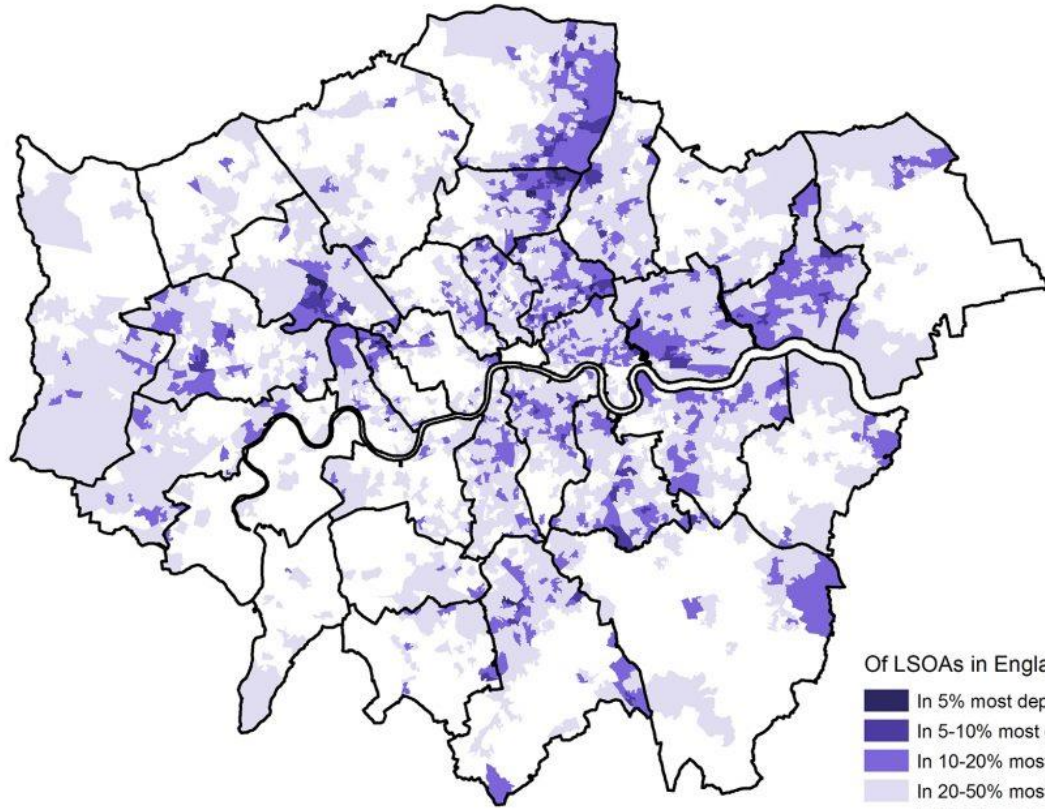
7 October 2021

Cllr Mufeedah Bustin

Cabinet Member for Social Inclusion & Public Realm (Job Share) – Lead on Social Inclusion

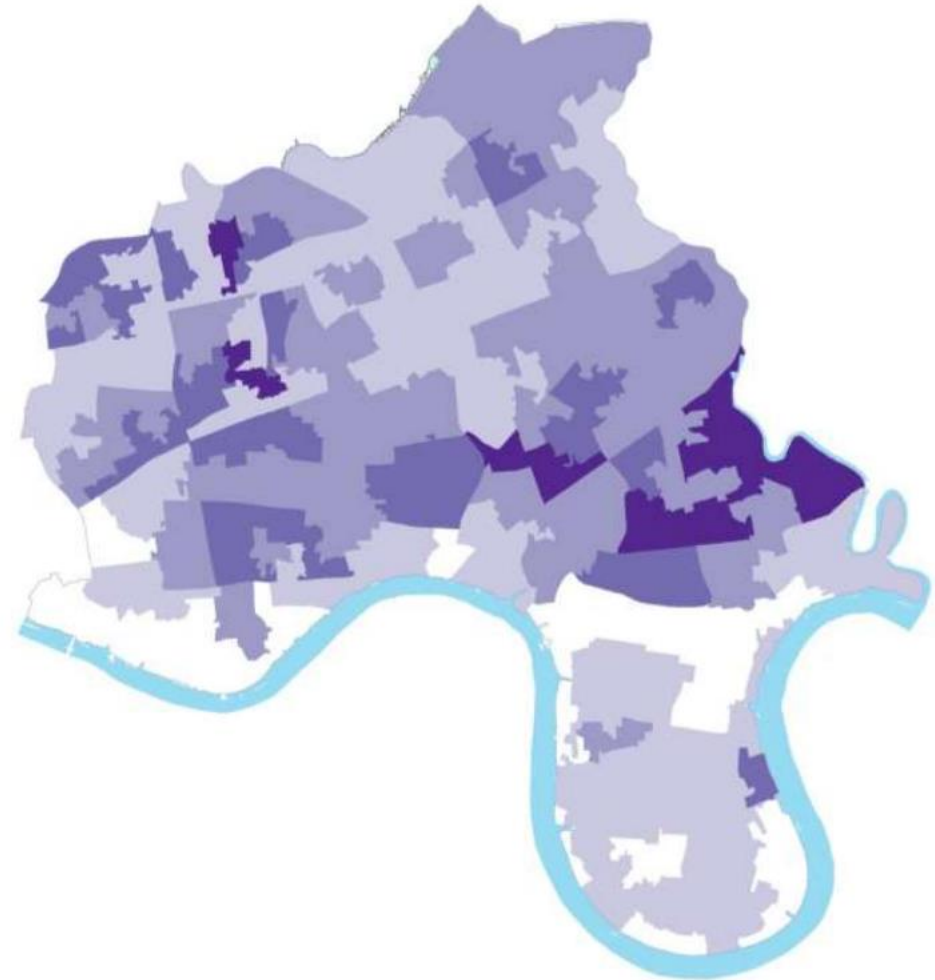


# Tower Hamlets



Of LSOAs in England

- In 5% most deprived (8)
- In 5-10% most deprived (99)
- In 10-20% most deprived (688)
- In 20-50% most deprived (2,031)
- In 50% least deprived (2,009)





# Tower Hamlets





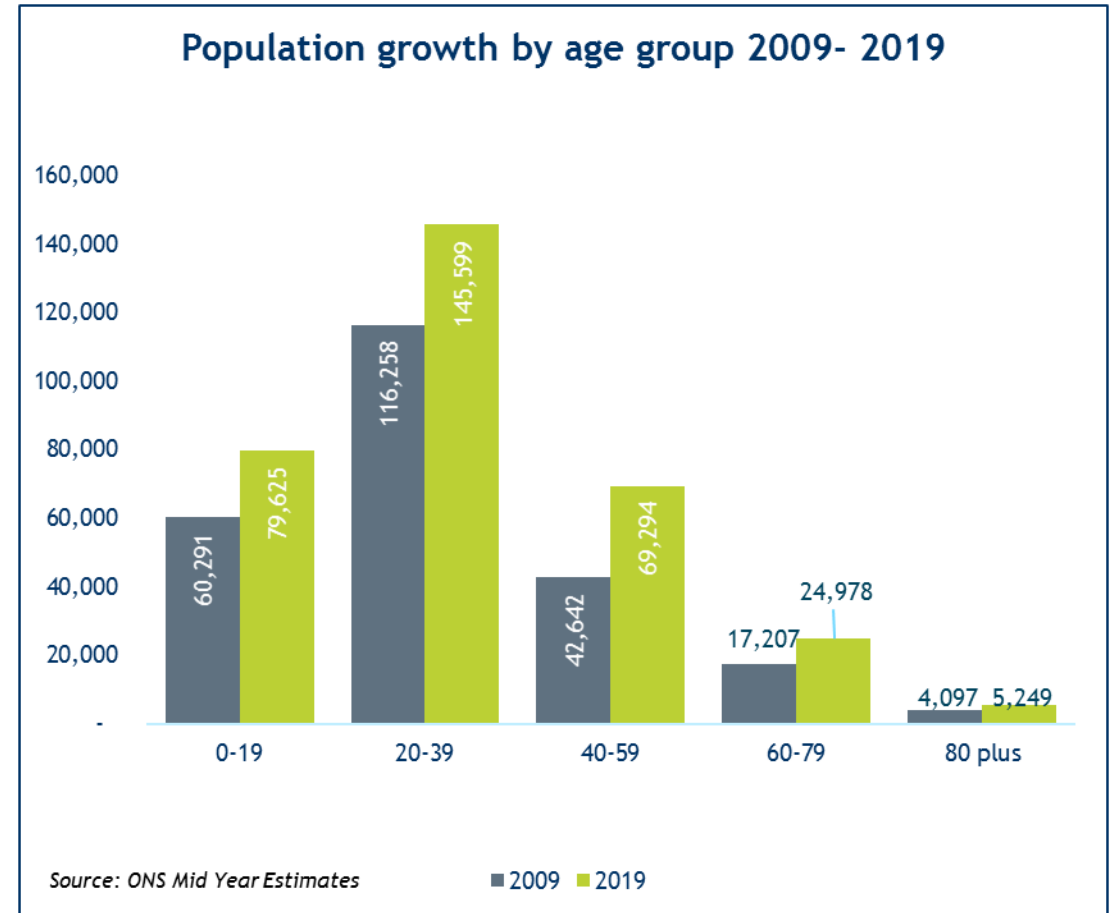
# Tower Hamlets



# Tower Hamlets



- Key facts
  - 325,000 residents (308,000: 2017)
  - 300,000 jobs in the borough
  - Most jobs (86%) are filled by non-residents
  - The median earnings of £870 for workers is the 2nd highest in the UK but....
  - Residents earn significantly less - £90 per week less, the highest gap in London



# Tower Hamlets



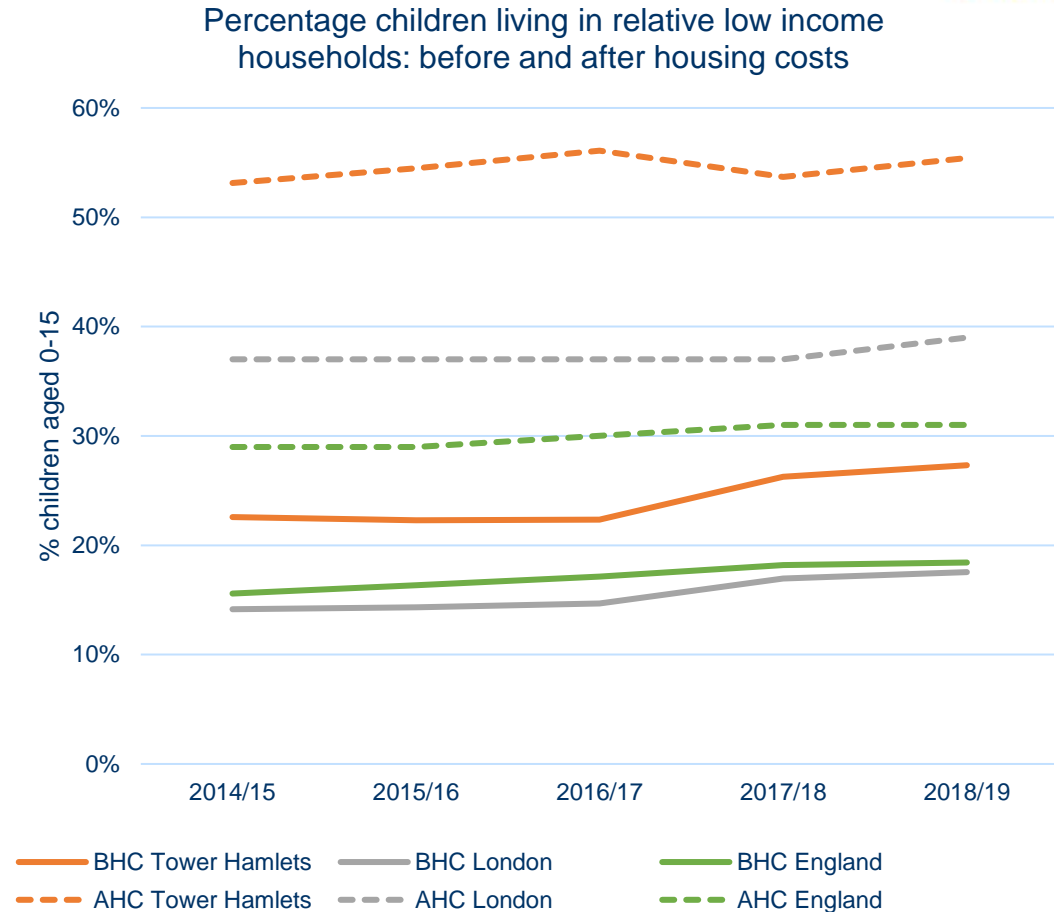
- Tower Hamlets became significantly less deprived between the 2015 and the 2019 Indices of Multiple Deprivation, moving from 10th to 50th on the rank nationally but 60% of the borough still within the 30% most deprived parts of England.
- Deprivation among children and older people is much higher than deprivation as a whole
- As with other parts of the country, in-work poverty appears to be an increasing issue with a high proportion of means tested financial support now going to people in work
- The Covid 19 pandemic has had a significant impact on worklessness which may have long term impacts on the extent and nature of poverty and deprivation within the borough



# Child poverty

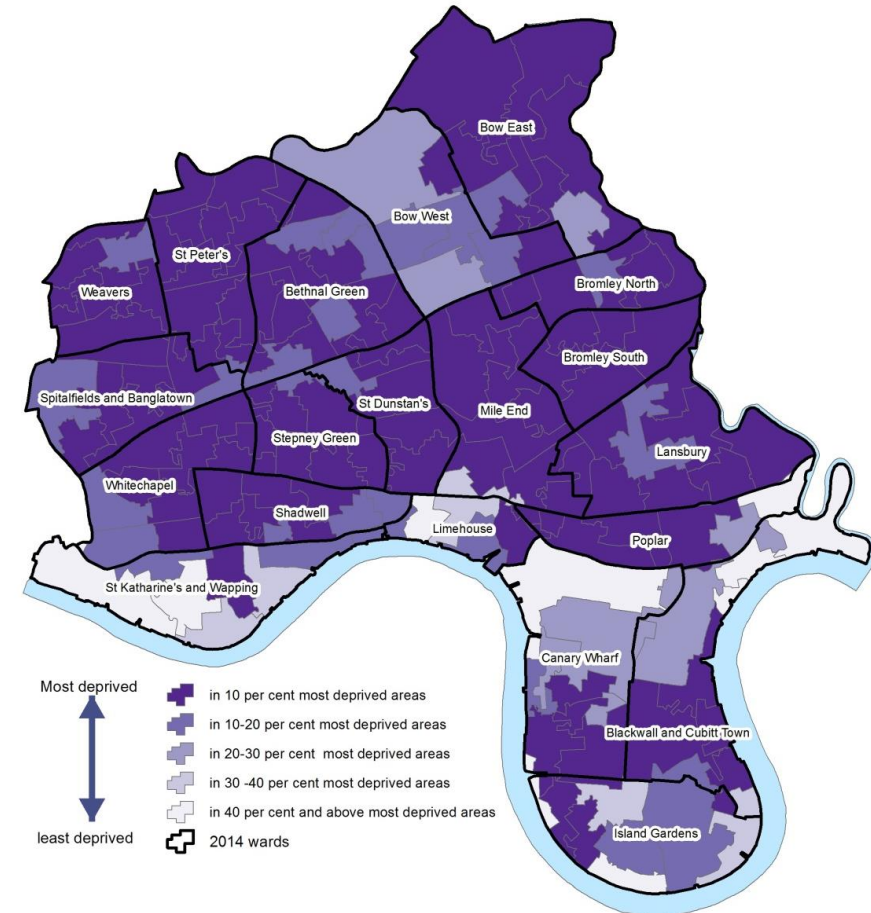


1. High and rising child poverty on the eve of the pandemic.
2. More children living in severe poverty and persistent poverty nationally. There is evidence that destitution is increasing, including locally.
3. Pre-pandemic drivers of child poverty: no fall in children in workless households, rising in-work poverty, high housing costs, and the impact of social security reforms.
4. Some evidence that Tower Hamlets 'bucked the trend': particularly in terms of the attainment gap.



# Poverty affecting older residents

1. 44% of older people in the borough live in income deprived households, the highest proportion in England and more than double the average. The over 65's make up just 6% of the borough's population (around 21,000 residents) compared to 12% in London and 18% in England. (ONS mid-year estimates 2018) (Borough Profile, 2020)
2. The map shows the the proportion of residents aged 60 or over who experience income deprivation. By this measure, 69% of local neighbourhoods (100 out 144) are in the 10% most deprived in England.

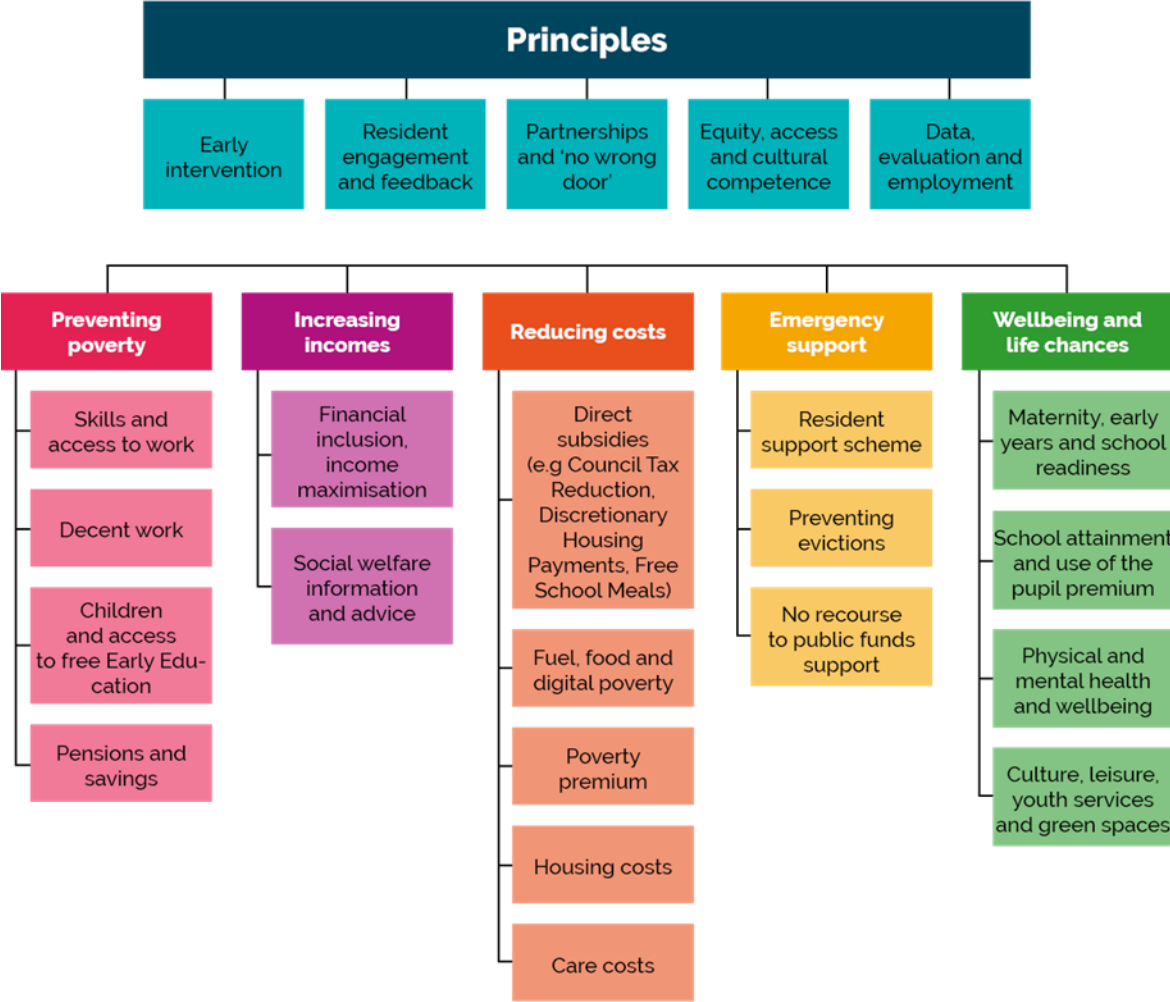


© Crown copyright and database rights  
2019 Ordnance Survey  
London Borough of Tower Hamlets 100019288.

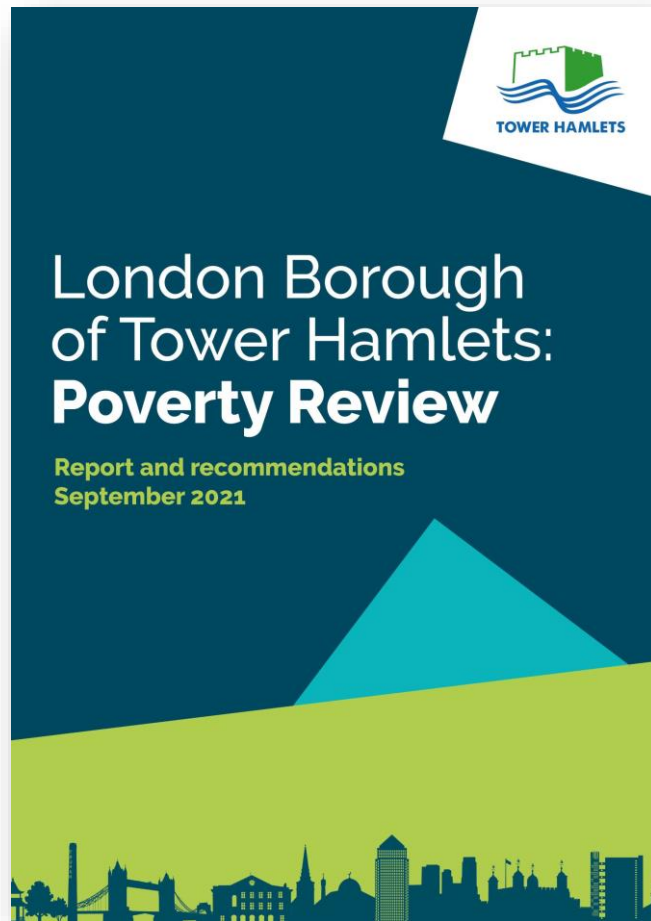




# Framework for local area action



# Poverty review -



- Review of council's interventions
- Members, residents, organisations views
- Children, older people, in-work



# What matters – recommendations for now



Work with partners to promote what is available



Ensure this information is accessible and communicated well



Support residents as pandemic protections are withdrawn and economic recovery begins



# Recommendations - longer term



<b>Short term impact</b> <b>Early financial intervention</b>	<b>Medium term impact</b> <b>Employment and skills</b>	<b>Long term impact</b> <b>A bright future for the new generation</b>
<p>A whole systems approach to increasing incomes, reducing costs and arrears, and averting financial crisis.</p>	<p>A partnership programme to improve skills, and access to decent work with opportunities for progression</p>	<p>A relentless focus on achieving the best possible outcomes for all children.</p>



# What's possible?

## For council, partners and community



Better understanding of journey and pathways of residents

Joined-up and accessible gateways and routes including information, advice and guidance

Rethink of our offer, how it is organised and delivered

Explore opportunities to use scarce council/partnership resources differently

