

Birmingham's Preparation for Adulthood Service

Health | **Employment** | **Housing** **Friends,**
Relationships & Community

**Supporting Young People
Transitioning from Child to Adult
Safeguarding Services**





Who are we?

We are an innovative service that works collaboratively across Birmingham and matrix managed between Adult Social Care and Birmingham Children's Trust.

Other key partners are within health, education, criminal justice, voluntary and community services.



BIRMINGHAM
CHILDREN'S TRUST



Birmingham and Solihull
Clinical Commissioning Group



Birmingham
City Council

Preparation for Adulthood

Health | Employment | Housing |
Friends, Relationship & Community



Our Service for 14 to 30 year olds

Have been or are currently part of the care system

Have experienced trauma or struggle to manage emotional wellbeing

Have a vulnerability that could cause harm to themselves or others

Have been or are currently part of the criminal justice system or at risk of offending

Have additional needs

St. Basils assist those currently or at risk of homelessness

Young Carers

Preparation for Adulthood

Health | Employment | Housing |
Friends, Relationship & Community



What is our approach?

Focused on 4 outcomes: Health, Employment, Housing, Friends, relationships and communities

Person centred , strengths based approach
focusing on future aspirations

Encouraging Co-production with support offered
by us and also other services

Creating strategic and operational changes to
improve outcomes across the whole system

Preparation for Adulthood

**Health | Employment | Housing |
Friends, Relationship & Community**



Our areas of work

Individual tailored support

Testing group sessions for young people, parent carers
and professionals

Testing new models of working that are 'oven ready' to
upscale

Influencing wider system change and testing new ways
of working including a PFA Transitions Network

Preparation for Adulthood

Health | Employment | Housing |
Friends, Relationship & Community



PFA Impact relating to Safeguarding

One to one support and group sessions for young people, families and professionals

Reduction of young people

- Not in Education, Employment and Training
- being exploited
- entering the criminal justice system or re offending
- Being unsafe
- Referred to Safeguarding teams

Increased young people

- back into education
- training, volunteering or in employment
- accessing the right services and support
- accessing community facilities
- engaging with positive activities

Preparation for Adulthood

Health | Employment | Housing |
Friends, Relationship & Community



Key points for a Safe Transition

Early Help
from Universal
and Targeted
support.
Prevention is
better than
cure

Person centred
approach with
effective good
practice



Correct circle
of support,
personal and
professional
network

Healthy
relationships
with the young
person and
trained
professionals

Preparation for Adulthood

Health | Employment | Housing |
Friends, Relationship & Community



Transition

Education:
EHCP year 9 reviews
Virtual Schools
Careers Service
NEET

Criminal Justice:
Youth Offending Service
to Probation



Health:

Co-ordination Childrens
Paediatrician to Doctor

Childrens to Adults
Social Care:
Disabilities
EmpowerU
Accommodation

Preparation for Adulthood

Health | Employment | Housing |
Friends, Relationship & Community



Transitions in Education

Area	Legislation/ Guidance	Tools	Transition ages
Education	<p>Education Health and Social Care plan (EHCP)</p> <p>https://assets.publishing.service.gov.uk/government/uploads/system/uploads/attachment_data/file/398815/SEND_Code_of_Practice_January_2015.pdf</p> <p>https://www.legislation.gov.uk/ukpga/2014/6/part/3/crossheading/education-health-and-care-plans/enacted</p> <p>https://www.localofferbirmingham.co.uk/education-specialist-support-and-provision/year-9-transition/</p> <p>https://www.localofferbirmingham.co.uk/post-16-and-preparing-for-adulthood/post-16-transition/</p> <p>Send code of practice</p> <p>https://www.gov.uk/government/publications/send-code-of-practice-0-to-25</p>	<p>EHCP</p> <p>EHCP Year 9 Reviews</p>	<p>16 – Year 11</p> <p>18/19 - Year 13</p> <p>25 – some EHCPs's</p>

Preparation for Adulthood

Health | Employment | Housing |
Friends, Relationship & Community



Transitions in Health

Area	Legislation/ Guidance	Tools	Transition ages
Health	<p>NICE Guidance for Transitions https://www.nice.org.uk/guidance/ng43</p> <p>National Framework for NHS Continuing Healthcare</p> <p>BCHC: https://www.bhamcommunity.nhs.uk/patients-public/children-and-young-people/transition/</p>	<p>Ready Steady Go</p> <p>Health Passport</p> <p>The Wellbeing and Health Transition (WHAT) booklet</p>	<p>Mostly 18 except:</p> <p>16 - Dental services</p> <p>16- Sensory Impairment</p> <p>18 and 25 - Forward Thinking Birmingham is a 0-25 year old service but medics either support up to 18 or over 18 e.g. Psychiatrists. Internal transfer</p>

Preparation for Adulthood

Health | Employment | Housing |
 Friends, Relationship & Community



Transitions in Criminal Justice

Area	Legislation/ Guidance	Tools	Transition ages
Criminal Justice	<p>National Protocol for Transitions In England</p> <p>https://www.gov.uk/government/publications/joint-national-protocol-for-transitions-in-england</p> <p>Joint National Protocol for Transitions in England. Joint protocol for managing the cases of young people moving from Youth Offending Teams to Probation Services.</p> <p>Young people discussed at a monthly Transition meeting for young people 17.5 – 18 years old</p>		18

Preparation for Adulthood

**Health | Employment | Housing |
Friends, Relationship & Community**



Transitions in Social Care

Area	Legislation/ Guidance	Tools	Transition ages
Social Care	<p>Care Act 2014 Transition from childhood to adulthood</p> <p>https://www.legislation.gov.uk/ukpga/2014/23/part/1/crossheading/transition-for-children-to-adult-care-and-support-etc/enacted</p> <p>https://www.scie.org.uk/care-act-2014/transition-from-childhood-to-adulthood/young-carer-transition-in-practice/transition-in-care-act-children-and-families-act.asp (Social Care Institute for Excellence)</p> <p>Leaving Care Act 2000</p> <p>https://www.legislation.gov.uk/ukpga/2000/35/section/3</p> <p>https://www.birmingham.gov.uk/info/20018/adult_social_care/1400/preparing_for_adulthood</p> <p>Send code of practice</p> <p>https://www.gov.uk/government/publications/send-code-of-practice-0-to-25</p> <p>Young people discussed at the monthly Transition Operation Oversight Group (TOOG)</p> <p>PFA has an overarching Transitions Strategy for Birmingham</p> <p>NDTI has guidance</p> <p>https://www.ndti.org.uk/news/pathways-to-getting-a-life-published</p>	<p>Pathway Plan</p> <p>Health passports for children in care (CIC)</p>	<p>16 Care leavers</p> <p>14 + start discussions with regards to Transitions</p> <p>17</p>

Preparation for Adulthood

Health | Employment | Housing | Friends, Relationship & Community



EMPOWERU Team and Hub



BIRMINGHAM
CHILDREN'S TRUST

A Contextual Safeguarding multi agency hub for safeguarding risks for 0-18 year olds outside of the family home. This is a Complementary service to the Children Trust Social Work and Family Support Teams

BCT work in partnership to enhance the quality and response for children at risk from **child sexual exploitation, going missing from home, care, education and criminal exploitation, including gang affiliation, serious youth violence peer on peer abuse and radicalisation**. Stronger links are being made with education for information about **children missing education, exclusions and absent**.

Daily screening and triage of all missing episodes and Exploitation referrals

Daily briefings to assist with immediate safety planning, disruption planning meetings and strategy meetings

Preparation for Adulthood

**Health | Employment | Housing |
Friends, Relationship & Community**



EMPOWERU partners



BIRMINGHAM
CHILDREN'S TRUST

Preparation for Adulthood team
Barnardo's
Multisystemic Therapy team
Locate
The Childrens Society
Fire Services
Redthread
RSVP
Community groups
Faith groups

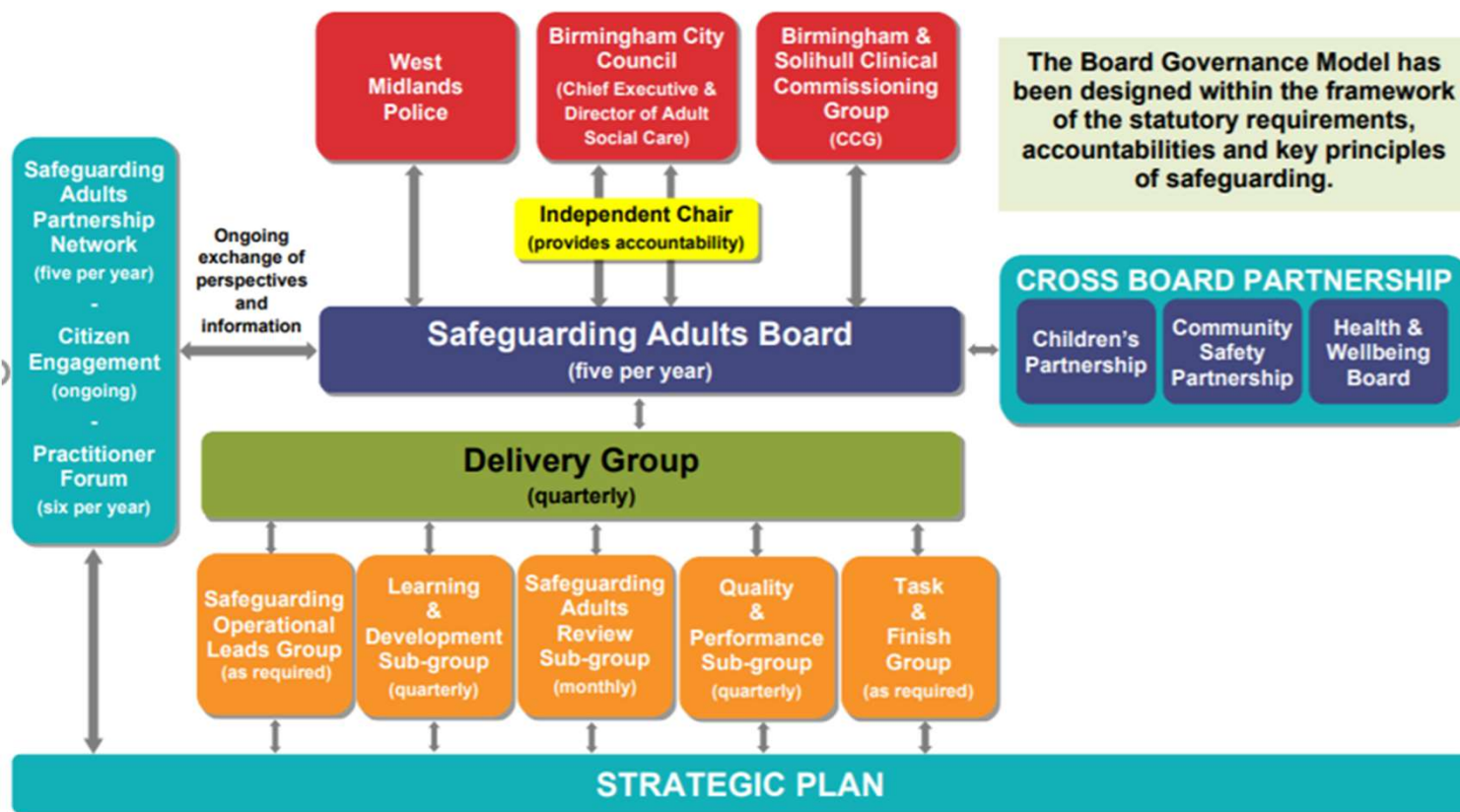
Police
Youth Offending Service
Education
Housing
Licensing
Border Force
Youth Services
Community Safety partnership
Childrens Centres

Preparation for Adulthood

**Health | Employment | Housing |
Friends, Relationship & Community**



Adult Safeguarding board



Preparation for Adulthood

**Health | Employment | Housing |
Friends, Relationship & Community**



Contact details

Email for enquiries:

PreparationforAdulthood@birmingham.gov.uk

Website:

birmingham.gov.uk/preparation-for-adulthood

Contact Number:

0121 303 1888

Preparation for Adulthood

**Health | Employment | Housing |
Friends, Relationship & Community**



Thank you

Do you have any questions?

Preparation for Adulthood

**Health | Employment | Housing |
Friends, Relationship & Community**