



UK's first benchmark for
green infrastructure

We have created a framework of quality standards which are free to use and can assist with the planning and development of great places for people and wildlife.



Building
with Nature



Building with Nature defines quality

Collating evidence and good practice, and co-designed in partnership with industry, BwN Standards define high-quality green infrastructure **at each stage** of the development process, from planning and design, through to implementation, and long-term management and maintenance; and can be used on **all types and scales** of development.

Standards Framework

(BwN 2.0)

Quality Standards and Good Industry Guidance

In 2018 BwN launched a framework of GI Standards which are free to use and can assist with the planning and development of new places and communities for the benefit of people and wildlife.

BwN refreshed Standards Framework 2.0 and BwN GI training launched June 2021, strengthening support for industry and local authorities to tackle the climate, ecological, and health emergencies.





How does high-quality green infrastructure help to deliver better development?

Climate emergency

mitigation (reducing carbon)

e.g. urban cooling, sequestration

adaptation (responding to carbon)

e.g. SuDS for flood resilience

climate positive* behaviours

e.g. safe, green, convenient active travel routes

**climate positive + healthy*



How does high-quality green infrastructure help to deliver better development?

Ecological emergency

making space for nature

- *Ecological connectivity / Nature Recovery Networks / LNRS*
- *Enhancing biodiversity / Biodiversity Net Gain*
- *“nature on your doorstep”*



Hospital

How does high-quality green infrastructure help to deliver better development?

Health emergency

focusing on outcomes for people

- *Reducing health and social inequalities ('green social prescribing')*
- *Accessible and high-quality greenspace for everyone ('daily dose of nature'/natural health service)*
- *Wider determinants of health / linking the built + natural environment e.g. air pollution + childhood asthma*



How does high-quality green infrastructure help to deliver better development?

Green Growth

How do we Build* Back Better?

*Green infrastructure at the heart of quality placemaking + place-keeping (*inc. retrofit)*

Valuing nature-based solutions (NbS)

-protecting + restoring diverse natural ecosystems (ecosystem services from healthy natural forests, grasslands, wetlands e.g., carbon storage, can be greater than managed equivalents owing to greater soil depth, age & structural diversity)

-creating new managed or hybrid 'grey-green' approaches (e.g., city parks or green roofs) contribute to urban cooling, storm-water management, and bring mental + physical health benefits

The BwN Standards Framework 2.0

12 Quality Standards providing a definition of high-quality green infrastructure

CORE



WELLBEING



WATER



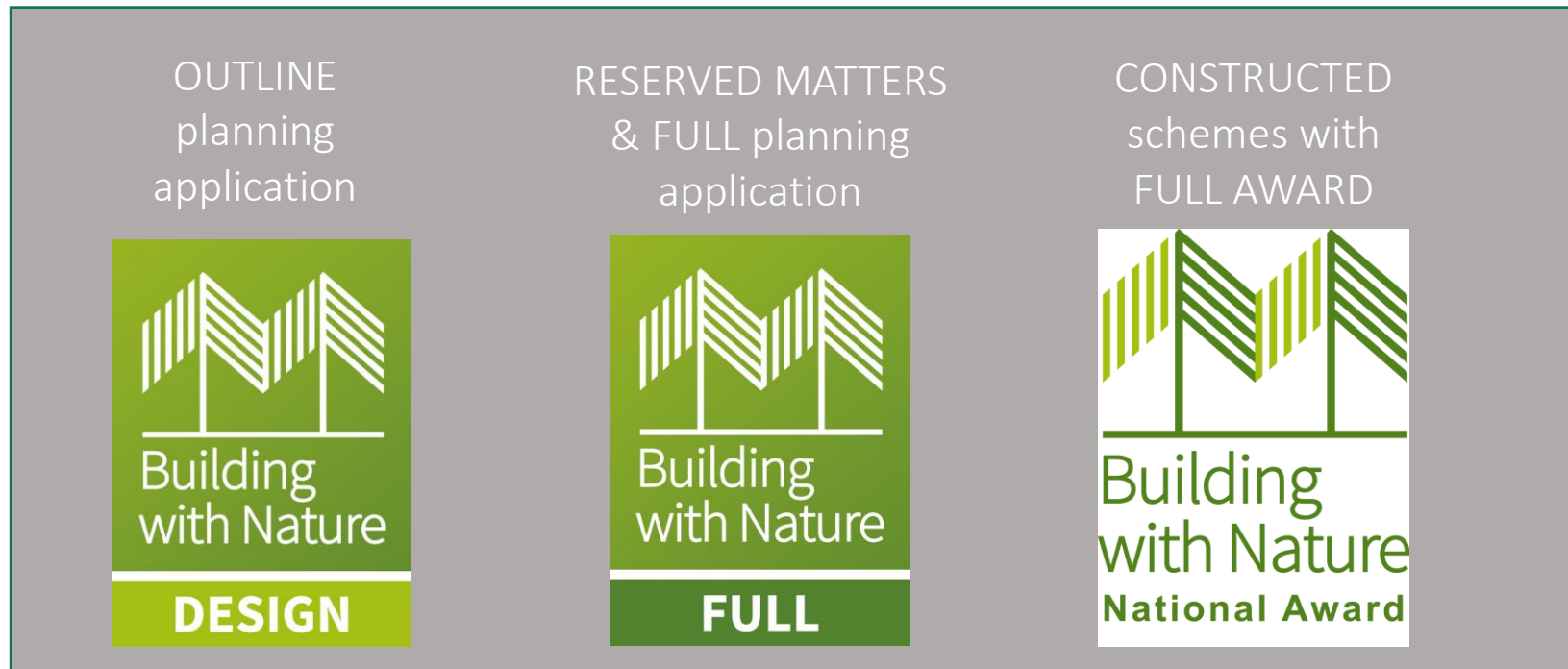
WILDLIFE



Building with Nature Awards

We offer Awards at both pre- and post-construction stages, to highlight what good looks like at each stage of the green infrastructure lifecycle.

Schemes which are signed off post-completion, will be invited to apply for a Building with Nature National Award.



We accredit policy documents to confirm local authorities have clearly defined their requirements for high-quality green infrastructure.



The benefits of BwN approach for developers

**Reducing
planning
uncertainty**

Shared framework of consistent, evidence-based design principles to adopt at an early stage of planning

Smoother/faster passage through planning – more consensus, less arbitration

A mechanism to secure biodiversity gains, health and wellbeing outcomes, sustainable water management, and landscape connections

BwN can act as a blueprint for the GI and ecological aspects of your design codes, guides and policies

Allocating the 'right' land for development - Framing ecological assets as opportunities for connectivity to LNRN, rather than development constraints

Our Standards Board

The Building with Nature Standards are overseen by our Standards Board, comprised of professional bodies, leading experts in green infrastructure and representatives from industry and government across the UK.



**Northumbria
University**
NEWCASTLE



**The Scottish
Government**
Riaghaltas na h-Alba



Llywodraeth Cymru
Welsh Government



planning advisory service



Environment
Agency



**Taylor
Wimpey**



**Landscape
Institute**
Inspiring great places



tcpa



WILDLIFE STANDARDS

Standard 11 Delivers Wildlife Enhancement



WILDLIFE STANDARDS

Standard 12 Underpins Nature's Recovery



Building with Nature & Biodiversity Net Gain

- BNG is a quantitative measurement that should be underpinned by a robust metric (Defra Metric 3.0) assessing pre/post-development biodiversity value.
- Mandated to all new development under Town and Countryside Planning Act from spring 2023; includes Nationally Strategic Infrastructure projects.
- Must deliver 10% gain (or 15% in LNRS priority areas where they are defined). But where possible we should be striving for more ambitious GI in developments. BwN will be looking for optimal enhancement of biodiversity within the LPA guidelines i.e., our position is driven by context.
- The EB sets out a proposal for a 30-year management period – BwN supports this by securing the most appropriate, proportionate, and sustainable solution to long-term M+M.
- It will be important for LPAs in England to be very clear when working with planners and developers about the benefits of BwN in terms of enhancing GI quality and placemaking - creating better places for people to live *but also*, they need to deliver on BNG policies which will need to be accredited through a different means.





Natural England GI Standards

Green infrastructure principles + GI mapping + user guide for local authorities how to use

Looking for volunteers for testing GI mapping

Menu of GI standards (e.g. ANGSt, Fields in Trust) – interviewing LPAs how they use them

Inform development of Urban Greening Factor

GI Standards launch Summer 2022 + Design guide (what works well, case studies)

Essex Green Infrastructure Story

2015

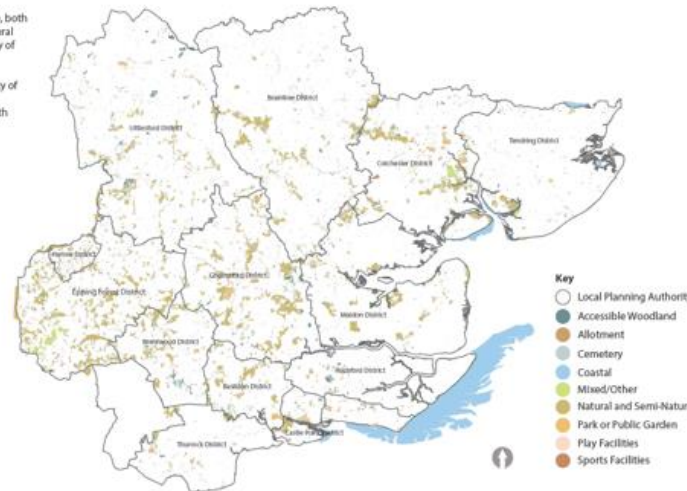
ENCAC. Essex Natural Capital Asset Check Green Infrastructure at County Level

Green Infrastructure
Green Infrastructure is a network of multi-functional greenspace, both new and existing, both rural and urban, which supports the natural and ecological processes and is integral to the health and quality of life of sustainable communities.

The data shown on this map has been compiled by the University of East Anglia following a desktop analysis of Ordnance Survey MasterMap and Open Street Map. The categories correspond with those described in the EcoSrv Handbook Version 3.3.

Facts and Figures

Local Planning Authority (LPA)	Area of GI (ha)	% cover of LPA
HARLOW DISTRICT	434.9	20.8
EPPING FOREST DISTRICT	6258.9	18.5
CHEMFORD DISTRICT	5134.6	15
CASTLE POINT DISTRICT	662.8	14.8
BAGSDON DISTRICT	1553.4	14.1
BENTWOOD DISTRICT	2018.5	13.2
COLCHESTER DISTRICT	3755.4	11.2
MALDON DISTRICT	2633.9	7.4
UTILESFORD DISTRICT	4008.2	6.3
BRAINTREE DISTRICT	3525.9	5.8
ROOFORD DISTRICT	788.2	4.7
TENDRING DISTRICT	1467.6	4.4



BETWEEN 2016 & 2036:

179,660
homes needed

137,660
homes planned

298,700
new people (+ 17%)

79,000
new jobs (+10%)

2017

2020 - Now

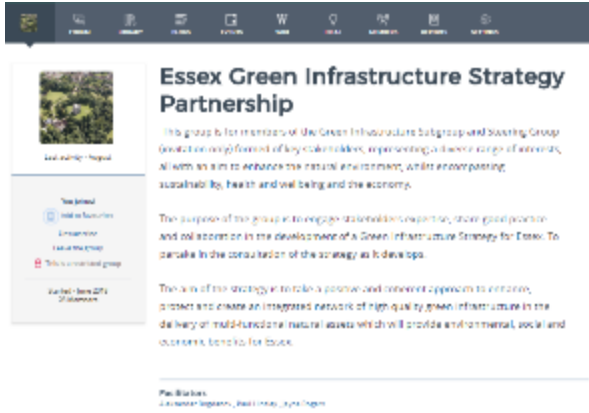
Action Planning and
Implementation



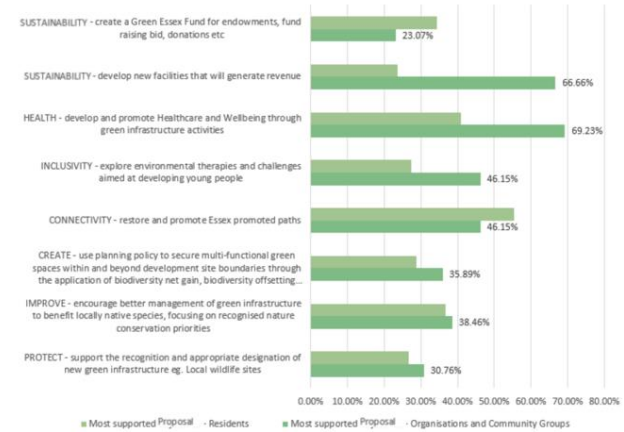
2018 - 2020

Engagement & Strengthening the Strategy

Partnership Knowledge Hub Platform



Public Consultation May 2019 – 9 weeks



GI Planning Policy Assessment Score

			Supportive of G	GI benefits in	GI policy outside	Early/integral	Early engagement	Multi-functions	Natural Capital	Off-site analysis	On-site survey	GI Network	Enhance biodiversity	Habitat network	Watercourses & SUDS as multi	Naturalised SU	Access to water	Aesthetic of wa	Ameliorate air	Active travel lin	Links to wider r	Recreational ro	Open space sta	Multi-user desi	Agreed manage	Functional mai	Resourcing the	
			A	B	C	D	E	F	G	H	I	J	K	L	M	N	O	P	Q	R	S	T	U	V	W	X	Y	Z
vision	Coverage																											
	Strength																											
chapter 6 page 22	Coverage																											
	Strength																											
Table 2	Coverage																											
	Strength																											
chapter 8	Coverage																											
	Strength																											
chapter 9	Coverage																											
	Strength																											
Overall Scores	Coverage																											
	Strength																											

Strong on PLACEMAKING but weak on PLACEKEEPING (stewardship?)
Weak wording – Opportunity to develop PROPORTIONAL policy

Coverage 54%
Strength 14%

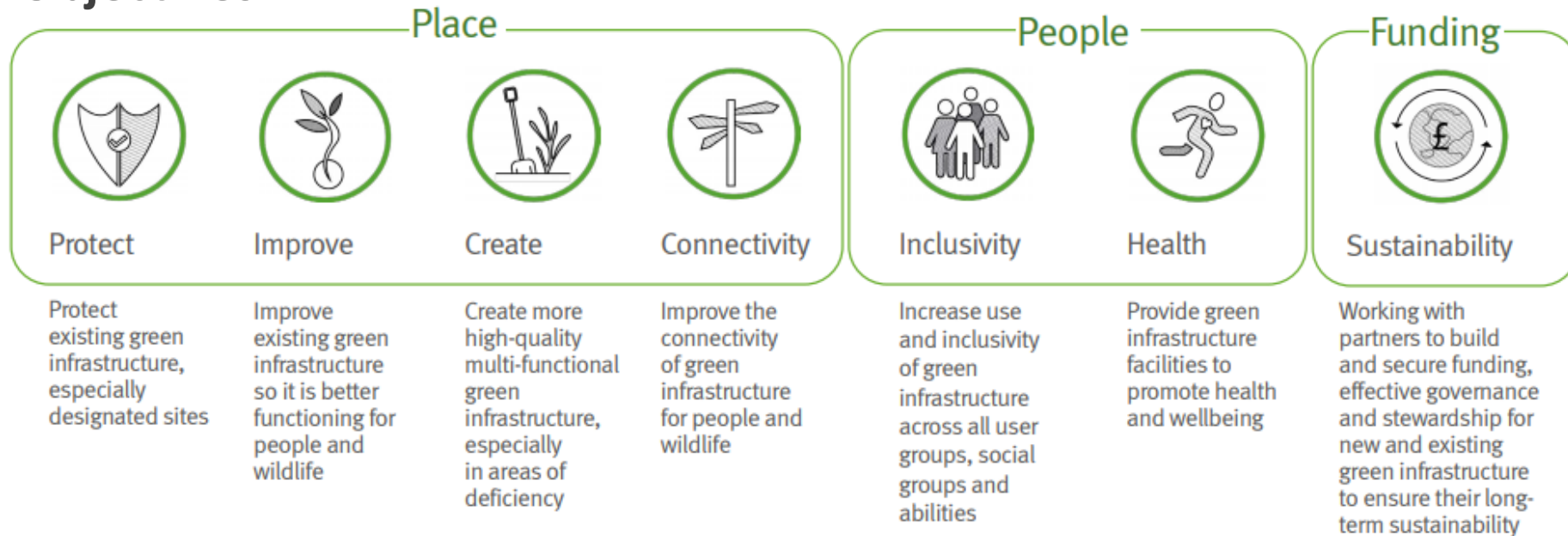
Essex Green Infrastructure Strategy



Our Vision

We will protect, develop and enhance a high quality connected green infrastructure network that extends from our city and town centres, and urban areas to the countryside and coast and which is self-sustaining and is designed for people and wildlife.

Our Objectives



Delivery

- Key Project themes
 - Marketing, branding and promotion .
 - Re-designation of green infrastructure .
 - Environment net gain and offsetting .
 - Improve, repurpose and create new multi-functional green infrastructure .
 - Natural flood management techniques .
 - Connect people to green infrastructure through active travel
 - Delivering environmental therapies and activities.

Sectors

- Planning
 - Supporting Large & Small Developments
 - Retrofitting in our Towns and Villages
 - Minerals & Waste Restoration
- Improve Highways and Greenways
 - Enhance PRow
 - Reduce pollution
- Coastal
 - Living shorelines – reclaim land for GI
 - RAMS
- Flooding
 - GI as part of SuDs
 - Natural Flood Management – i.e. leaky Dams

Energy

- Bio-solar Farms
- Bio Fuels

Health and Wellbeing

- Social prescribing
- Active Essex Local Delivery Plan

Education

- Outdoor classroom – Living laboratories
- Forest schools
- Ensure access to GO on school grounds.

Agriculture

- Opportunities through the Agricultural Act & Environment Bill
- Environment Land Management Schemes

Essex GI Projects

In progress

- The Essex Forest Initiative
- England Coast path in Essex
 - “Path to Prosperity” in Tendring
- Natural Flood Management
 - Canvey Make Rainwater Happy
 - Increased Adoption of SuDs in all development
- Town Centre Regeneration
- Active Essex Local Delivery Plan
- Green Infrastructure Garden Communities and Development consultation service and GI Standards Trials

Commencing

- Green Essex Foundation, GI Investment Report
- Green Essex Network/Local Nature Partnerships,
- Nature Recovery Strategy

