

Domestic Abuse Prevention



Kal Kohli - Programme Director, Prevention and Early Intervention Adult Social Care

Balwinder Kaur - Assistant Director, Adult Social Care and Safeguarding Lead



Overview

- **Context**
 - Domestic Abuse in Birmingham
- **Our Approach to Prevention and Early Intervention**
 - Our Domestic Abuse Prevention pathway
 - The Domestic Abuse Wellbeing Hub - Building recovery into crisis interventions
- **Strengthening Equality, Diversity and Inclusion responses**
 - Our DA commissioned services
 - Creating a Community grants prospectus
- **Safeguarding: Improving Protection and Providing Support**

Some Relevant Facts & Figures - Birmingham

Birmingham's population is 1.1 million, of which 46% are under 30 years old

Over 200 different nationalities live in Birmingham, and 42% of the population is BME



Birmingham is the **third** most deprived core city

More than **40%** of children live in relative poverty



There is a **10-year gap in life expectancy** between poorest and most affluent areas

90% of wards are more deprived than the national average



Domestic Abuse in Birmingham

In Birmingham between March 2020 and February 2021 there were **23,876** reports of Domestic Abuse received by West Midlands Police this accounted for **20% of total recorded crime** for this period.



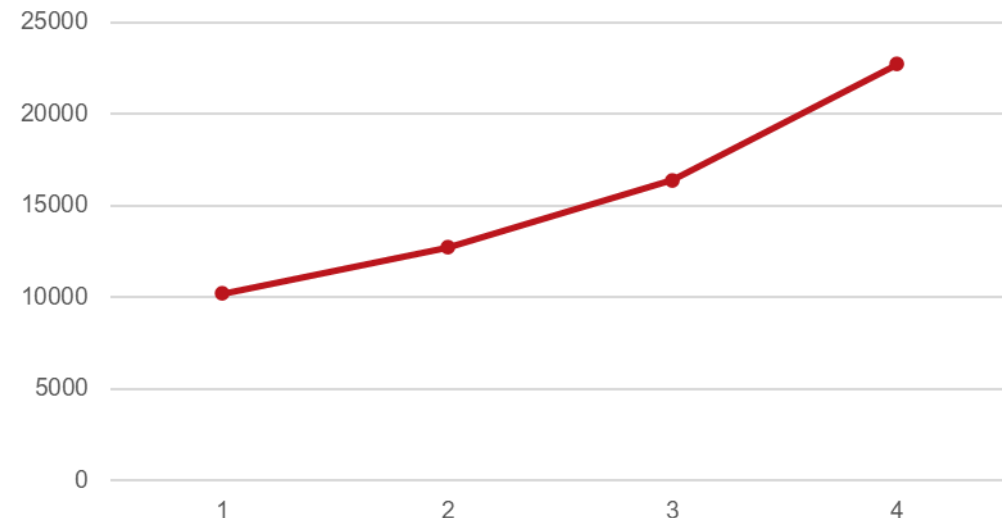
Of 23,876 reports **73%** were female victims



In this period reports of Domestic Abuse increased by **37%**

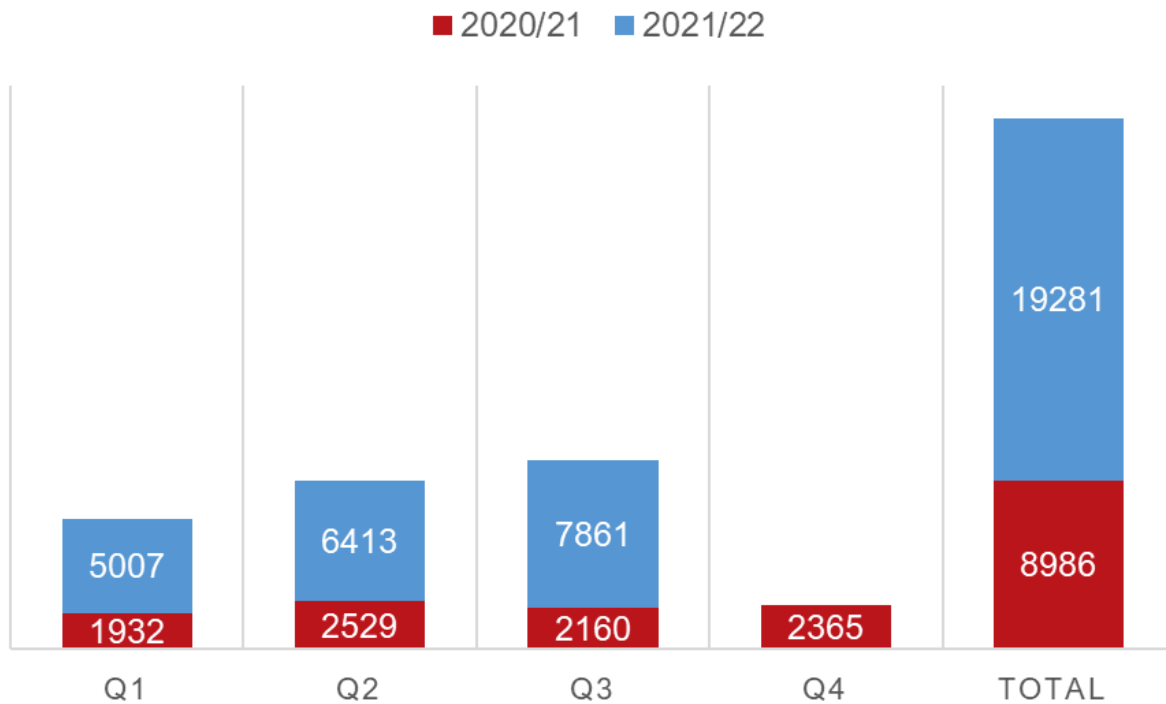


DA reports to Birmingham Police 2017-2020

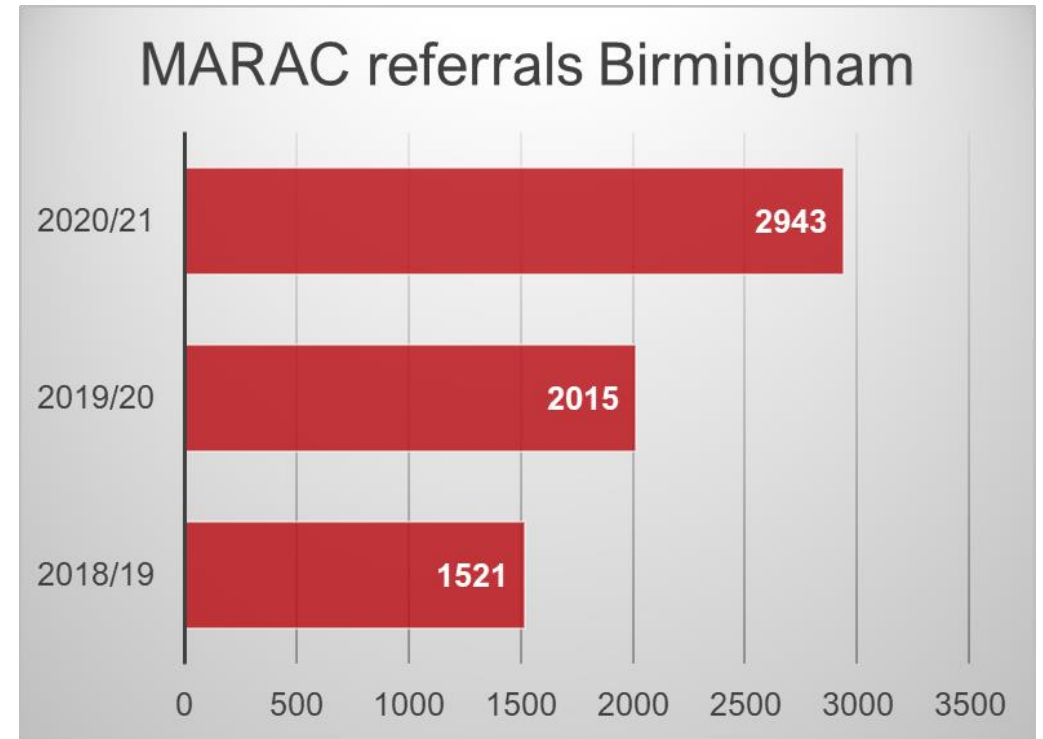


Domestic Abuse in Birmingham

Calls to the Birmingham DA Helpline

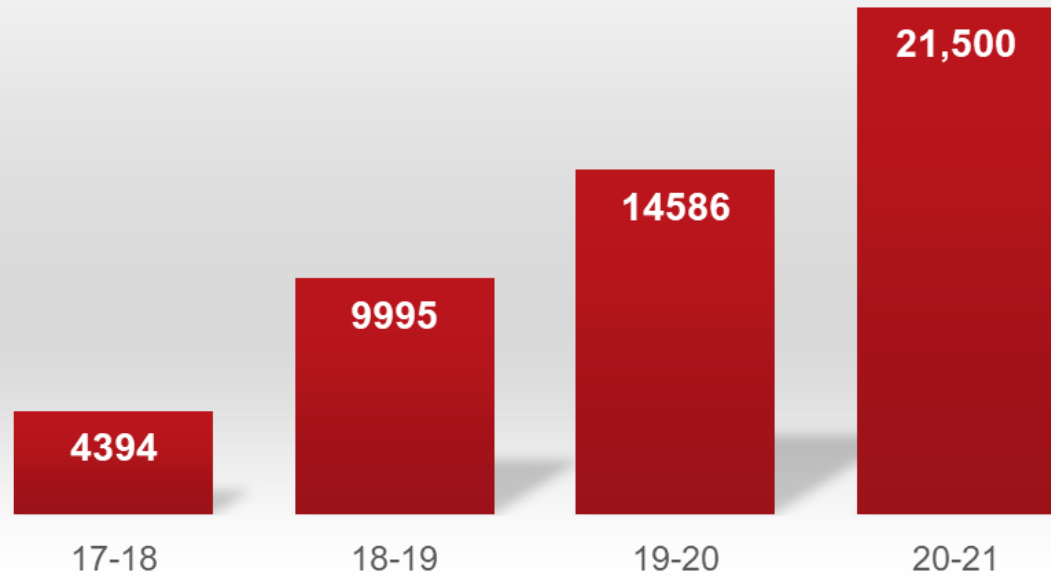


MARAC referrals Birmingham

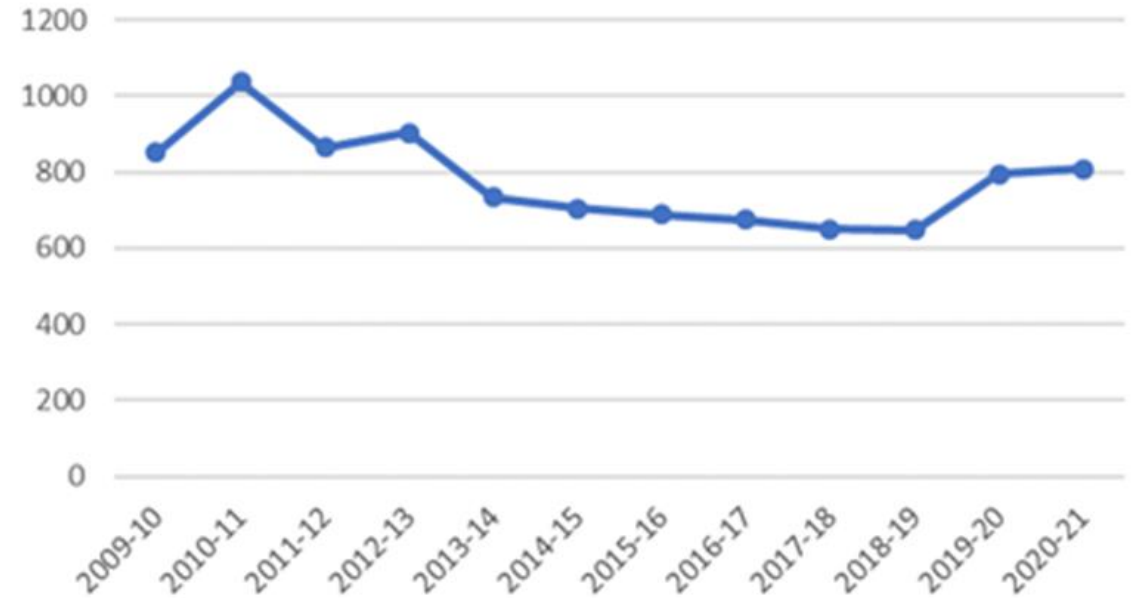


Domestic Abuse in Birmingham

Total number of women accessing community based support services




Homelessness & Domestic Abuse



Adult Social Care Vision: Focus on good outcomes for citizens at the heart of everything that we do

Prevention First



Crisis support

Targeted support

Universal and
Early Help

Resilient citizens, connected to their local
communities

Strength based approaches to social work

Inclusion of the most vulnerable within communities

Effective partnerships through co design and
investment in assets and activities within local areas
to help build stronger, more cohesive communities

Our Vision

Birmingham is a place where domestic abuse is not tolerated; where everyone can expect equality and respect in their relationships, and live free from domestic abuse.

Domestic Abuse Prevention Strategy 2018+

- Outlines a layered **prevention model** focusing on 3 key priorities:
 - Changing Attitudes and Behaviours
 - Early Identification and Early Help
 - Safety and Support
- Follows ASC vision:
 - Universal help
 - Targeted support
 - Crisis support

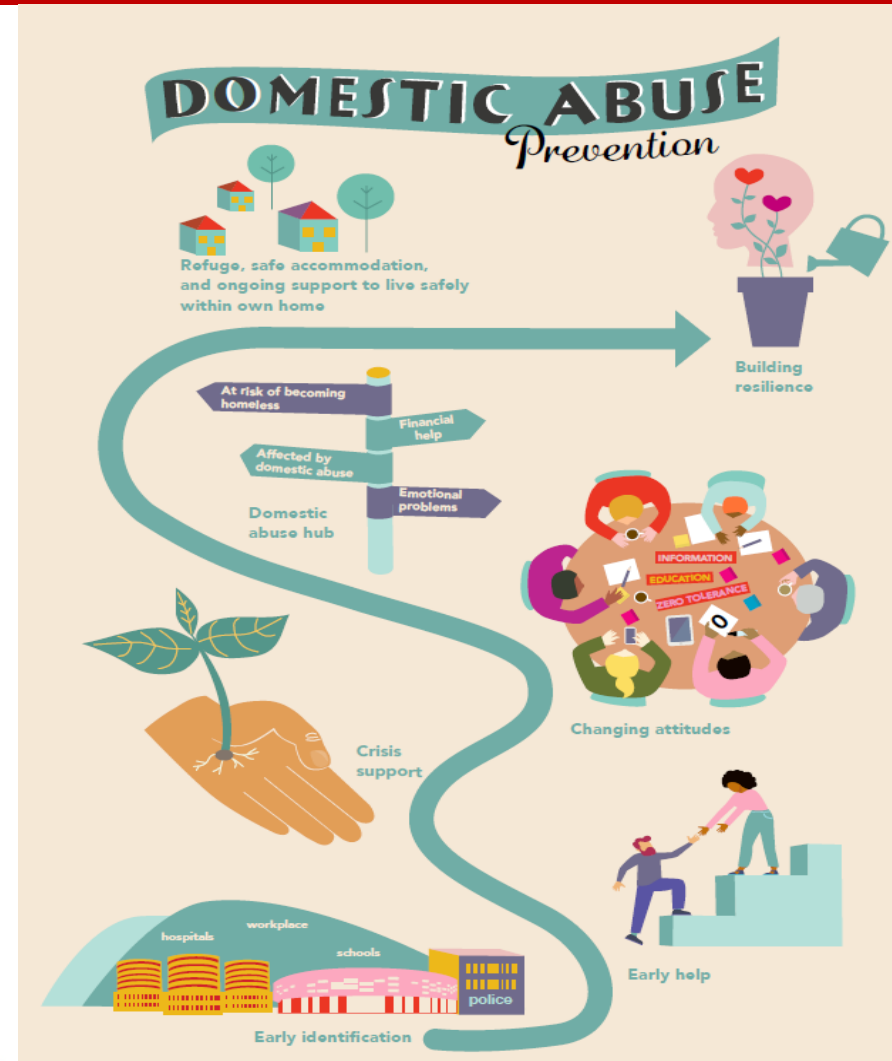
Our new strategy outlines a layered prevention model and focuses on three key priorities:



Domestic Abuse Prevention Strategy: Scope

- Adults, children and young people who are experiencing (or have experienced) domestic abuse
- Those with protected characteristics (Equality Act 2010)
- Those who are perpetrating domestic abuse;
- Children who are exposed to domestic abuse; and
- The general population (for the purposes of prevention more broadly).

Our Domestic Abuse Prevention Pathway



- Development of pathway places victim and their children at its heart.
- Aims to provide specialist support, throughout their journey from early identification and early help, to crisis support and safety planning.
- The prevention pathway sets out the commissioned services- including DA Hub, lead worker, refuge, longer term dispersed accommodation.
- Aim: support victim to understand their options, rebuild their lives safely, recovery and become resilient, after the trauma of domestic abuse.

Part 4 Domestic Abuse Act 2021- Birmingham's Approach

Statutory Duty

- 1. Set up DA Partnership Board** - DA Local Strategic Partnership Shadow Board set up 1 year in advance. Key partners include statutory orgs and specialist DA providers.
- 2. Carry Out Needs Assessment** - Commissioned voluntary sector org, full NA and system mapping of DA across city. Final report end Nov.
- 3. Develop & publish strategies** - Existing DA Prevention Strategy. To be refreshed.
- 4. Meet support needs of victims & children** - Embedded in NA.



Accountability and Reporting

- Via:
- DA Local Strategic Partnership Board
 - Birmingham Community Safety Partnership
 - Health & Wellbeing Board

National Oversight

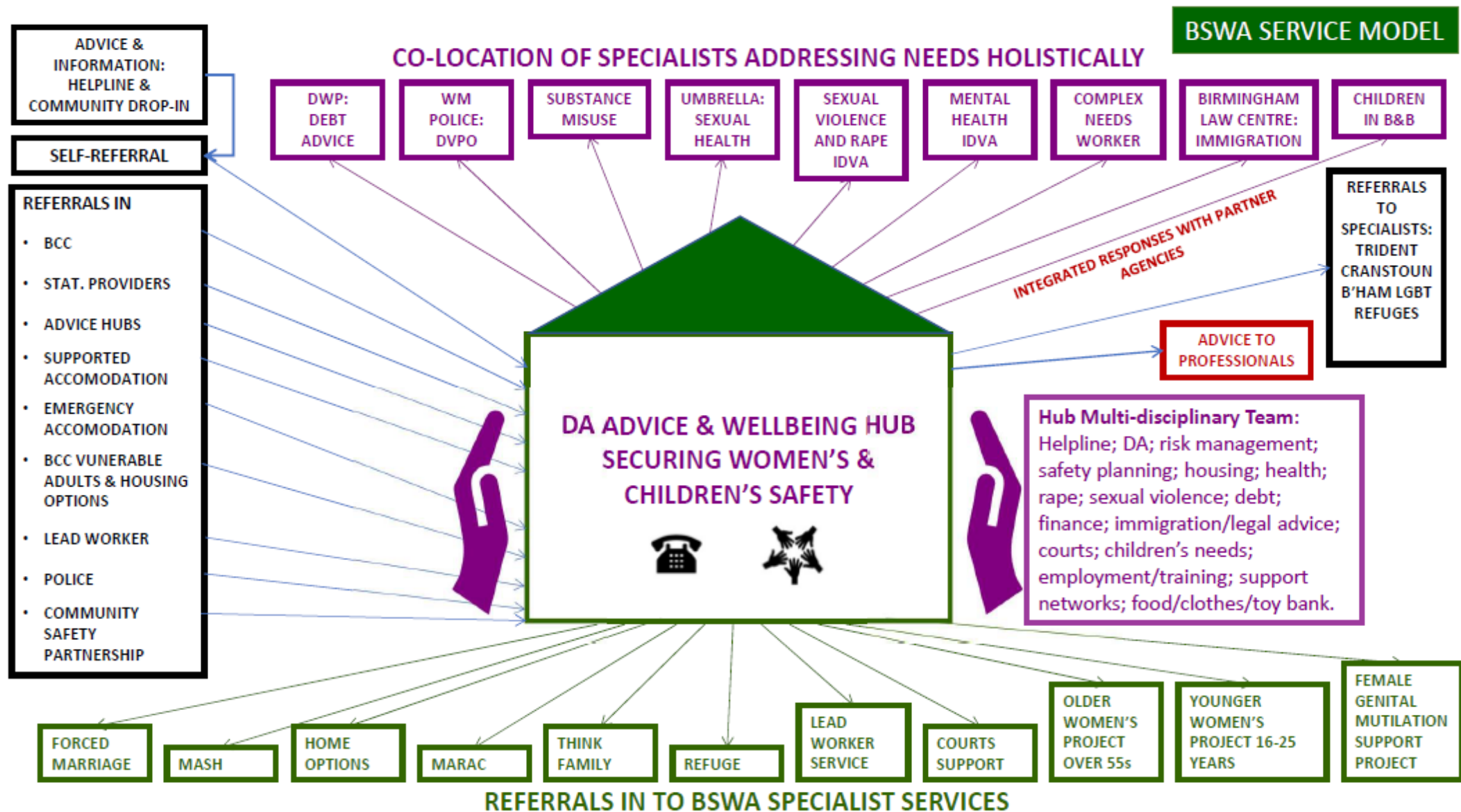
- ### Reporting
- National Steering Group

Part 4 New Duty- Birmingham Update

£3.2m awarded April 21 to discharge new duty

Our Approach to funding	Update
<p>Stage 1 – Immediate Action – to relieve existing pressures</p> <ul style="list-style-type: none">▪ To enhance/gaps support in commissioned DA service▪ To enhance internal delivery in Housing and Birmingham Children’s Trust	<p>Stage 1</p> <p>Contract variations to DA commissioned services to provide additional IDVAS, children’s workers, staff for new refuges, extend helpline, male support worker</p> <p>- £2.1m allocated so far</p>
<p>Stage 2 - In progress</p> <ul style="list-style-type: none">▪ Carry out Needs Assessment, system pathway mapping and strategy review	<p>Stage 2</p> <p>Full Needs Assessment report end Nov</p>
<p>Stage 3 – In progress</p> <ul style="list-style-type: none">▪ Develop Grants prospectus – smaller specialised orgs bid into pot money where identified gaps from needs assessment▪ This will particularly consider victims with protected characteristics	<p>Stage 3</p> <p>Community grants prospectus developed. Focus on:</p> <ul style="list-style-type: none">- Support provision in safe accommodation- Gaps identified from NA- Prevention and Early intervention

Domestic Abuse Wellbeing Hub - Building Recovery into Crisis



A collaborative service underpinned by prioritising women's and children's safety, listening to what they need, making their journey along the pathway as safe and barrier free as possible

An understanding of DA is crucial to creating a safe pathway:

- Women and children come first
- Undoing the perpetrator's work
- Fear of agency involvement
- Independent enough to advocate and build trust
- Children's journeys are central to delivery
- **A focus on early intervention and prevention, but ready for crisis support**
- All of which necessitates close collaboration with partners – fluidity in the pathway and locations

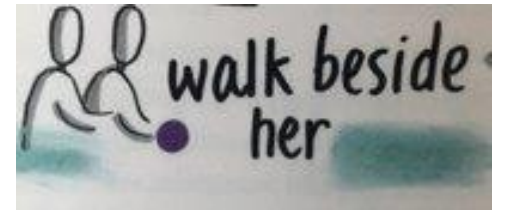


Domestic Abuse Wellbeing Hub Recovery Services

Needs of women and children to be met, to improve their safety and wellbeing.

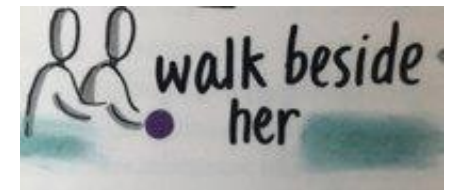
Services within and through the Hub:

- **Safety:** Police and MARAC/DRIVE, DVPO partnership with WMP, solicitor's drop-ins, university pro bono, court IDVA links into Witness Support, BCC Sanctuary worker
- **Children:** BSWA Children's worker , learning support worker linking to education, Early Years IDVAs route into Children's Centres, children's workers in refuges
- **Health and wellbeing:** MIND drop-ins & groups, Mental Health IDVA, Sexual Health IDVA, addiction partnership with Aquarius/CGL, Hospital IDVA's and IRIS programme.



Domestic Abuse Well - being Hub Recovery Services

- **Experiences of DA:** groupwork – e.g. We: Are, Rape and Sexual Violence worker – links to RSVP, established routes to lead workers, FGM/forced marriage team, mini forum, Purple Project, Young Women's Service
- **Safeguarding:** MASH worker/CASS MASH partnership, DVPP, Safeguarding Adults Forum, joint working via health IDVAs
- **Housing:** Work with registered providers, mini forum/refuges, BCC Housing Workers, supporting women in TA/ B&B
- **Finances:** Debt drop-in sessions, DWP drop-in, NRTPF - law centre and Refugee and Migrant centre, Food Banks to supplement our own, basic clothes bank
- **Employability/education:** ESOL support, DWP & volunteering opportunities



Strengthening Equality, Diversity and Inclusion

Current DA Commissioned Services

- Whole life course approach - includes support provision for children, young people, working age adults and older people
- Provide support for both male and female victims in safe accommodation
- Services commissioned on a diversity competence basis, embedding, and mainstreaming an equality and inclusive approach. Enables them to meet needs of super diverse population that exists in Birmingham. (42% of the population from black and minority ethnic communities)
- Commissioned providers employ staff who reflect the communities they support, have multi language skills and in-depth understanding of intersectional needs of these victims

Strengthening Equality, Diversity and Inclusion

Community Grants Prospectus

- Utilise Part 4 funding – prospectus developed that encourages smaller specialist providers to bid in pots money
- Such providers often don't meet council procurement thresholds but provide vital grassroots support to victims
- Often meet needs those with protected characteristics and understand intersectional needs

Safeguarding: Improving Protection and Providing Support



Balwinder Kaur

Assistant Director – Adult Social Care

Lead Responsibility for Safeguarding





Key Points



- Birmingham City Council is committed to eradicating domestic abuse
- Adult Social Care (ASC) Safeguarding commitment to supporting the delivery of the Domestic Abuse Prevention Strategy 2018+
- Role of Social Care in supporting the LA part 4 Duty within the context of increasing demand and current context for social care
- All Social workers to be familiar with the new legislation as it transforms our response to domestic abuse



Some Safeguarding Legislative Tools

- Care Act 2014
- Mental Capacity Act 2005
- Mental Health Act 1983
- Domestic Abuse Act 2021
- Anti-social behavior crime and punishment Act 2014 and other crime related acts
- Housing Acts (various)
- Homelessness Reduction Act 2017
- Care Standards Act 2000
- Human Rights Act 1998
- Court of Protection
- The High Court
- Safeguarding Vulnerable Groups Act 2006
- Public Health Act (various)



Local Approach for Domestic Abuse



- Adult Social Care vision is to deliver good outcomes for citizens, building resilience and independence
- Using a prevention first & strength-based approach to community social work Enables us to do our statutory work whilst also focusing on early support & building resilience, not just focusing on crisis etc
- We have Three Conversations practice model and focus on risk enablement
- Committed BSAB chair on this agenda who was proactively involved in the development of the Domestic Abuse Prevention Strategy 2018+

Bharosa

- Established 1990 as an in-house adult social care provision to support south Asian women
- A bespoke non-directive domestic abuse support service, that works in partnership with other agencies to sensitively support women on their journey towards independence and safety
- Staff team cover a range of south Asian languages and work to support women through domestic abuse where it may be entwined with some cultural norms
- The service provides awareness raising sessions. This includes work with young people to improve their awareness of domestic abuse, recognise abusive relationships and how to keep themselves safe

Local Approach for Domestic Abuse

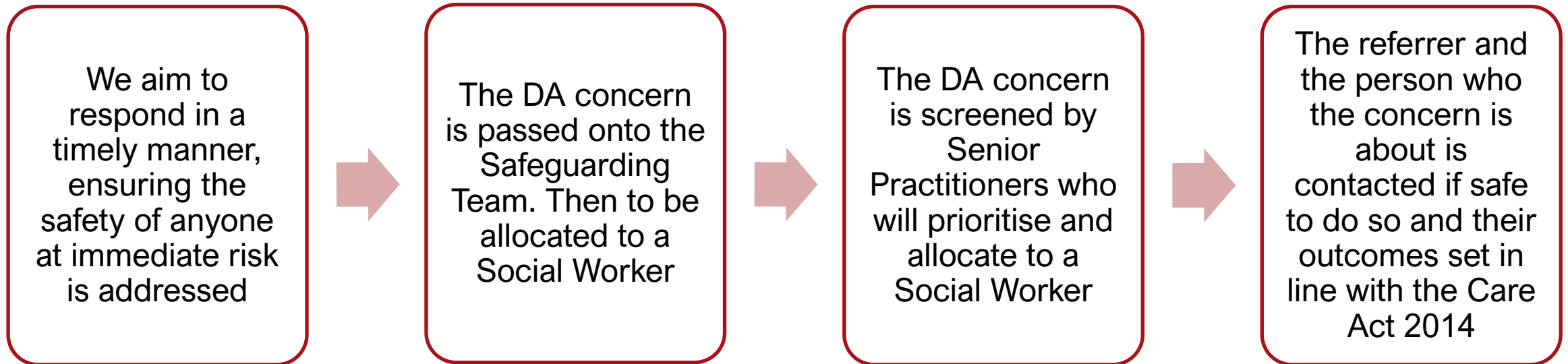
- In order to safeguard and protecting vulnerable adults from Domestic abuse , there is extensive DA training offer in ASC
- **Birmingham Domestic Abuse/Awareness Training** has been delivered predominantly for Adult Social Care Staff, working in Partnership with the Birmingham Safeguarding Adults Board,
- Offering places across the Safeguarding Partnership – 15 sessions in a year

Key learning objectives

- ✓ Review role of 11 support agencies endorsed by west Midlands police
- ✓ Key learning from the Birmingham Domestic Abuse Prevention Strategy
- ✓ Explore Impact of Domestic Abuse on individuals and the support role of Social Workers
- ✓ Review the impact of Governance and Accountability on domestic abuse

Local Operational Process

- Domestic abuse cases that come through via Adult Social Care Contact Centre are taken seriously
- Since the pandemic (Covid) there has been a sharp rise in domestic abuse cases in Birmingham



Local Operational Process

If the person does not have Care and Support needs; and are able to protect themselves from abuse and neglect then they would not meet the threshold for a Section 42 Enquiry in such instances but ASC still have a duty to care



This duty is fulfilled by signposting to other agencies such as Women's Aid, Police, Health and Children's Advisory Support Services (if there are any children involved)



This enables agencies to work with the person to look at preventative measures. Individuals need a safe space to disclose the abuse, therefore housing can play an important part to enable the person to be moved to a place of safety



Where a person does have Care and Support needs and are not able to protect themselves from abuse and neglect, ASC Safeguarding Team will carry out a Section 42 Enquiry

Working with Partners- MARAC



- One of the six principles of Safeguarding
- ASC will complete a MARAC (Multi Agency Risk Assessment Conference) and DASH (Domestic Abuse, Stalking and Honour Based Violence) form and send referral to MARAC Referrals
- MARAC is a one-off discussion; case is not re-visited unless a repeated incident has occurred
- If the person is high risk, consent is overridden
- ASC will still put in referral to say whether the person wanted the police involved or not in case of repercussions

Local Approach for Domestic Abuse

- ASC have committed in supporting MARAC
- 2 Safeguarding Improvement Officers (SGIO) completing daily MARAC checks to ascertain if the person is known to our service
- If known and allocated to a Social Worker, then the allocated Social Worker will be requested to attend the MARAC hearing on the day the case is being heard
- The Social Worker will provide feedback on their Involvement with the person
- If there is no Social Worker involved with the person then the SGIO will provide feedback to MARAC if the person is known to our service
- Feedback will enable a joint approach to support the person to address the risk of harm

Operational Process

- Following the hearing MARAC will set actions for agencies to complete
- The actions ASC are set will be completed by the SGIO. If there is an allocated Social Worker, then the SGIO will notify the Social Worker
- The minutes from the meeting are uploaded onto ASC system
- An example of actions set by MARAC can be for ASC to set a professionals meeting, make referral to another agency who knows the person well, to do a safe and well visit with the police
- The actions vary case by case. It is the responsibility of the agency who has actions against their name to complete action for their organisation

A focus on Prevention Pathways & Early Interventions

- ASC will always work with partner agencies to achieve the best outcomes for individuals
- Consideration will be given to all forms of abuse when working with the person such as psychological, financial, sexual abuse as these can/may overlap
- Having open and honest conversations with the person which will form part of the risk assessment
- Work with partner agencies will look at safety planning measures e.g., if a person decides to return to source of risk
- The persons emotional wellbeing and protective measures will be considered to minimise the risk
- A commitment to ensuring that people with care and support needs can protect themselves from abuse if they are able to do so, if that is not possible, consider support option which could be put in place to support the person
- Always taking an empowering approach by letting individuals make choices about their own lives.

Questions

