



Lincolnshire

Wildlife Trust

Harnessing Communities in Nature's Recovery

Tammy Marie Smalley
Head of Conservation

8 Dec 2021



Nature conservation from the Humber to the Wash



Who am I?

- Started in this role in November 2016
- 7 years Natural England national marine
- 7 years Wash Estuary Project Officer covering the Fens for local authorities
- Environmental consultant
- Worked in farming & tourism
- Yellowbelly





Who is LWT?

- Membership based charity
- 25,000+ members
- ~100 nature reserves
- ~ 70 staff
- Volunteer organisation
- One of 46 UK WTs & 1 national
- 850,000+ members
- 45,000+ volunteers





Lincolnshire

Wildlife Trust

LWT's Vision

A thriving natural world,
with our wildlife and habitats playing a valued role in
addressing the climate and ecological emergencies,

and people inspired and empowered to take action for nature





Lincolnshire

Wildlife Trust

LWT's Purpose

Our purpose is to bring wildlife back, to empower people to take action for nature, and to create a society where nature matters



Nature conservation from the Humber to the Wash



Lincolnshire
Wildlife Trust

Wild Lincolnshire





Lincolnshire

Wildlife Trust

Empowering people since the beginning



Nature conservation from the Humber to the Wash



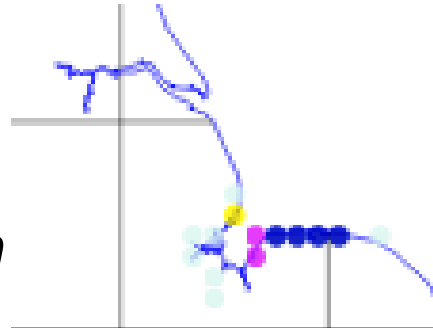
Our needs today?





Our needs today?

- Matted sea lavender: *Limonium bellidifolium*



- ‘...where the Sheep bite close’ Sir Joseph Banks’s own words





Our needs today?





Starting with verges



1966 – A scheme to protect road verges is established; the first of its kind in Britain with the local highways authority. Still in place today....BUT





Roadside Nature Reserves



80km of grassland protected. Monitored and managed by Wayside Volunteer Wardens with funds from Lincolnshire County Council.
BUT were they best or only ones....?





Verge review



Lost over 97% of our wildflower-rich grassland since the 1930s. Verge vestiges?

Trained 250 volunteers to undertake surveys, which occurred through 2009-2016





Verge review



As a result, 165 roadside verges along 300km of road verge were designated as Local Wildlife Sites, accounting for nearly 100ha of wildflower-rich habitat

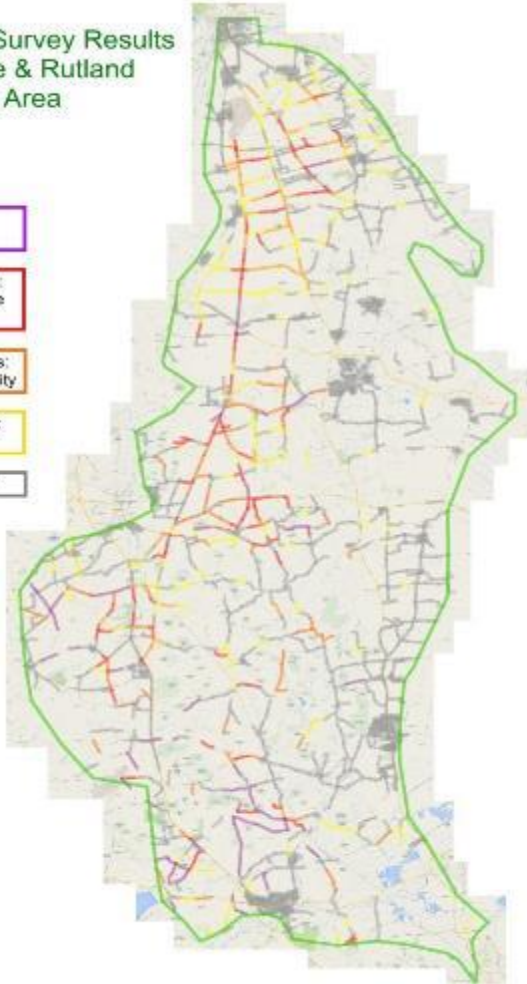




Life on the Verge

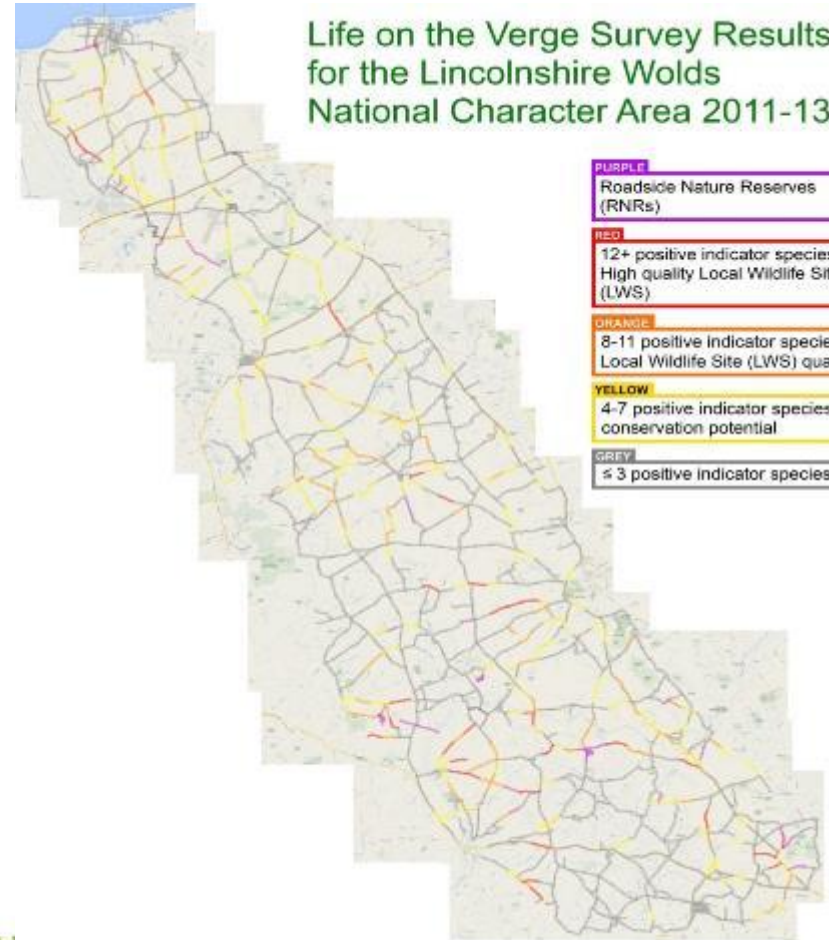
Life on the Verge Survey Results for the Lincolnshire & Rutland Limestone Natural Area 2009-13

- PURPLE**
Roadside Nature Reserves (RNRs)
- RED**
12+ positive indicator species: High quality Local Wildlife Site (LWS)
- ORANGE**
8-11 positive indicator species: Local Wildlife Site (LWS) quality
- YELLOW**
4-7 positive indicator species: conservation potential
- GREY**
≤ 3 positive indicator species



Life on the Verge Survey Results for the Lincolnshire Wolds National Character Area 2011-13

- PURPLE**
Roadside Nature Reserves (RNRs)
- RED**
12+ positive indicator species: High quality Local Wildlife Site (LWS)
- ORANGE**
8-11 positive indicator species: Local Wildlife Site (LWS) quality
- YELLOW**
4-7 positive indicator species: conservation potential
- GREY**
≤ 3 positive indicator species





Lincolnshire

Wildlife Trust

And now....



#LoveLincsPlants



Made possible with



**Heritage
Fund**



Nature conservation from the Humber to the Wash



Purpose of Project

- To conserve the historic herbarium of Lincolnshire
- To establish a contemporary herbarium
- To find the next generation of botanists
- To get people excited about the flora of Lincolnshire
- To capture inspirational stories of Lincolnshire's plants and people, demonstrate Lincolnshire's habitats and start a seed bank of Lincolnshire plants





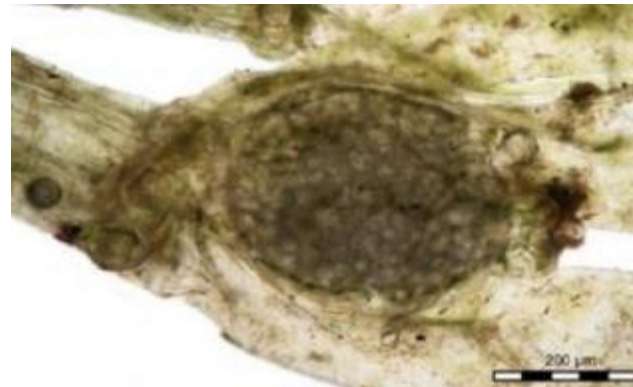
Lincolnshire

Wildlife Trust



Historic herbarium

9000+ specimens



Nature conservation from the Humber to the Wash



Contemporary herbarium

- 1200+ new specimens in both herbaria
- Over 300 volunteer plant collection days
- Over 200 volunteer herbarium mounting and curation days



Next generation

250+ 18-35 year olds



Next generation

- 7,800 primary
- 1,025 at our centres
- Over 100 Wildlife Watch
- 800+ GCSE/ A-Level
- Online resources for teachers & home-schoolers
- BSc Conservation & Ecology at University of Lincoln
- Student Placements





Lincolnshire

Wildlife Trust

Inspiring people 100 + public events



JOSHUA AJOWELE

*MSc. Plant Diversity (University of Reading),
BSc. Plant Science (Olabisi Onabanjo
University), Felix Scholar 2019/2020*



IAN JACKSON

*Senior Lecturer in Pharmacology & Therapeutics
College of Science, University of Lincoln
Medical School*



Nature conservation from the Humber to the Wash



Celebrating Lincolnshire's Plants



Common Dog violet *Viola christinae*

Botany

The common dog violet is a perennial herbaceous plant of the Violaceae family. It is a small plant with a basal rosette of leaves and a single upright stem bearing a single bell-shaped flower. The flowers are purple with a white throat and a yellow center. The leaves are heart-shaped with a serrated margin. The plant is native to Lincolnshire and is found in damp grasslands and meadows.

DEFINING BIODIVERSITY

Biodiversity is the variety of life in the world or in a particular habitat or ecosystem. It includes the diversity of species, genetic diversity, and ecosystem diversity. Biodiversity is important for the health of ecosystems and for the well-being of humans. It provides a range of ecosystem services, such as pollination, water purification, and climate regulation.

Did you know?

The common dog violet is a protected species in Lincolnshire. It is listed in the Lincolnshire Biodiversity Action Plan. The plant is also featured in the 'Love Lincs Plants' project, which aims to raise awareness of the county's native plants and to encourage their conservation.





Now and next





Lincolnshire

Wildlife Trust

I am and will be
Tammy of Greater Lincolnshire
of The Wash, the Wolds & the Fens

Inspired by Nature
Willing to stand up for Nature

Stand with me for Nature's Recovery,
Building our knowledge, Moving towards Net Zero,
Inspiring those after us to do better



Nature conservation from the Humber to the Wash



Lincolnshire

Wildlife Trust

Email: tsmallley@lincstrust.co.uk

Mob: 07867 793111

Thank you for listening

Images c/o: NHM, #LoveLincsPlants & LWT photographers



Nature conservation from the Humber to the Wash