

DEVELOPING NEW AVENUES TO BETTER ENGAGE WITH COMMUNITIES

Justin Griggs

Head of policy and communications





**Feelín' the Love
for #LocalGov**



erry Baskin



Peter Moore



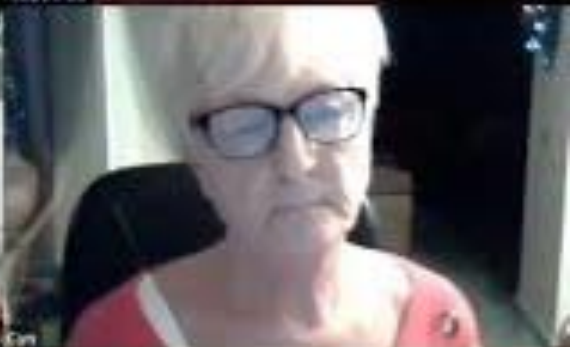
Alex's Pad



Julie's I pad



Jackie Weaver



Con



The Guardian





W. BLACEMAN. G. WALLER. J. JONES. C. J. MORGAN, Vice-Chairman. F. C. CAPEL, Chairman. H. V. H. COWELL. C. HIND. E. L. TURNER, (Clerk). H. L. HUXLEY. G. G. BROWN.

The First Parish Council of Wilmington, 1895.



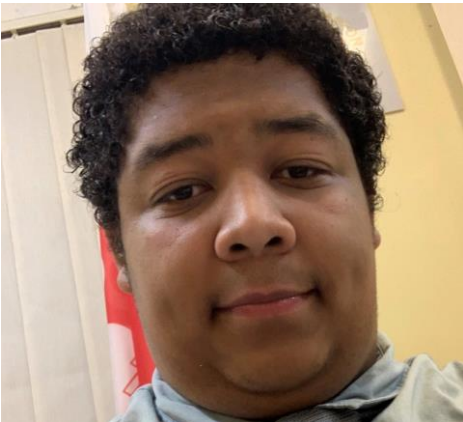
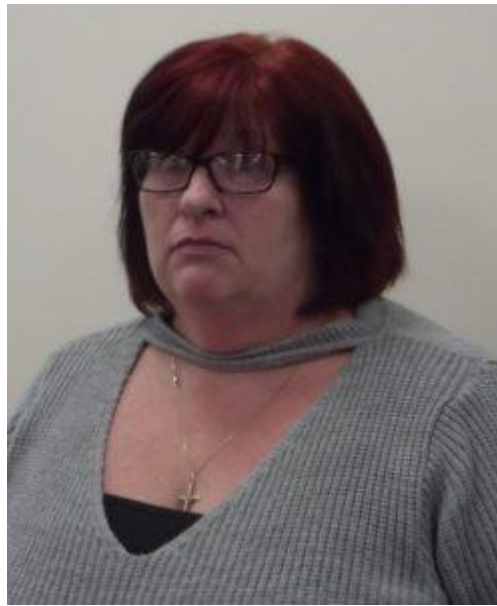
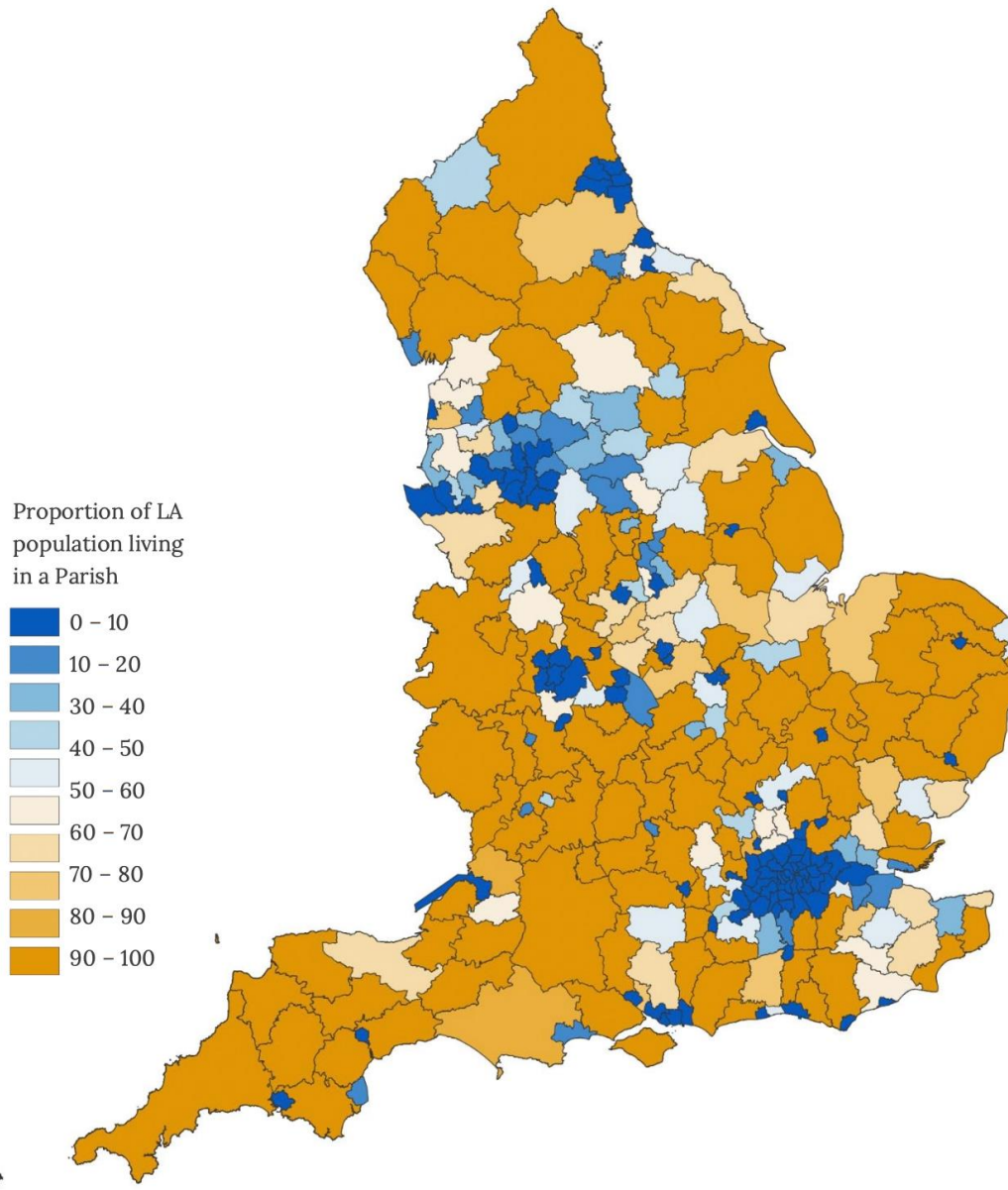


Figure 1: Proportion of local authority population living in a parish.

Source: ONS, Onward analysis



THE FIRST TIER OF LOCAL GOVERNMENT IN ENGLAND

- 10,000 local (parish and town) councils
- Two thirds of the country, one third of the population
- Country and coastal, town and city
- Democratic voice: 100,000 councillors (15 million hours a year)
- Legal structure: limited duties, extensive discretionary powers
- Allotments, burial grounds and community centres to climate emergency, health and well being, housing and young people
- Power to precept (small share of council tax): £618 million, £71 Band D
- Working with local partners and other agencies

ENGAGING WITH COMMUNITIES TO MAKE A CHANGE

“Councils have statutory requirements to consult with their populations on many occasions when making decisions that will affect the community”

- Traditional: physical meetings, annual meeting (citizens assembly), notice boards, newsletters, councillor surgeries/drop-ins, surveys
- Digital: remote meetings, websites, social media, surveys and polls
- Participative: budgeting, neighbourhood planning, polls/referenda and youth councils, climate action
- Social: community events (fetes, festivals, litter picks, tree-planting, Platinum Jubilee, Big Lunch)

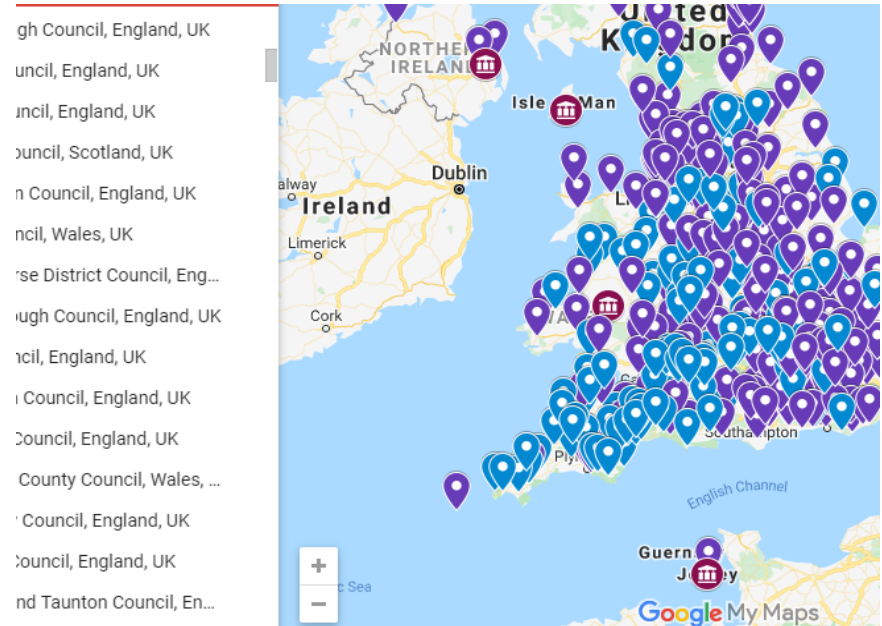
ENGAGING WITH COMMUNITIES TO DELIVER BELONGING AND COMMUNITY STRENGTH

“Fully parished areas score higher in numerous Social Fabric Index elements than fully unparished ”

- Volunteering and group membership: proportion of people who volunteer or members of a local association
- Community assets: rates of assets community owned or designated as having community value
- Socialising and leisure: proportion of people satisfied with leisure time or regularly spend time with family/friends
- Local business: rates of independent businesses
- Local assets: rates of assets such as libraries, banks and pubs
- Open/public spaces: green spaces, allotments, sports fields
- Political engagement: turnout in local elections
- Charitable activity: charities per capita and Gift Aid

MAKE A CLIMATE CHANGE

- Local councils can include sustainable policy through:
 - Council decisions (tree planting, rewilding green spaces)
 - Projects (carbon neutral targets, solar panels, funded projects)
 - the neighbourhood plan (housing and services)
 - Transport strategy (buses, walking and cycle paths)
 - Changing hearts and minds of residents (community engagement)
 - 38% declared a climate emergency, two thirds need support



TOPICS

Carbon and plastic reduction

Designing greener housing

Electric charging points

Energy

Green recovery

Green travel

How to declare a climate emergency

Trees and tree management

Trusted companies and funding

MAKE A CLIMATE CHANGE

- December 2018 [Frome Town Council](#) [declared a climate emergency](#) and committed to going carbon neutral by 2030
- Solar funding project helps residents install solar panels at a significantly discounted rate
- Hosted climate change talks for other local councils
- Created climate emergency paper, shared for other councils to follow
- Promotes green transport such as electric vehicles, car sharing, public transport, cycling, walking
- Sharing hub for household items, community fridge to reduce waste
- Looking into a council owned wind turbine



Local service delivery and place-shaping: A framework to support parish and town councils



This document presents a framework for principal councils looking to support parish and town (local) councils to play an increased role in local service delivery and place-shaping. While it is aimed at principal councils, the research has also been steered by interviews and discussion with representatives of the local council sector.

Devolution | 11 Aug 2021 | LGA | 27.5

Executive summary

- Introduction
- Why the focus on town and parish councils?
- The role of town and parish councils today
- The need for a framework

Executive summary

Town and parish (local) councils can be an integral part of vibrant communities, along with voluntary and other community sector organisations. However, harnessing this potential is difficult. Town and parish councils have a wide range of powers, but limited duties. They also vary greatly. Size, capacity and appetite are different from local council to local council. Many parishes are small, with a part-time clerk and have little in common with the largest and most active town councils. This means that the roles they undertake reflect their local appetite and capacity. Even in neighbouring parishes, individual councils may choose very different roles.

**YOUR LOCAL
COUNCIL NEEDS YOU!**
MAKE A CHANGE
BECOME A COUNCILLOR



POWER TO THE PEOPLE

JOHN LENNON / PLASTIC ONO BAND



APPLE RECORDS
1970

THANK YOU

WWW.NALC.GOV.UK

JUSTIN.GRIGGS@NALC.GOV.UK

[@JUSTINGRIGGS @NALC](#)