

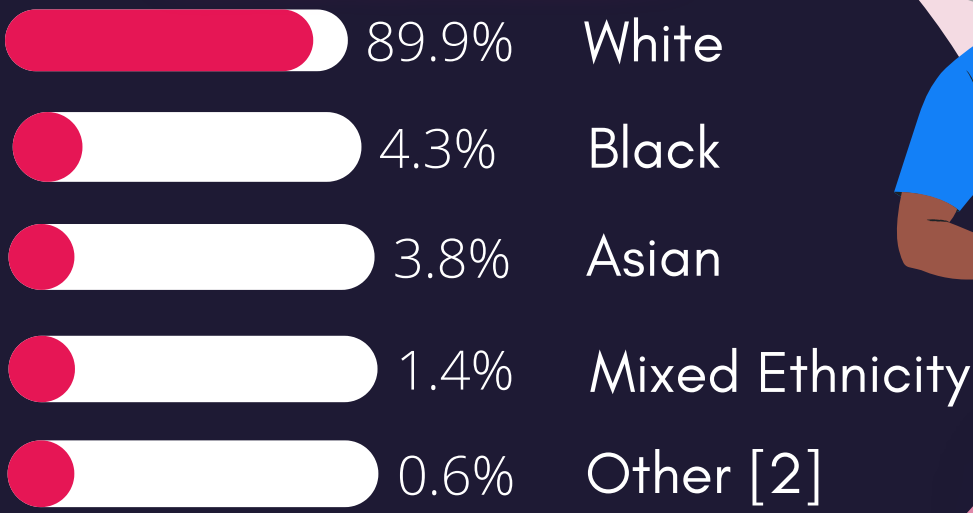
## HR & Employment

The NHS employed an estimated 1.85 million people in June 2021, an increase of 5,000 (0.3%) compared with March 2021 and an increase of 63,000 (3.5%) compared with June 2020 [1]

There were an estimated 5.68 million employees in the public sector for June 2021, an increase of 131,000 (2.4%) compared with June 2020. [1]

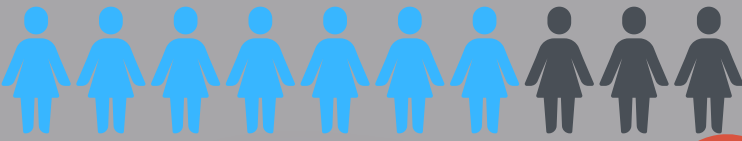
Since 2010, the public sector workforce has dropped by 7%. [1]

### EMPLOYEE ETHNICITY



78%

Recruitment and retention issues are experienced by 78% of councils [2]



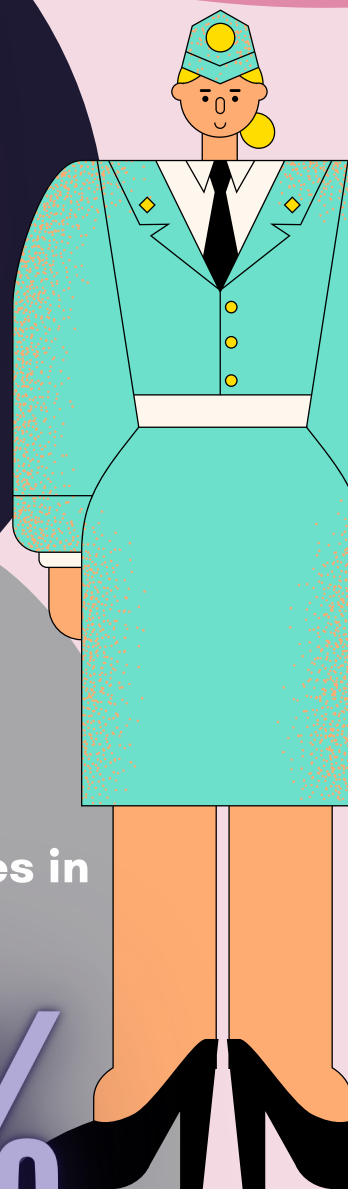
Only

7%

of firefighters are female [2]



61% of police officers are female [2]



The public sector receives amongst the lowest average applications per job of any industry, with an average of just 2 applications per job from August to September. [3]

The amount of registered nurses in the UK is down

30%

since 2012/13 [2]

