

Working in partnership to identify the needs of children with SEND and their Families

Pam Robertson (Strategic Lead for SEND, Together for Children)

Introduction

- What is co-production?
- Co-production at the level of the Child / Young person (CYP)
- Co-production with stakeholders
- Co-production at the strategic level
- Implications of SEND Green Paper



What is co- production in legislation?

An approach to working in partnership with families and young people defined in law within The Children's and Families Act (2014)

[Local Authorities] , must have regard to the importance of children and young people, and their parents and carers, participating as fully as possible in decisions about their individual care. Local authorities must also ensure that children, young people, parents and carers are involved in decisions about local provision. (Section 19 Children and Families Act)

What is co-
production
not?

Discussion

Consultation

Seeking
feedback

Easy!

A definition of co-production as working methodology

Child / young person, their parents and/or carers and practitioners from multiple agencies all working together as **equal partners to design, plan, deliver and review** support and services in order to achieve shared outcomes (SEND CoP 2015)



Co-production at the level of the CYP

In its truest form this is delivered by a total commitment to person-centred planning

EHCPs (and SEN Support Plans) are jointly produced between CYP, parents / carers, LA and Practitioners

In a SEND system characterised by funding challenges and a lack of capacity this has proven a very difficult aspiration to achieve

Positives steps towards co- production at the level of the CYP

CYP & their parents / carers are fully involved in review of SEN support plans with a shared understanding of when it might be necessary to progress to Statutory Assessment

There are easy and accessible ways for CYP & their parents / carers to contribute their views to an assessment process (including those who use non-traditional communication means)

Views of CYP / parents / carers submitted as part of the assessment or Review process carry the same weight as practitioners

Positives steps towards co-production at the level of the CYP

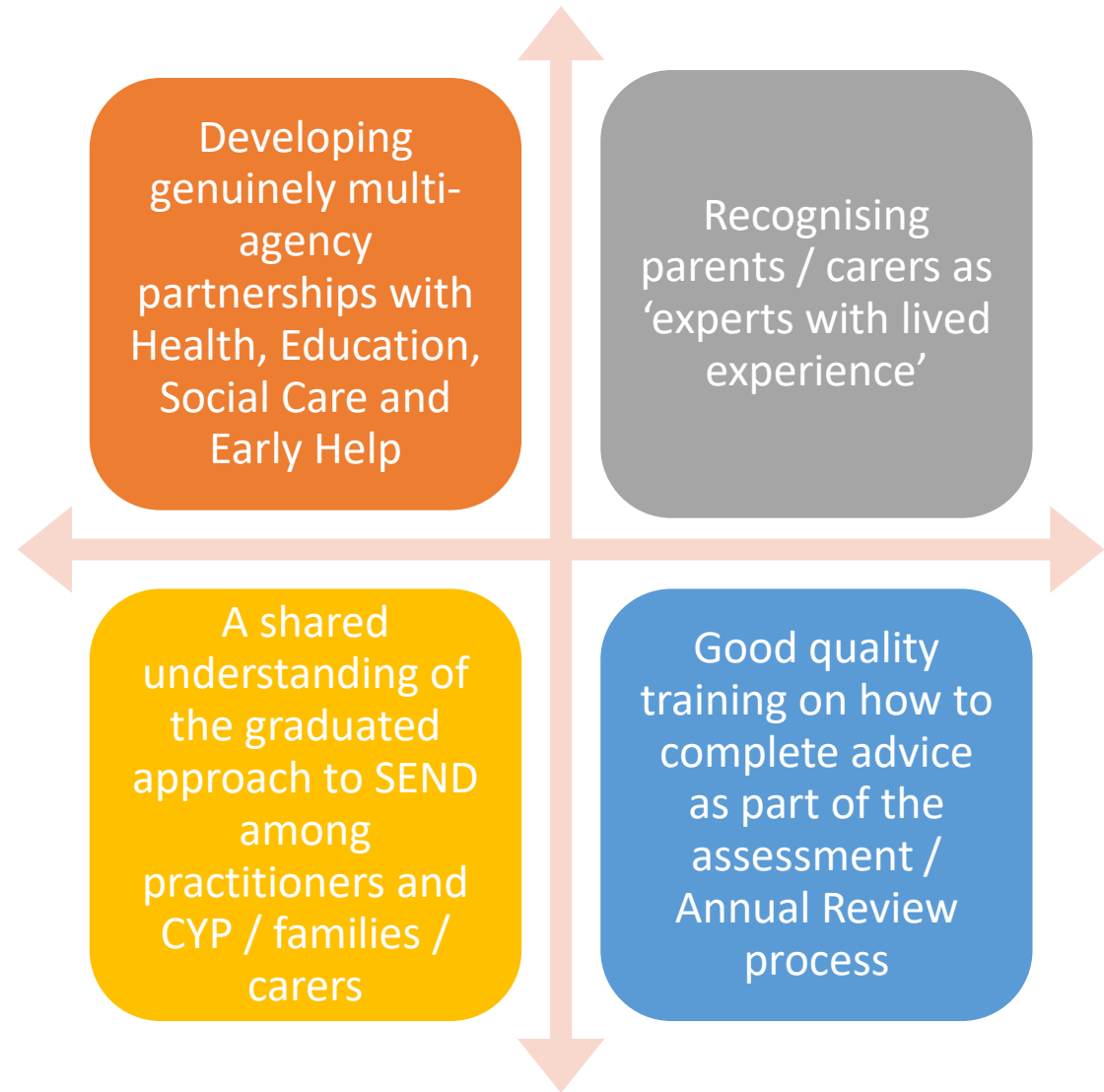
Where there are differences in opinion these are discussed in a fair, open and transparent way at the earliest possible stage

Clear, accessible information is available to CYP parents / carers, including options such as use of personal budgets

The use of independent advice is actively promoted and SENDIASS services are accessible and proactive in their support to families

Mediation is conducted in an open-minded, solution focused manner with honesty and integrity

Co-production
with
stakeholders
(*practitioners
not
professionals*)



Co-production at the Strategic Level

Co-production needs to become an embedded way of working across all layers of decision making. This is central to strong SEND governance arrangements

Need to develop creative ways to include parents / carers and young people. This will mean adapting timings and ways of meeting to make decisions

Understanding the difference between co-production and consultation, always aspiring to the former not the latter

Lessons from COVID

Technology can be a positive for co-production but there is still a need for face to face discussion

The importance of maintaining personal contact with families cannot be underestimated

COVID recovery work will need to be a proactive and sustained process requiring collaboration between services and appropriate funding

Parent Carer Forums have proved their central role in sharing families' experiences and giving a voice to families during COVID

Some key developments from Together for Children in Sunderland

Co-production within re-design of Neurodevelopment Pathways

Digital developments: parent and young person portal, Mind of My Own, Purple Book (in conjunction with NHS England and Microsoft)

A revised SEND Governance structure with full participation from Parent Carer Forum at all levels

Young people as active members of our Preparation for Adulthood group

Looking ahead SEND Green paper: Impact on Governance arrangements

- Stronger statutory regulation of Local SEND Partnership arrangements, including ICS (Integrated Care Systems) which were (formerly known as CCGs)
- Established by Local Authorities including a wide range of stakeholders partnership arrangements will be:

responsible for working with parents and carers to carry out an assessment of need and existing provision across their local area, capturing the prevalence of different types of need locally, and the range of provision that will need to be available locally to effectively meet those needs (chapter 2, section 8).

- In conjunction with parents / carers **local inclusion plans** will be produced

Looking
ahead SEND
Green paper:
Impact on
dispute
resolution



Mandatory
engagement in
mediation



Potential introduction of a
decision review mechanism by
a multi-agency panel (with
powers to overturn decisions)

Looking ahead SEND Green paper: Impact on naming schools

Parents / carers will be given a tailored list of potential provision based on the local inclusion plan, which may include out of area placements

Local Authorities will allocate the first available place in order of the parents' or carers' preference and this school will be named in the child's EHCP

Potentially strengthening of the 'duty to admit' for Academies as a 'back stop' position



Questions
