



Breaking down barriers & building trust

# Gypsies and Travellers and the Police

Traveller Movement - National survey in 2017 on relationships between the Police and the GRT communities.

TM surveyed 17 Police Officers and 14 GRT community members across five Police forces.

The outcome suggested that although some improvements have been made over recent years in this relationship, there are areas for improvement.

Where the Police perceived they can be relied on when the GRT community need them this was disagreed by the communities.

Police strongly agreed that they treat the GRT community fairly. This was strongly disagreed by the Communities.



ROAD > /leɪn  
countryside  
★ **language**  
tem of communicati  
making signs in a  
or anyone the  
used in particular  
guage o [C] An  
six forei



# Travellers murdered pensioners after breaking into their homes

Amos Wilsher his younger brother Jason Wilsher now face long jail sentences

SHARE



COMMENTS

By [Tom Mack](#) Senior Reporter  
15:00, 21 FEB 2022

NEWS

▶ Enter your **postcode** for **local news** and **info**

Enter your postcode

Go

In **YourArea**

# Two brothers found guilty over savage murder of pensioners in their own homes

Mr Gumbley died in December 2017, three weeks after being punched and kicked at his home in Endwood Drive, Little Aston, near Sutton Coldfield.

SHARE



By [James Rodger](#) Content Editor  
13:49, 21 FEB 2022 | **UPDATED** 13:51, 21 FEB 2022

BLACK COUNTRY

# Police urged to take action after 'up to 70 mourners' go to funeral

'We cannot have one rule for one and one rule for another'

SHARE     COMMENTS

By [Adrian Troughton](#)  
04:00, 17 NOV 2020

NEWS

▶ Enter your **postcode** for local news and info

Enter your postcode

Go

In    YourArea



## People line streets in touching tribute to former village chip shop owner

'He was a legend'

SHARE     COMMENTS

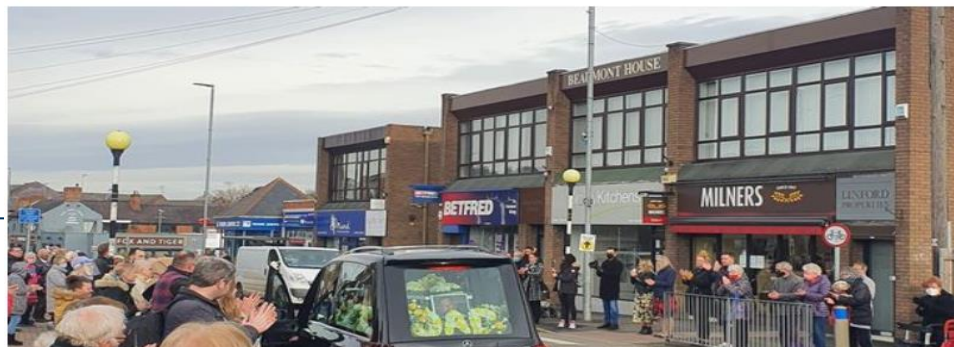
By [Chris Jones](#)  
19:15, 17 NOV 2020 | UPDATED 19:47, 17 NOV 2020

N

▶ Enter your **postcode** for local news and info

Enter your postcode

In    Go



# Multi-Agency Travellers Unit

Leicestershire and Leicester City Multi Agency Travellers Unit

+13 years

Police Officer embed – longstanding since creation.

It exists to provide a one stop point of access for the public, business, agencies and Travellers.

Among its aims are minimising conflict, enhancing quality of life, and providing access to health and education services, through the consistent application of best practice, legislation and guidance.

Stand alone premises.

# Neighbourhood Policing



## Multi-Agency Approach – Leicestershire Project

### **Vision Statement**

Our vision is to improve outcomes for GRT Communities on certain identified caravan sites, enhancing quality of life for the community and allowing children to develop to their full potential. Enjoying healthy respectful relationships with other communities whilst appreciating their distinct cultures and traditions.

## Project Objectives

- Reduce and manage vulnerability
- Reduce offending/re-offending
- Improve educational commitment
- Increase public confidence
- Maximise local authority compliance
- Increase youth engagement/diversion
- Improve health outcomes

# Multi Agency Travellers Unit - Contacts

Mat Bagley, Service Manager

Telephone: 0116 305 8156, mobile: 0781 801 4574

[MultiAgencyTravellersUnit@leics.gov.uk](mailto:MultiAgencyTravellersUnit@leics.gov.uk)

Sharon Holland, Travellers Liaison Officer

Telephone: 0116 305 5420, mobile: 0753 471 3658

Sgt Neil Whittle, Police Officer

Mobile: 0797 083 8745

[Neil.Whittle@leics.police.uk](mailto:Neil.Whittle@leics.police.uk)

Multi Agency Travellers Unit  
Leicestershire County Council  
Beaumont Lodge  
Astill Lodge Road  
Leicester  
LE4 1EF