

PHOENIX FUTURES

Improving access to
substance treatment for
homeless people

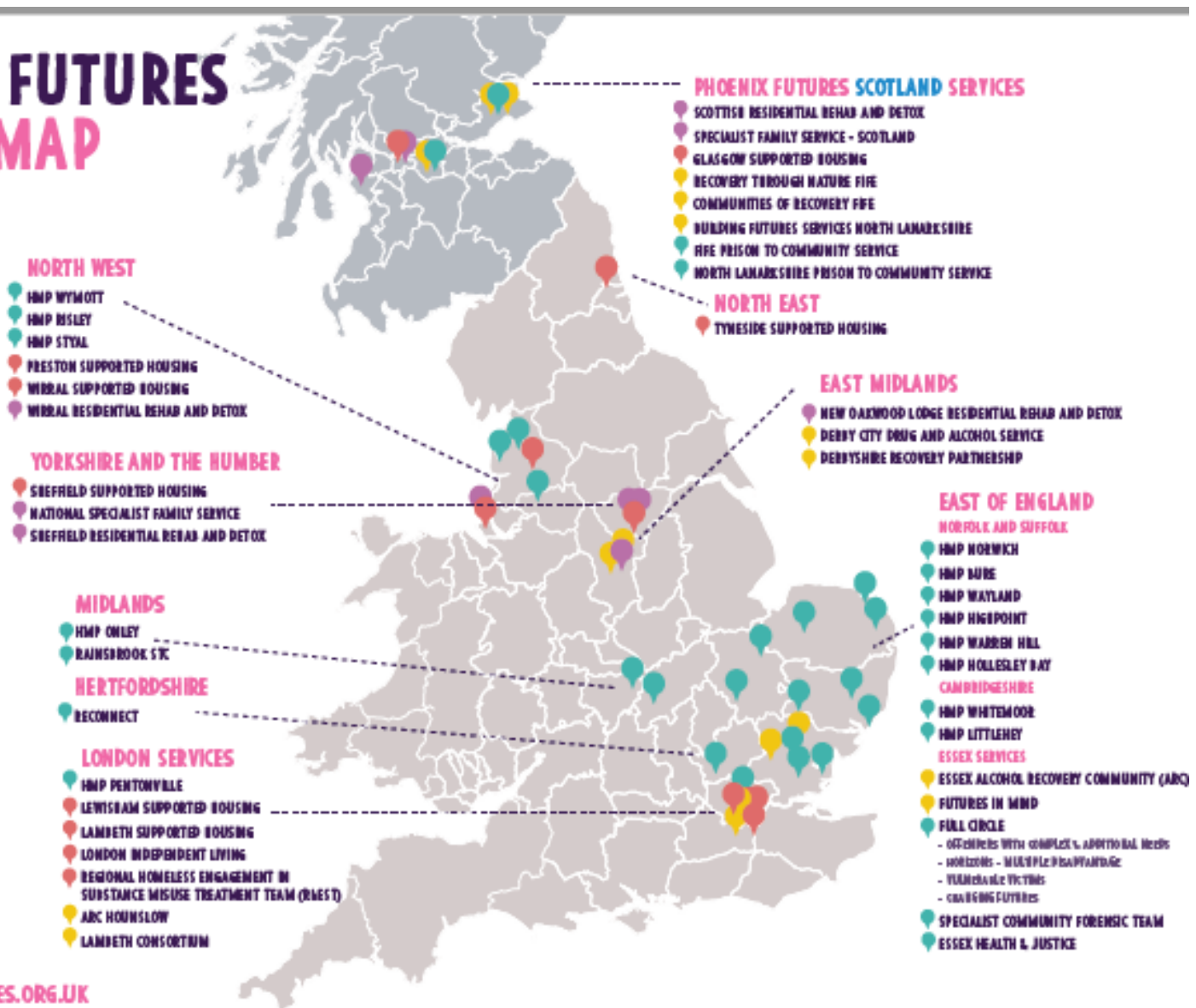
PHOENIX FUTURES SERVICE MAP

MAP KEY

-  CRIMINAL JUSTICE SERVICES
-  COMMUNITY SERVICES
-  HOUSING AND HOMELESSNESS SERVICES
-  RESIDENTIAL REHAB AND DETOX SERVICES



WWW.PHOENIX-FUTURES.ORG.UK



Pan-London programme



Guy's and St Thomas'
NHS Foundation Trust



MILDMAY
Transforming Lives

PHOENIX
FUTURES

www.healthylondon.org

RhEST



Assertively engage with individuals through outreach and in-reach



Deliver focused, time-limited interventions that improve access to services



Assess barriers to drug and alcohol treatment for each individual



Collaborate with a range of agencies to improve outcomes

The story so far



- 40+ services
- 21 referrals
- 16 alcohol primary substance
- 12 active clients
- 4 in D&A services
- 2 mobile phones
- 1 pair of shoes

Learning



- Handful of agencies making referrals
- 100% of referrals have been male
- 3 cohorts so far:
 - Visiting/sleeping in central London, no local connection
 - Housed in central London, local connection elsewhere
 - About to move to another area
- Flexibility is key to success
- But money helps

Case study

- 60 yr-old male drinking problematically 20+ years
- Liver cirrhosis
- Punjabi speaker
- Varying accounts of alcohol consumption
- Struggles to attend appointments
- Partnership working key to progress



Case study



- 46-yr old Polish national
- Housed in temporary accommodation
- Previous detox referral rejected
- Various physical health problems
- No history of engagement with agencies

In conclusion



vicky.ball@phoenixfutures.org.uk

www.phoenix-futures.org.uk



PHOENIX
FUTURES