

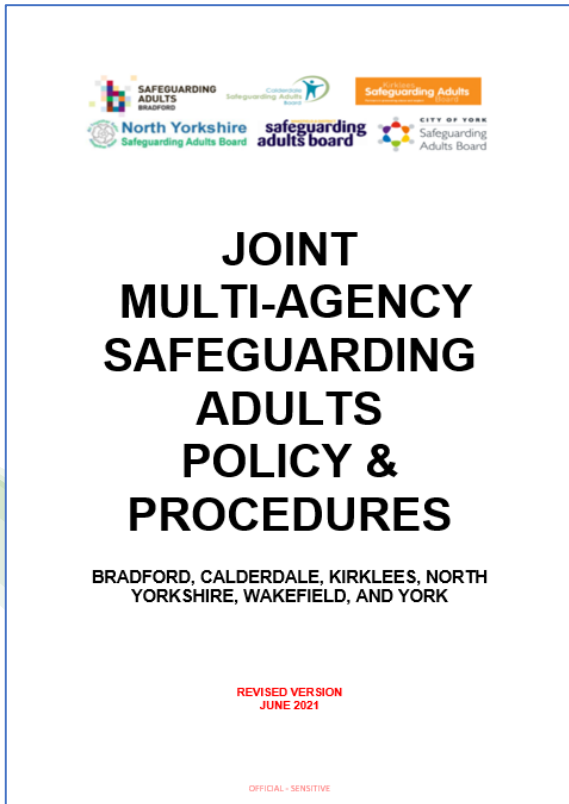
# Building Strong Partnerships to Create Successful Multi-Agency Safeguarding Policies

Safeguarding adults requires organisations to work closely together, in partnership, to support and safeguard adults at risk of abuse and neglect. Strong partnerships are those whose work is based on an agreed policy with common definitions and a good understanding of partners' roles and responsibilities.

Safeguarding adults is however far more than a set of guidance or procedures; it is all we do in all our work, in our practice, and our communities to prevent abuse and promote the wellbeing of adults with care and support needs. It includes the preventative work of our care and health services, the support of our neighbourhoods and communities, the courage of everyone who has 'blown the whistle', and the actions of every individual who looks out for the welfare of their friends and neighbours.

# Building Strong Partnerships to Create Successful Multi-Agency Safeguarding Policies

Using multi-agency ownership to improve adult safeguarding practices

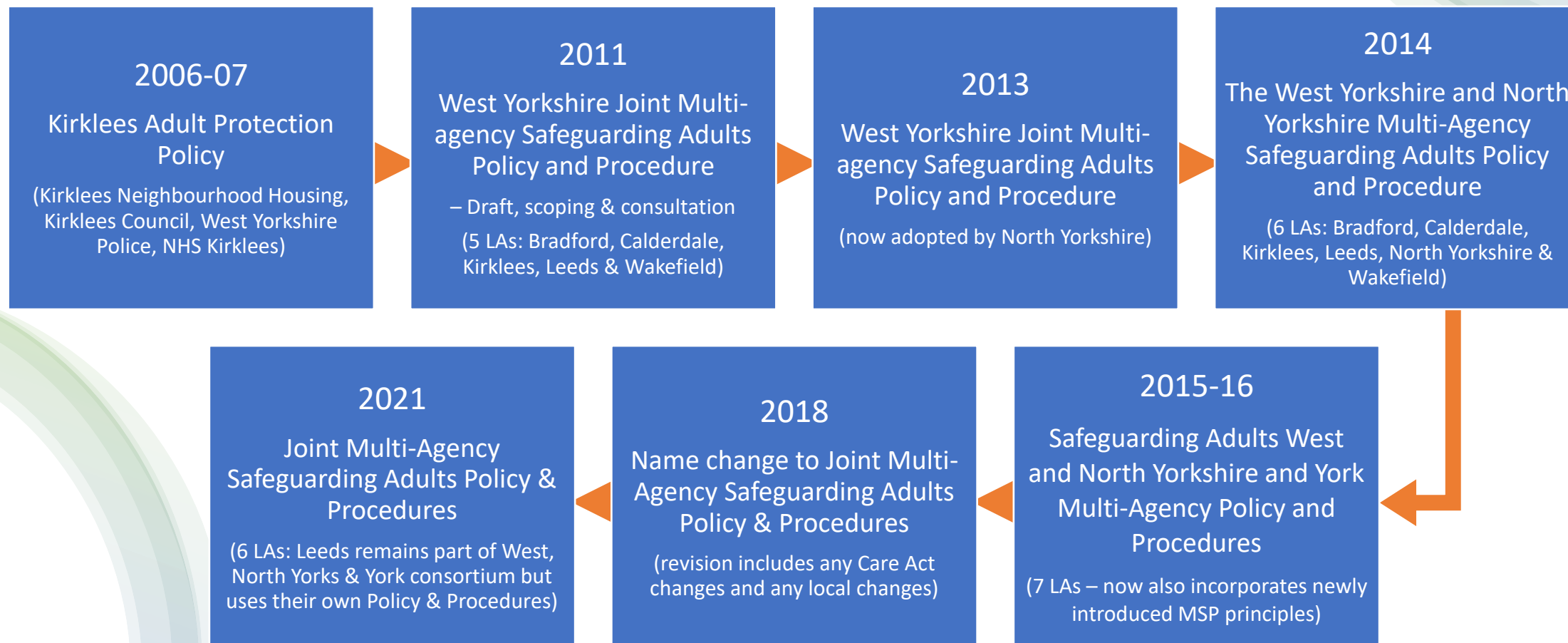


Safeguarding means protecting an adult's right to live in safety, free from abuse and neglect. It is about working together to support adults to make decisions about the risks they face in their own lives, and protecting those who lack the mental capacity to make these decisions.

The Joint Multi-Agency Safeguarding Adults Policy and Procedures are underpinned by a commitment to being person led and outcome focused, upholding the principles of Making Safeguarding Personal, including sharing learning, expertise, and to develop best practice across a wider region to the benefit of adults at risk of abuse and neglect.

# Building Strong Partnerships to Create Successful Multi-Agency Safeguarding Policies

## The Journey – A Historical Timeline



# Building Strong Partnerships to Create Successful Multi-Agency Safeguarding Policies

## The Beginnings

2011 The five West Yorkshire Local Authorities, Bradford, Calderdale, Kirklees, Leeds, Wakefield met to discuss the development of joint adult safeguarding policies and procedures in direct response to requests from partner agencies working across local authority boundaries, including the police and NHS. All members of the group agreed joint policies and procedures were needed because they would:

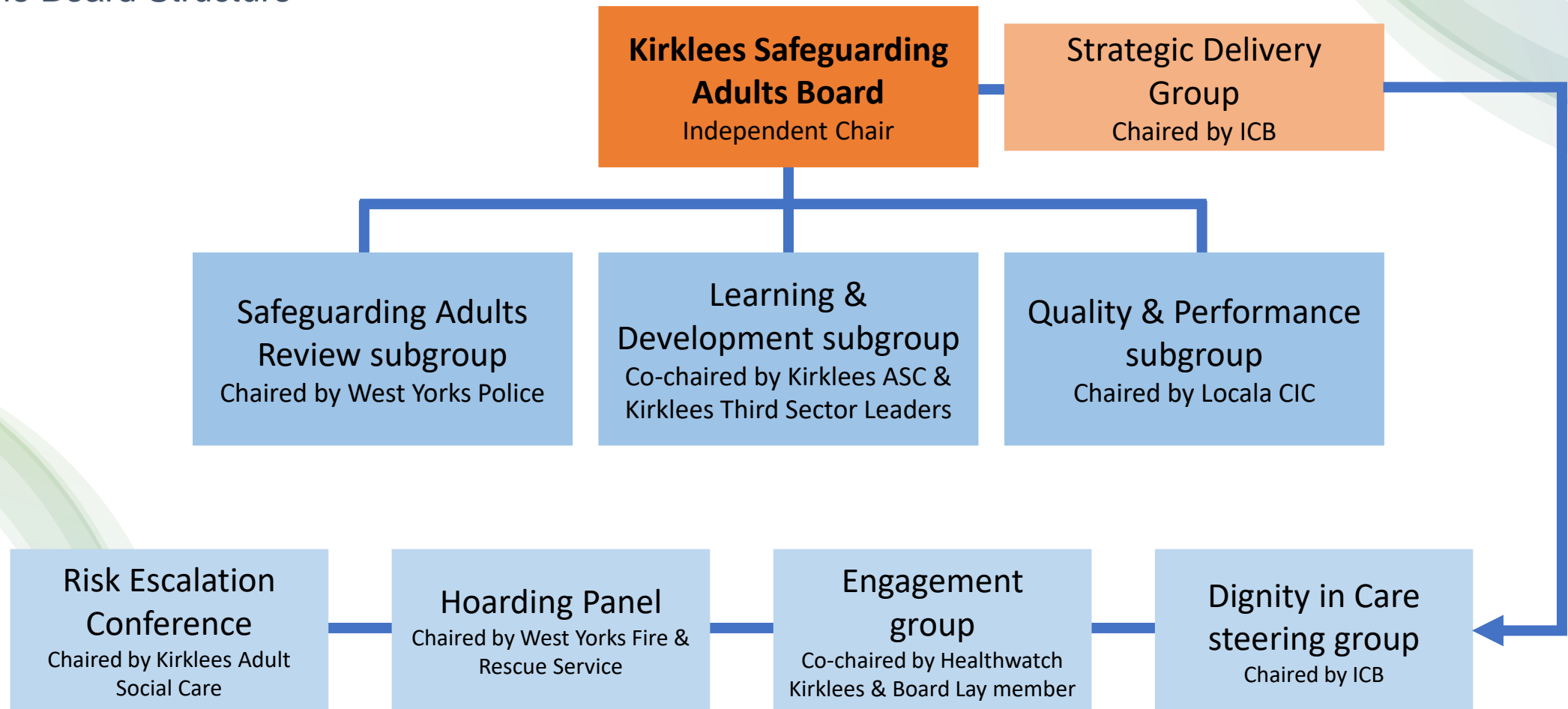
- Improve consistency in safeguarding practice across West Yorkshire.
- Benefit joint work with partners, particularly those that work across the whole West Yorkshire area such as police, probation, fire and ambulance services.
- Provide a stepping-stone to national consistency.
- Anticipate other national developments, including for example, recommendations from the Law Commission and the government's response at that time to these.
- Enable staff to work across areas and share joint training, and perhaps support other future staff flexibilities.

The first draft was available and published in 2013.

# Building Strong Partnerships to Create Successful Multi-Agency Safeguarding Policies

Taking a broad view about who the right partners are to achieve excellence in multi-agency partnerships

## The Board Structure



# Building Strong Partnerships to Create Successful Multi-Agency Safeguarding Policies

Actively seeking ongoing learning and improvement: “Pinch with Pride”

## Nationally

- Network of Safeguarding Adults Board Chairs and National SAB Managers network

## Locally

- Legal Briefings standing agenda item at Board meetings
- Crossover of partner agency membership across boundary Board subgroups
- Cross pollination of membership at:
  - Kirklees Safeguarding Children Partnership
  - Kirklees Health & Wellbeing Board
  - Kirklees Community Safety Partnerships
  - Kirklees Safeguarding Adults Board Strategic Delivery group
  - Interboard meetings – specifically designed to jointly consider linked agendas
- West Yorkshire Safeguarding Week

# Building Strong Partnerships to Create Successful Multi-Agency Safeguarding Policies

## Taking a values driven approach to adult safeguarding

- The Board has moved away from the dependence of performance data driving the work of the Board toward an intelligence led approach.
- Safeguarding Adults Collection (SAC) remain
- Partner Agency Highlight report
- Board Stories – setting the scene
- Making Safeguarding Personal
- Multi-agency forums
- Interboard work sharing learning from SARs, DHRs and CSPRs

# Building Strong Partnerships to Create Successful Multi-Agency Safeguarding Policies

What difference are we making?

Placing the person at the centre of any and all strategic planning is paramount to the effectiveness of solutions offered

Encompassing and embracing a whole family approach, which is intergenerational, community based, with friends and neighbours, parks, tradespersons, etc being a part of the ripples outwards.

