

NRPF, Refugee and Migrant Service  
Islington Case Example:  
Disrupting destitution and achieving  
integration

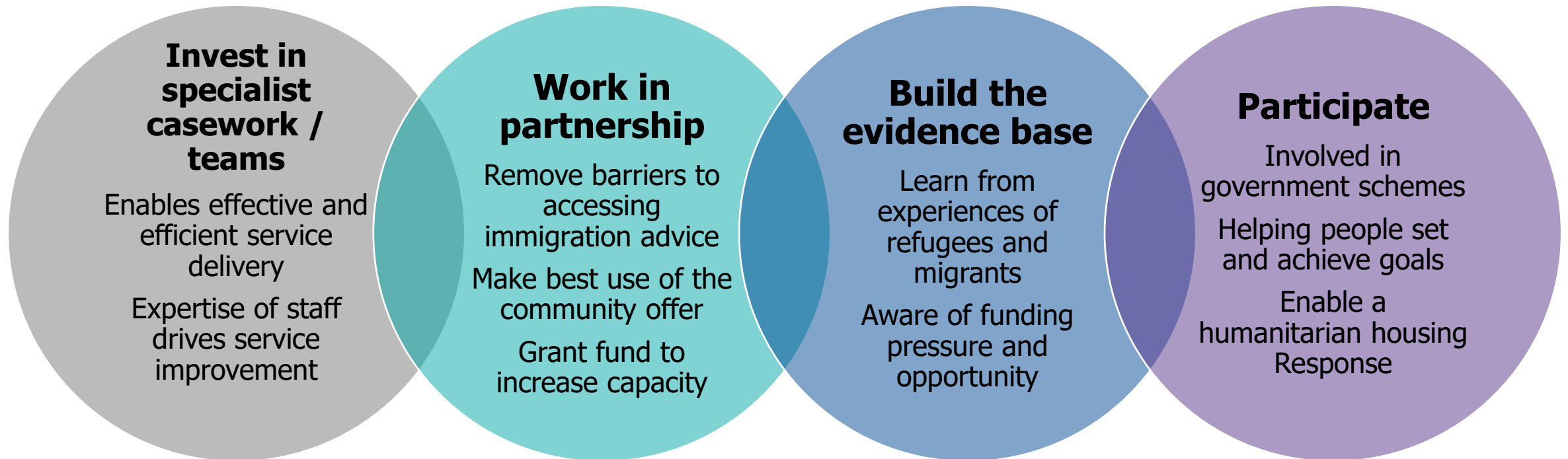
31 January 2023

# NRPF Refugee and Migrant Service, timelines and key groups

Start date (Islington)	Support provided	Statutory provision?	Gov. Funded?	Access to work / public funds?
Late 1990s / early 2000s	<b>Social services’ ‘safety net’ support</b> to prevent families and adults with care & support needs being destitute	<b>Yes</b> Children Act 1989 Care Act 2014	<b>No</b>	<b>No</b>
December 2015	<b>Syrian Resettlement</b>	<b>No</b>	<b>Yes</b>	<b>Yes</b>
March 2020	Humanitarian housing response to protect lives, covid-19 pandemic – <b>‘everyone in’</b>	<b>Discretionary powers only</b>	<b>Limited</b>	<b>No</b>
September 2021	<b>Afghan resettlement</b> and evacuation from Kabul including Bridging Hotel	<b>No</b>	<b>Yes</b>	<b>Yes</b>
October 2021	Large scale <b>asylum contingency accommodation</b> for single adults	<b>Yes – for the Home Office, IAA 1999</b>	<b>No</b>	<b>No</b>
March 2022	<b>Homes for Ukraine</b> and sponsor / family route	<b>No – and scale driven by resident participation</b>	<b>Yes</b> Sponsor route only	<b>Yes</b>

# The Islington Model

**Islington will be a place of welcome and safety for all. We are proud to have a dedicated team to prevent destitution, alleviate poverty and promote integration.**



# Asylum Contingency Hotels - Islington's successes

760 single adult asylum seekers are accommodated by the Home Office in two hotels, the average length of stay in these hotels is now 250 days. Islington Council has achieved the following:

Engaging with Home Office contractors to improve their reporting of potential under-age asylum seekers

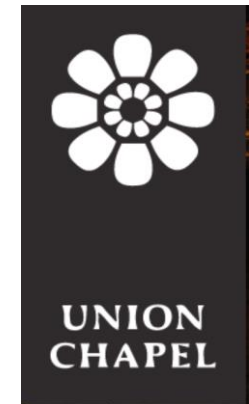
Connecting Home Office contractors & voluntary organisations to improve advertising of welfare services in the hotels

Working in partnership with Better Leisure & Arsenal in the Community to deliver weekly football coaching at Finsbury Leisure Centre



Commissioning local charity Union Chapel to provide wraparound welfare support and ESOL at the hotels

Free tickets given out to asylum seekers. 30 for Arsenal games, 60 for plays and 100 for a concert



# Homes for Ukraine Response, March 2022 to present



392 refugees arrived

251 hosting arrangements commenced

160 hosting arrangements remain active (for 250 people, including 60 children)

Welfare checks completed, including DBS, visits, phone calls and group sessions

Online info on for hosts & guests maintained

Commissioned Health Prom to deliver wraparound support and social activities

18 households 'rematched'  
Rent / deposit offer to help move to private sector accomm.

Specialist services for advice on benefits, employment, housing and for the provision of ESOL

Christmas and Ukraine Independence Day events

Safeguards protect against criminal activity, exploitation and abuse – but the experience of working with Islington residents has been one of generosity and solidarity

**HOLD** for hosts

**beam**

**HealthProm**  
Ensuring vulnerable children have the best start in life

 **ISLINGTON**  
For a more equal future

# Afghan Resettlement in Islington, from August 2021 to present

Bridging Hotel, Sept. 2021-22, 19 families, of which 12 settled in Islington.

28 families / 146 people now resettled in Islington and a further 7 families to be accommodated by March 2023 – **highest number across London Boroughs**

Combining resettlement practice with the Housing Department's 'buy-back scheme' enabled 10 X 3 beds and 10 X 4 properties to be purchased

Group sessions on UC, Cost of Living, Budgeting, Women's Health, parenting

Community engagement delivered by KMEWO . Adult Community Learning operating bespoke ESOL with childcare provision.

Psychosocial support for adults set-up with Traumatic Stress Clinic

Major community events run, including for Nowruz (New Year)

15 people in full and part-time employment

5 people passed driving theory test, 1 obtained driving licence

# No Recourse to Public Funds and the NRPF Network

## NRPF service provision in Islington

- Essential 'safety net' support being provided to 42 households with NRPF under social services' legislation at a annual cost of £850,000 in accommodation and subsistence
- Since March 2020, approximately 112 people with No Recourse to Public Funds supported under the Rough Sleeping Pathway (15 households remaining)
- Rough sleeper count for Islington remains low but limited funding for rough sleeping interventions and continued use of NRPF policies risks a reversal of this trend

## NRPF Network guidance and support

- 81 local authorities subscribe to the NRPF Connect database to help manage NRPF caseloads, with the Home Office providing immigration information and escalating cases
- Working on behalf of councils to make [evidence based policy and funding recommendations](#) to government
- With an email membership of approximately 5,500 people and up-to-date guidance and information available at [www.nrpfnetwork.org.uk](http://www.nrpfnetwork.org.uk) statutory duties are made clear for local government partners

# Reflections on good practice in resettlement and integration

- Breaking language barriers - bespoke ESOL (with childcare) and digital inclusion
- Intensive employment support (job fairs, casework time, employment agencies)
- Empowering women and young adults to set and achieve their goals
- Being culturally and linguistically aware as supported by community based organisations and linguistic proficiency of staff
- Be agile in assigning new tasks amongst the team at times of high demand
- Be flexible around individual need and obtain feedback to improve practice
- Hold government to account for the funding and practice changes needed to deliver more equal support to all refugee and migrant groups



# Staying connected with the experience of people we support

**“I have to buy the cheap things like cheap stuff, the rice, that's all.”**

**“...if I see that the money's running out, I just reduce my feeding...”**

**“I need shoes, I haven't had new shoes for years...tomorrow I have to go to court and I'm going...in a pair of shoes that I found on the street and they're in a horrible condition”**

(interviews from 2020 – NRPF Team's review and increase of the subsistence policy for families and adults supported under social services' legislation)

Lessons: keep an open mind, keep asking questions and deliver the best possible services for all residents