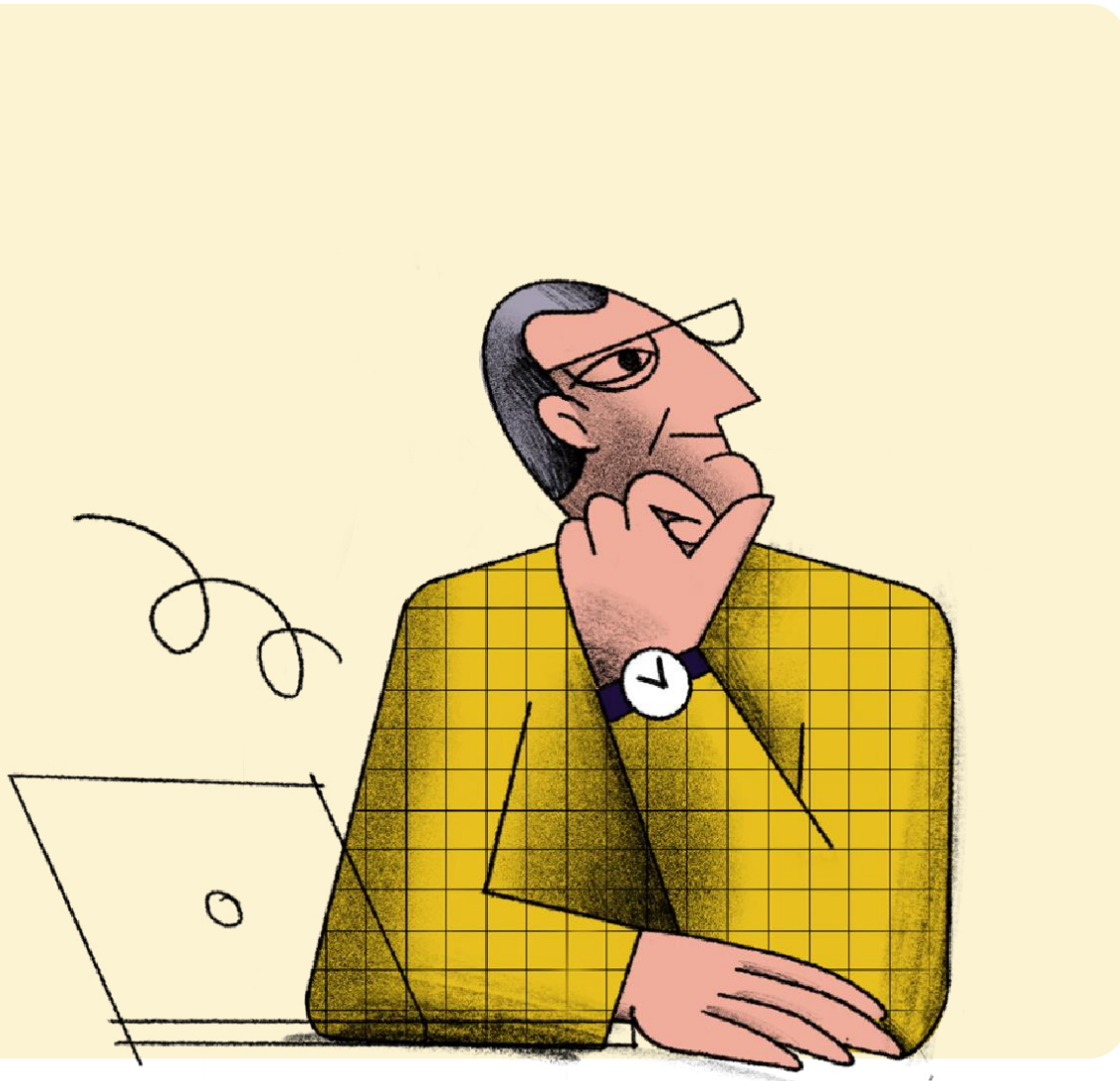


Safeguarding and Protecting Charities

Catherine Edginton Technical Advisor and Senior Safeguarding Lead , Charity Commission



CHARITY COMMISSION
FOR ENGLAND AND WALES

The charity sector regulated by us 2021-22 at a glance

Total charity income
we regulate

£83.8bn
charity income

£80.1bn
charity spend



Commission income



£30.55m

Applications to register
as a charity

8,005



Charities on the
register
169,029

5,252

Charities removed
from the register

Charities that operate
outside England and Wales



19,094

Total trustees



928,688
trustee positions

Contact centre



74,878
Calls answered

31,393

Number of individual
charities supported through
the contact centre



**CHARITY COMMISSION
FOR ENGLAND AND WALES**

Concerns facing charities



Financial and Income Stability

Regulation

Change & Technology

Safeguarding

Culture, Leadership & People



Overcoming concerns

- **Clear Vision**
- **Embrace change**
- **Governance and leadership**
- **Policies and practice**
- **Safeguarding**

Risk Assessment



Evaluate the risks



Decide on control measures



Record decisions and implement



Review



[Safer recruitment | NSPCC Learning](#)

[Criminal records checks for overseas applicants \(Gov.UK\)](#)

Advice for ensuring proper due safeguarding diligence when working with to external organisations



Know your principles

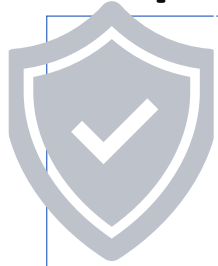
Guidance for charities operating internationally : supporting and protecting staff and beneficiaries overseas



“ As part of fulfilling your trustee duties, you must take reasonable steps to protect from harm people (all adults and children) who come into contact with your charity ”

The essential trustee: what you need to know, what you need to do

We expect all trustees to make sure their charity:



has appropriate safeguarding policies and procedures in place



checks that people are suitable to act in their roles



knows how to spot and handle safeguarding concerns in a full and open manner



has a clear system of referring or reporting to relevant agencies as soon as concerns are suspected or identified



sets out risks and how they will be managed in a risk register which is regularly reviewed



follows statutory guidance, good practice guidance and legislation relevant to their charity



does not ignore harm or downplays failures



has a balanced trustee board and does not let one trustee dominate its work – trustees should work together



make sure protecting people from harm is central to its culture




has enough resources, including trained staff/volunteers/trustees for safeguarding and protecting people




conducts periodic reviews of safeguarding policies, procedures and practice


SAFEGUARDING WHEN WORKING INTERNATIONALLY




We expect charities to endeavour to uphold the same practices and standards as in the UK




Charities should take reasonable steps to ensure that any partner they use upholds practices and standards to the fullest extent possible



Trustees should consider each set of circumstances in the environment that they take place



In circumstances where they deviate from normal best practice, trustees must be able to explain why taking the decision was a reasonable and justifiable course of action



In such circumstances trustees must consider and implement any additional steps required to ensure that safeguarding risks are removed or minimised.

[FCDO Due Diligence: Safeguarding for external partners - GOV.UK \(www.gov.uk\)](https://www.gov.uk/guidance/charities-how-to-manage-risks-when-working-internationally)

<https://www.gov.uk/guidance/charities-how-to-manage-risks-when-working-internationally>

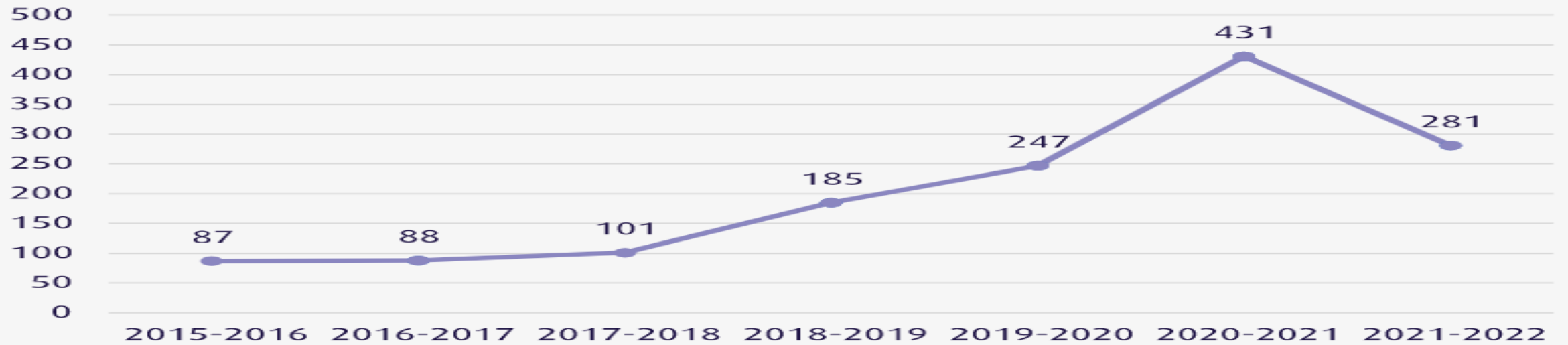


whistleblowing

<https://www.gov.uk/guidance/report-serious-wrongdoing-at-a-charity-as-a-worker-or-volunteer>

whistleblowing@charitycommission.gov.uk

What gets reported



Who reports what

Source of Disclosure	Number
Employee	80
Ex-Employee	67
Trustee	42
Volunteer	34
Ex-Trustee	19
Ex-Volunteer	14
Member	7
Anonymous	6

Type of Issue	2016-17	2017-18	2018-19	2019-20	2020-21	2021-22
Governance Failures	57	60	72	109	141	112
Safeguarding and Protecting People	15	24	89	72	122	90
Financial Harms	11	8	18	46	121	50



Useful Links

- Read [NCVO's safeguarding resource](#) for advice on how to get started with safeguarding.
- Read the [Charity Governance Code](#) for best practice advice including on safeguarding
- Read [Bond's 'Good governance for safeguarding'](#) for support on developing good practice on governance.
- [If you work with children or adults at risk](#) there are more safeguarding legal requirements. You must check whether these requirements apply to your charity. If they do, you must work within them.
- [FCDO Due Diligence: Safeguarding for external partners - GOV.UK \(www.gov.uk\)](#)
- <https://www.gov.uk/guidance/charities-how-to-manage-risks-when-working-internationally>
- [Criminal records checks for overseas applicants](#) (Gov.uk)
- [Safer recruitment | NSPCC Learning](#)

Thank
you

