

# Keeping Newham Adults Safe:

What is the understanding of residents

# What do we want to achieve?

Increase understanding about safeguarding and knowledge about the SAB

Reframe the local narrative on safeguarding to 'Keeping All Adults safe'

Encourage Newham's diverse communities to confidently raise safeguarding concerns in respect of adults with care and support needs to the MASH.

Establish a feedback process between the MASH and local residents when safeguarding concerns do not reach S42 thresholds

Create a culture of community understanding about safeguarding

Establish an 'Expert by Experience' Group of Newham residents to support and guide the SAB

# How are we going to do this?

**Initial engagement programme** consisting of focus groups, face-to-face conversations

**Establish and undertake a mystery shopping exercise** to understand the resident experience of reporting safeguarding concerns

**Establish a social media campaign** to raise awareness about safeguarding

**Deliver a community safeguarding training programme** for Newham's VCO

**Community consultation** with residents from Newham's Black and minoritized communities to share their experiences of engaging with Adult Social Care, Police and Health in relation to safeguarding

**Review the SARS** involving the deaths of vulnerable adults from Black and Minoritized communities

**Showcase project** as part of National Safeguarding Adult Week

**Develop a case** for future joined-up delivery and funding, creating efficiencies and clearer pathways to care in the future.

**Increase understanding of how citizens can keep each other safe**

**Increase confidence in adult social care and health practice**

**Increase understanding of the protocols and processes relating to safeguarding**

**Increase profile and understanding of NSAB**

**provoke professional curiosity** from colleagues involved in SARs

**Increase confidence in speaking about the equality impact on SAR**

# What are some of the activities we will undertake?

Establishing a baseline of understanding about Safeguarding

1

Raise the profile of safeguarding in local newsletters

4

Producing assets for communications and engagement campaign across Barnet

2

Attend community events

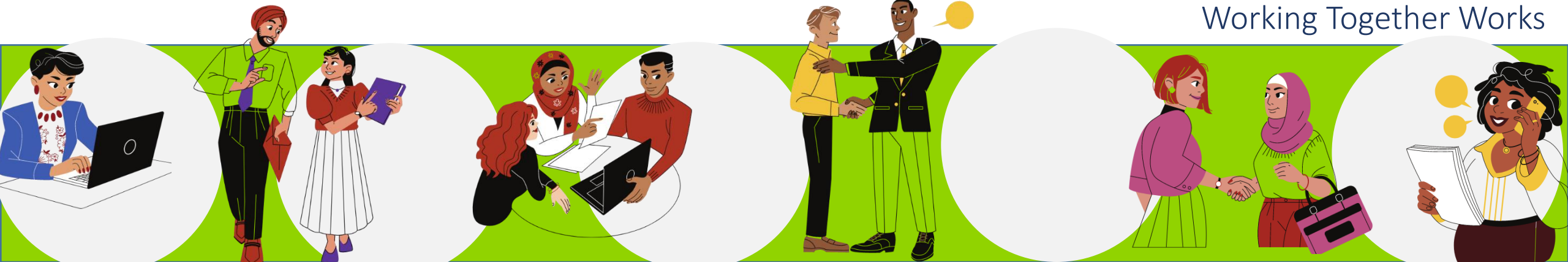
5

Running a social media campaign informing residents about safeguarding and the work of the SAB

3

Undertake proactive outreach into communities living with protected characteristics

6



# Reaching Out

In partnership with the Newham Safeguarding Adults Board, we launched a series of engagements with a diverse range of community groups and residents.

Using focus groups, one-one interviews and online surveys, we gathered feedback from participants on

- **what they think the concerns are**
- **what can be done to address the issues.**



Afro Caribbean  
Community



Carers  
Groups



Domestic Violence



Faith Communities



Mental  
Health

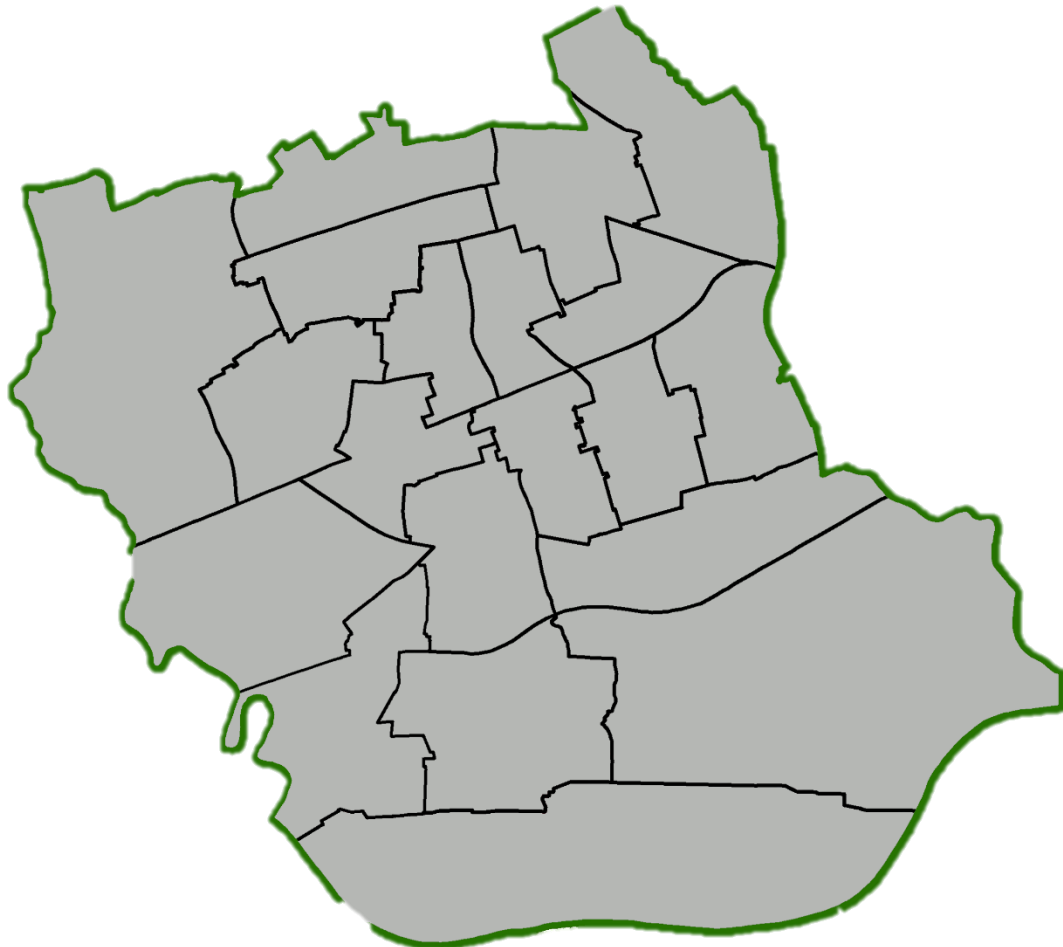


Older  
People



Romanian  
Community

# Our Engagement



We engaged with **43** organisations including:

- Carers First
- Health and Social Care Commissioning
- HealTogether CIC
- Newham African Caribbean Resource Centre
- Newham Muslim Forum
- Subco Trust

# Our Engagement:

5

Website updates  
Were made



421

Members  
received 35  
WhatsApp  
messages  
across 7  
groups



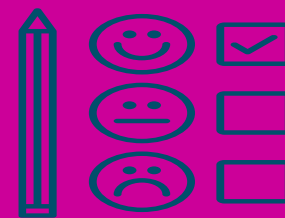
114

Face-to-face  
Engagements  
were held



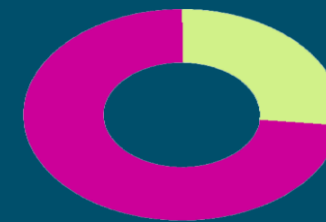
28

Survey  
responses  
were  
received



1864

Followers  
received  
20  
Social media  
updates



26

Healthwatch  
Newham  
volunteers  
shared the  
survey



# Findings

We found people with language, cultural and social barriers, older people or those with a physical or mental health conditions were:

- ❖ More likely to be unaware about safeguarding
- ❖ Less likely to identify a safeguarding concern
- ❖ Unaware of how to report the concern either about themselves or others

And people who are marginalised or isolated face a higher chance of being at risk.





# Our findings:

- Focus on raising awareness
- Understanding different communities require different approaches.

- what keeping safe means
- what are the areas of concern
- how to identify concerns
- How to raise concerns safely.

People told us that the most effective way to do this is via community groups, grassroot organisations, community and religious leaders etc.

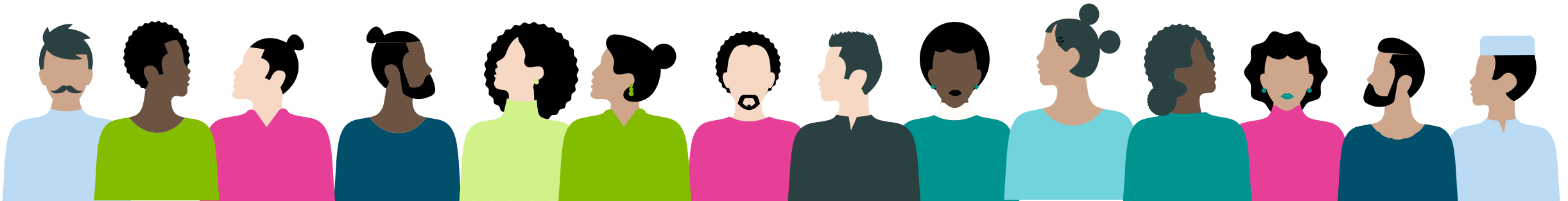
# Our Introduction to Safeguarding video



Available on our website

**The Community engagement sub group could take forward the following actions across the borough, with particular focus on residents we do not currently receive referrals from -**

- Raise awareness of what safeguarding means
- Raise awareness of how to report a safeguarding concern
- Raise awareness of what happens when a safeguarding referral is made
- Co-production of policies, procedures and delivery of training



# Summary of areas of work in adults and health

## Develop

1

- Developing systems to measure feedback to referrers
- Developing our local policies and procedures in relation to making safeguarding personal – co production with residents

(This financial year, when a resident was asked what they wanted to achieve, 94.6% of outcomes were partially or fully achieved)

## Review

2

- Deep dive into demographics of the residents who are the subject of safeguarding
- Referrals to understand where we need to raise awareness/ develop practice
- Review our response to concerns where they do not relate adults with care and support needs
- Reviewing our training on safeguarding adults
- Audit of safeguarding practice in the Local Authority to identify areas of good practice and areas for development

## Leading

3

Leading on community engagement sessions in safeguarding adults awareness week

Any Questions?

[Julie.pal@communitybarnet.org.uk](mailto:Julie.pal@communitybarnet.org.uk)