

Porchlight Strategy 2024–2029

Fighting for Lasting Change to End Homelessness

Agenda

Porchlight 

Who we are

The need for our work

Our context

Our approach

Who we are and what we do



Founded in 1974 Porchlight drew inspiration from the Simon Community's vision to provide a community-led alternative to the bleak night shelters and harsh institutional care prevalent at the time.

Today, we cover all of Kent and Medway and provide

- Community based mental health across Kent and Medway and family support in Thanet
- Rough Sleeper Outreach in Dartford, Dover, Folkestone, Sevenoaks, Tonbridge, Tunbridge Wells
- Supported housing in Canterbury, Thanet, Dover, Folkestone, Tonbridge, Tunbridge Wells
- Housing first and housing-led



We supported 5,794 people



This included 944 people who
were homeless



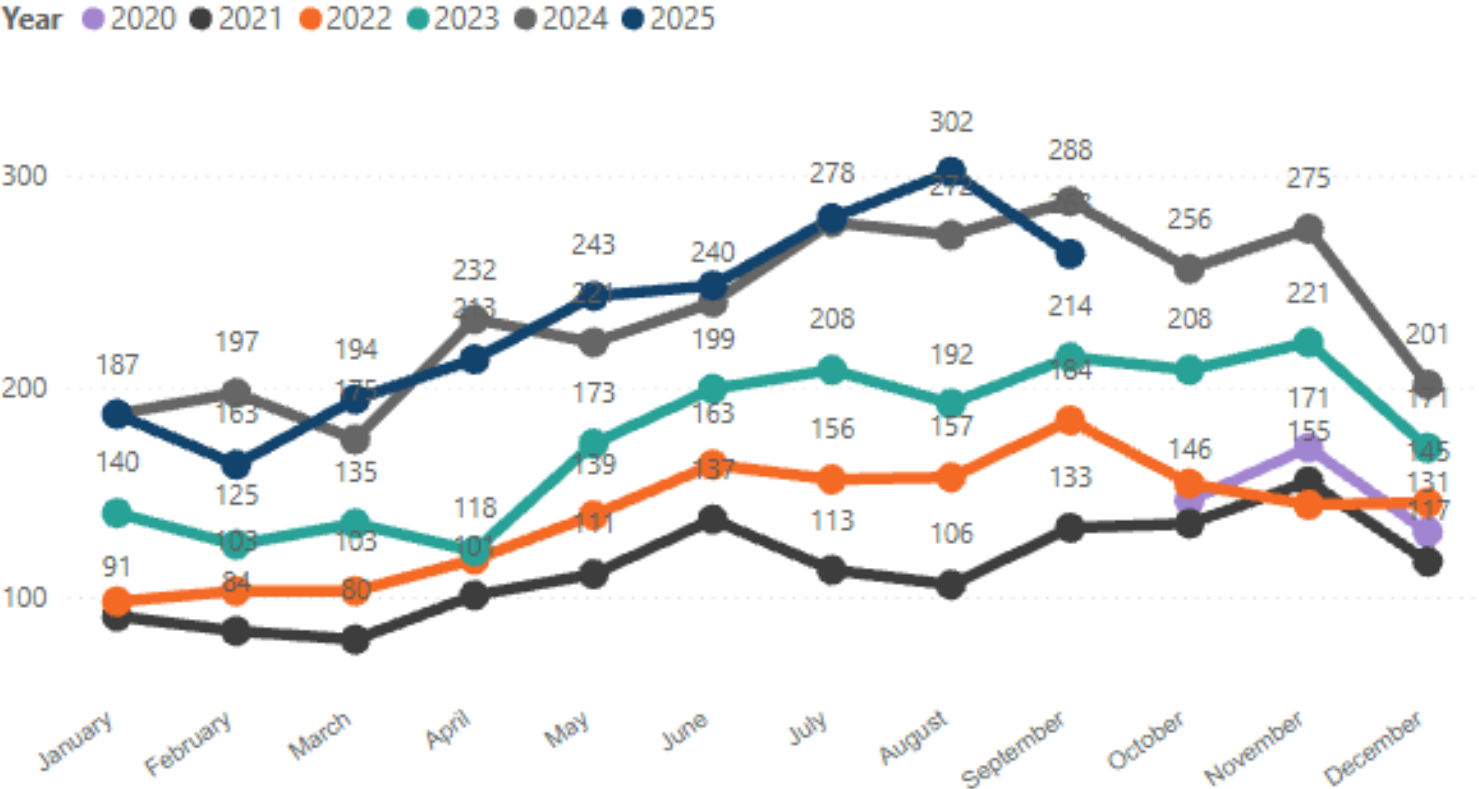
And 4,800 with their mental
health

The need for our work



Numbers

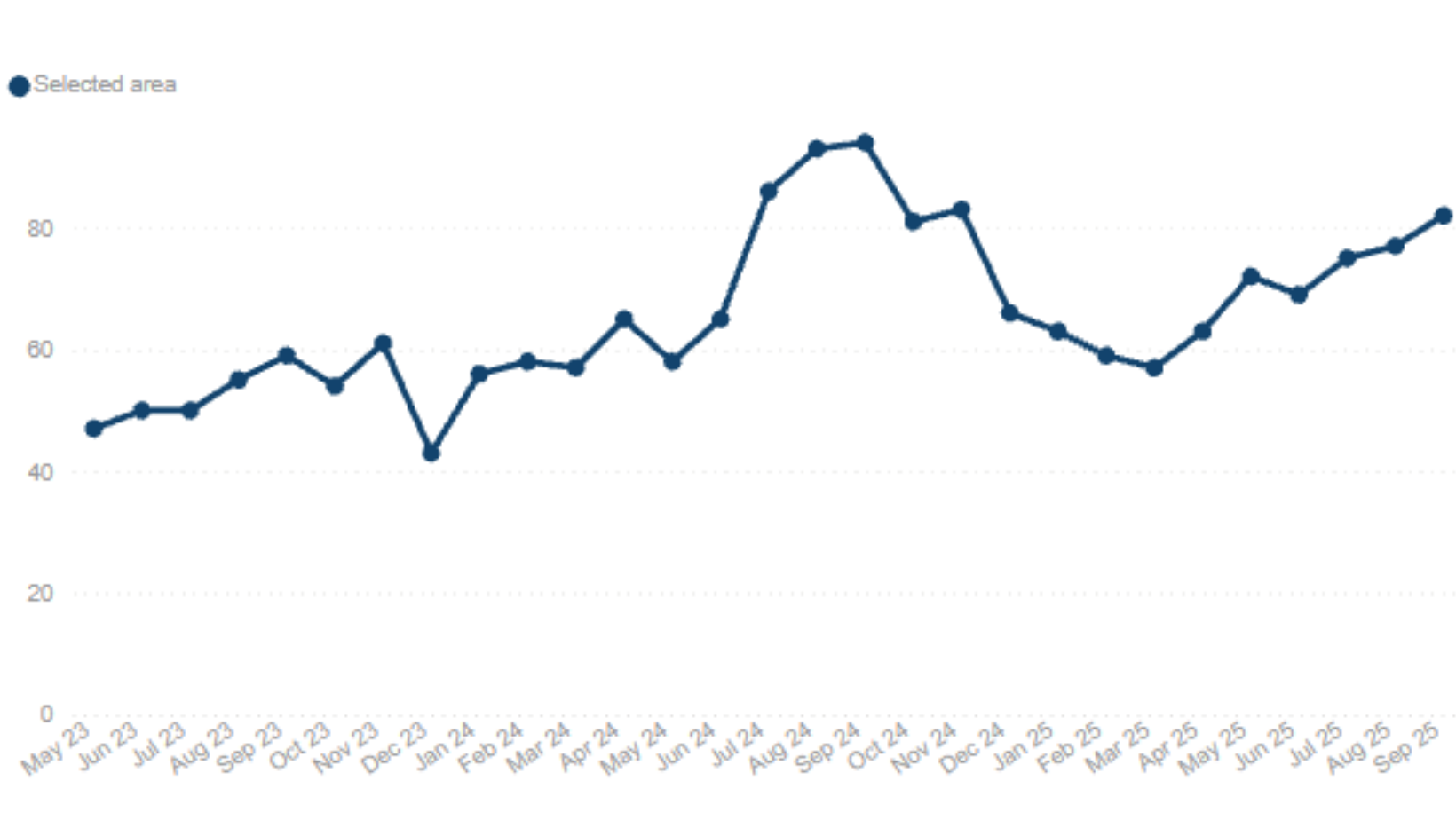
Number of people sleeping rough over the month, broken down by year



The need for our work



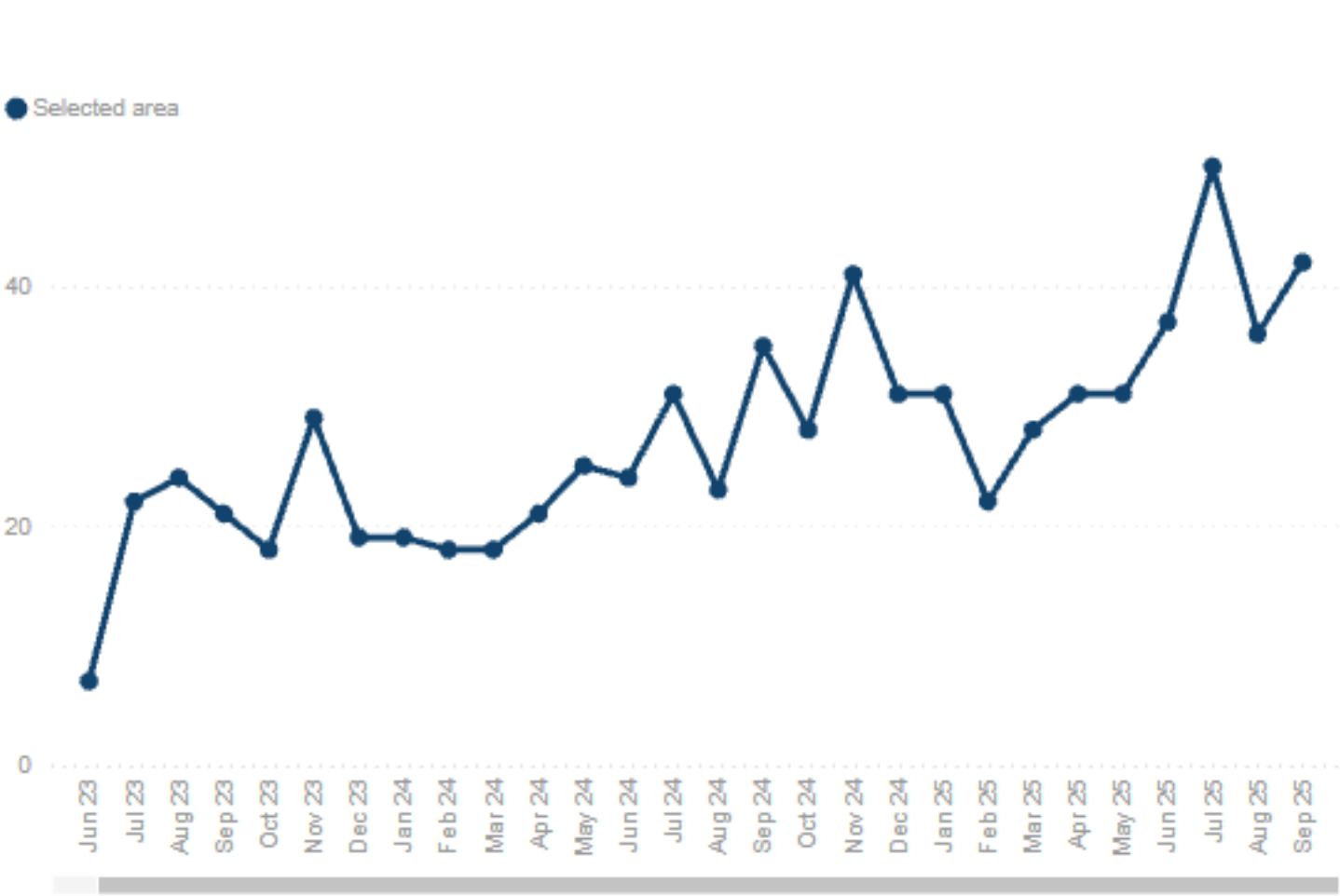
People estimated to be sleeping rough over the month who have been sleeping rough long term



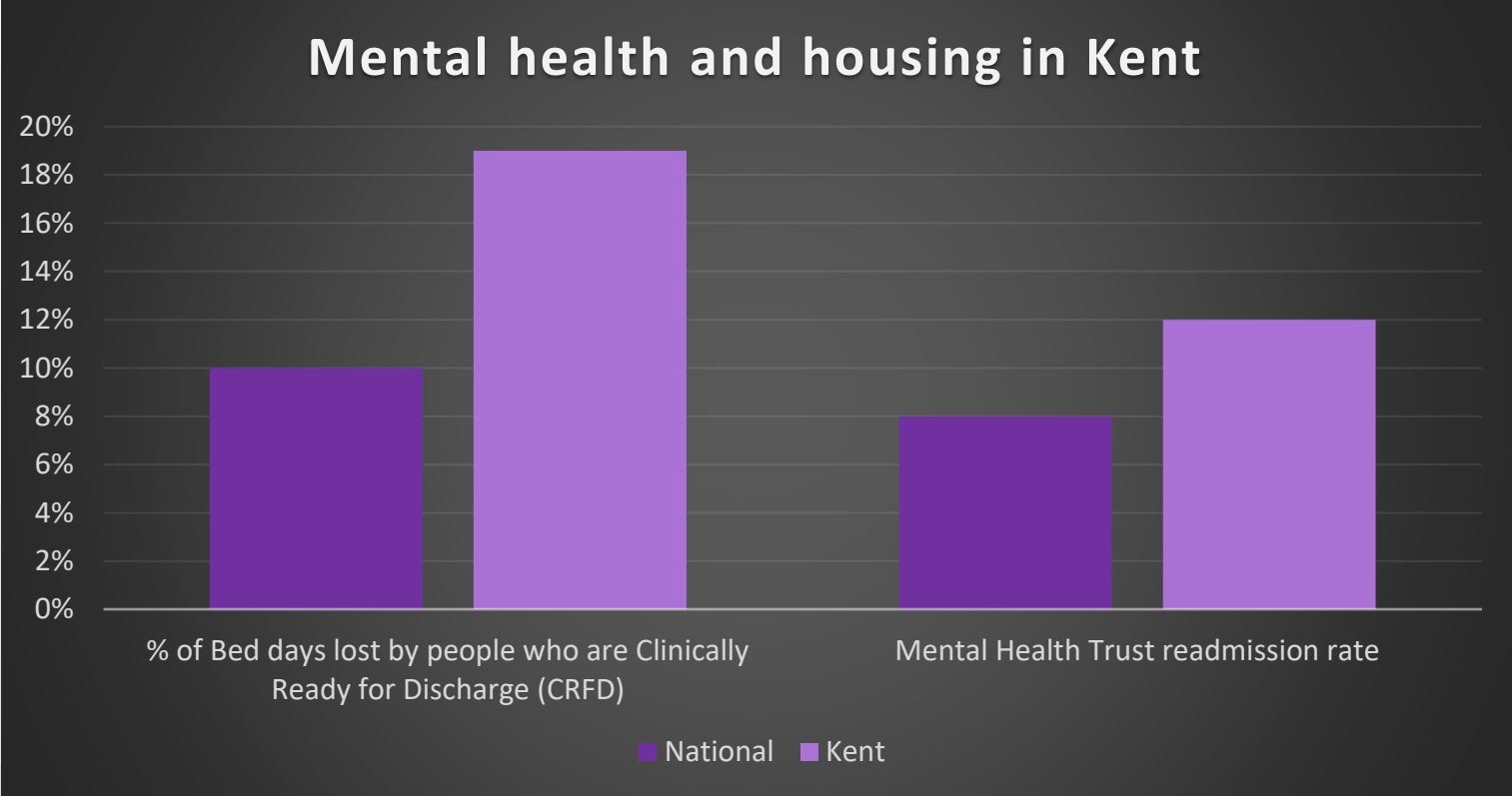
The need for our work



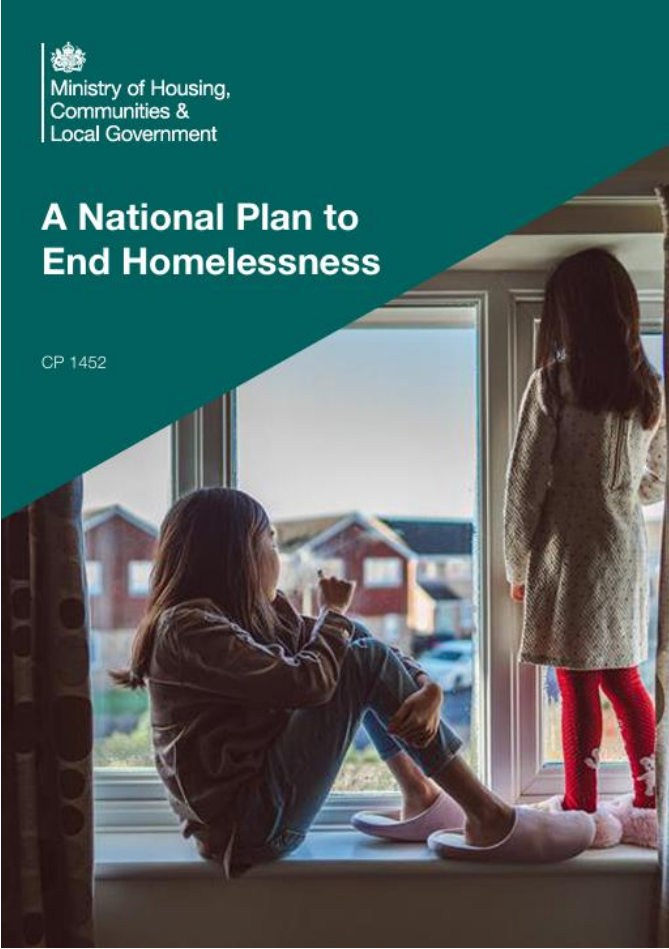
People estimated to be sleeping rough over the month who have returned to sleeping rough



The need for our work



New national plans



Local government reorganisation



Model 1
Three unitaries

- North Kent
- East Kent
- West Kent



NEWS

Home | InDepth | Israel-Gaza war | War in Ukraine | Climate | UK | World | Business | Politics | Culture

England | Local News | Kent

NHS board told to halve running costs



GOOGLE

Kent and Medway Integrated Care Board (ICB) has been ordered to cut its operational costs by 50%

Porchlight helps people find a safe home—and keep it



Concept	Meaning
Porchlight aims to be recognised as the leading charity in Kent	Having the highest standards of governance and compliance
	Being values-led
	Having volunteers at the centre of our work
	Being independent of the state
	Raising funds to support our activities
	Increasing our impact
	Being recognised for delivering high quality support
Providing homelessness, mental health and community support	Establishing an alliance with our clients
	Providing practical initial interventions
	Supporting clients to navigate the system
	Providing “trauma informed” support
	Involving clients in all aspects of their support
	Working with a wide range of partners
Empowering people to secure a safe home and sustain it long-term	Supporting clients to access safe, affordable accommodation
	Supporting clients to have a sense of purpose and belonging including meaningful day time activities and supportive social networks

UNIVERSAL PREVENTION

Act early to stop homelessness before it starts

Family Routes supports universal prevention by providing early, community-based help for families to improve wellbeing, strengthen relationships, and address issues to give young people at risk the best opportunities.



**A safe home,
better life and
fairer future
for everyone.**

TARGETED / EARLY HELP

Supporting people showing early signs of risk

Our Live Well Kent and Medway, Food Bank partnerships, Tenancy Sustainment and Mental Health Together services provide targeted, early help for people beginning to experience financial strain, poor wellbeing or housing difficulties. By intervening early, these services prevent issues from escalating into crisis, helping people to stay well, connected, and securely housed.

CRISIS & RECOVERY

Prevent repeat homelessness and support long term recovery

Our Supported Accommodation, Housing First, Hospital Discharge, Street Outreach and Move-On Support services form the crisis and recovery stage of prevention. They provide safe housing, intensive support, and coordinated recovery planning for people experiencing or exiting homelessness – reducing repeat rough sleeping, easing pressure on acute services, and helping individuals rebuild stability and independence.

PORCHLIGHT

OPEN DOOR

Your community hub

	Homelessness	Mental Health
Last 2 FY overall	43%	44%
24/25	44%	49%
23/24	40%	38%

Volunteering

Lived experience pathway

Lived experience volunteers occupy at least 10 different roles across the organisation (e.g., peer support, advocacy, service design input).

Corporate volunteer programme

Corporate volunteers will contribute a minimum of 2000 volunteers' hours per year

Volunteer led project

Delivered at least one pilot volunteer-led project – with evaluation of impact and feedback on process, any learning to take forward to future projects



Other

[Annie's story - finding hope after homelessness](#)

"Thank you! I can't believe it... I finally have my own flat and can adopt some cats."

01 December, 2025



Features

["It was daunting to be 65 years old and sleeping in a van"](#)

How Marcus and his dog Bramble were reunited for Christmas

01 December, 2025



Other

[Jodie's story - homeless with a child at Christmas](#)

"I just wanted to protect my daughter by giving her four walls of her own"

11 November, 2025

Discussion points

- What options are there for responding to a context of ambitious government plans implemented at the same time as extensive local government and NHS reorganisation
- What are promising approaches for reducing the rate of repeat homelessness
- Is there a need for a community-led alternative or compliment to statutory provision? If so, how do we create this alternative by working with our communities including donors, clients, volunteers and partners?

Porchlight 